

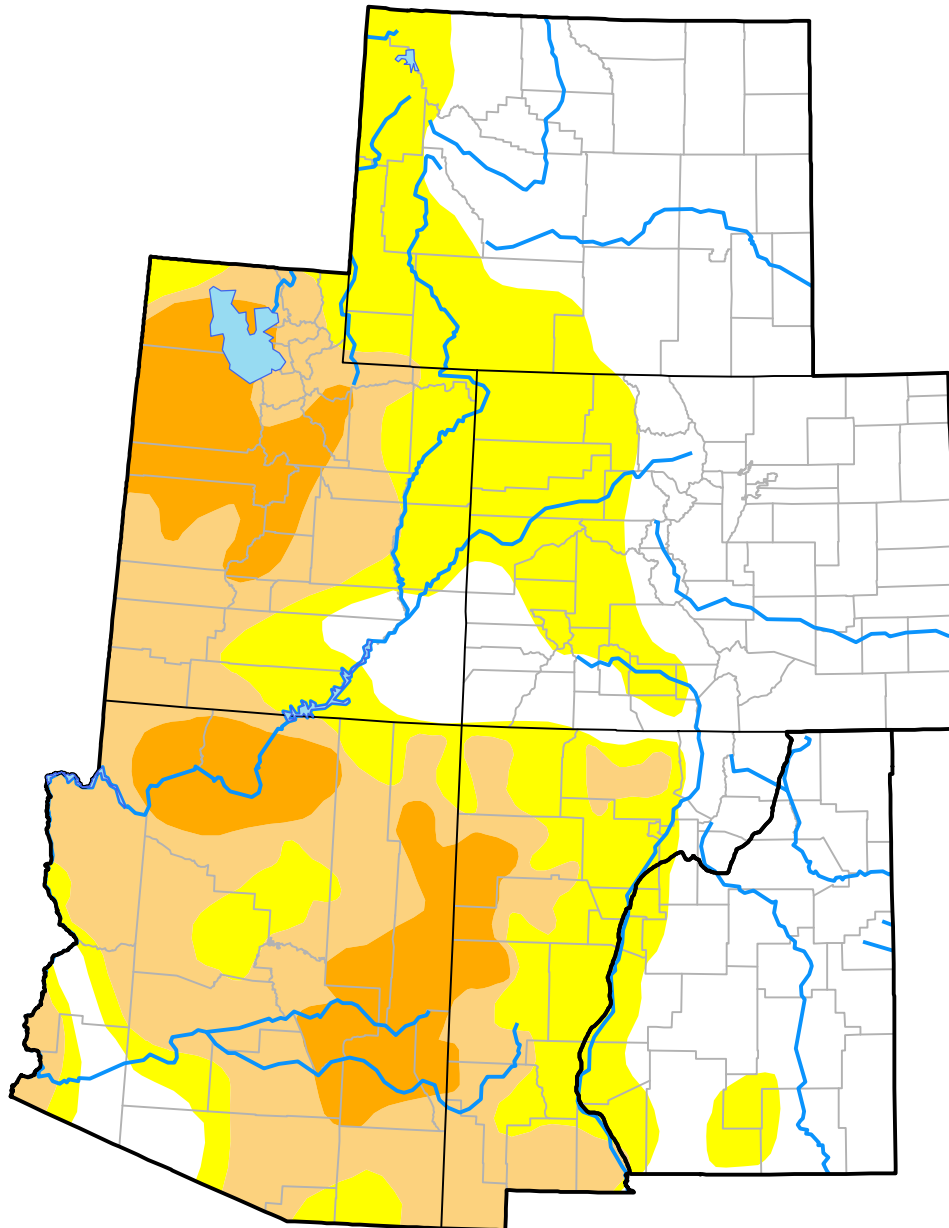
# U.S. Drought Monitor

## Intermountain West RDEWS

June 23, 2015

(Released Thursday, Jun. 25, 2015)

Valid 8 a.m. EDT



Drought Conditions (Percent Area)

	None	D0	D1	D2	D3	D4
<b>Current</b>	42.94	24.77	21.62	10.68	0.00	0.00
<b>Last Week</b> <i>06-18-2015</i>	42.94	21.79	23.95	11.31	0.00	0.00
<b>3 Months Ago</b> <i>03-26-2015</i>	26.00	14.23	39.08	18.97	1.73	0.00
<b>Start of Calendar Year</b> <i>12-31-2014</i>	38.06	14.78	28.13	17.34	1.70	0.00
<b>Start of Water Year</b> <i>10-02-2014</i>	38.96	13.81	27.10	16.97	3.16	0.00
<b>One Year Ago</b> <i>06-26-2014</i>	28.58	10.60	17.50	30.98	11.86	0.47

Intensity:

- None
- D0 Abnormally Dry
- D1 Moderate Drought
- D2 Severe Drought
- D3 Extreme Drought
- D4 Exceptional Drought

The Drought Monitor focuses on broad-scale conditions. Local conditions may vary. For more information on the Drought Monitor, go to <https://droughtmonitor.unl.edu/About.aspx>

Author:

Richard Tinker  
CPC/NOAA/NWS/NCEP



[droughtmonitor.unl.edu](https://droughtmonitor.unl.edu)