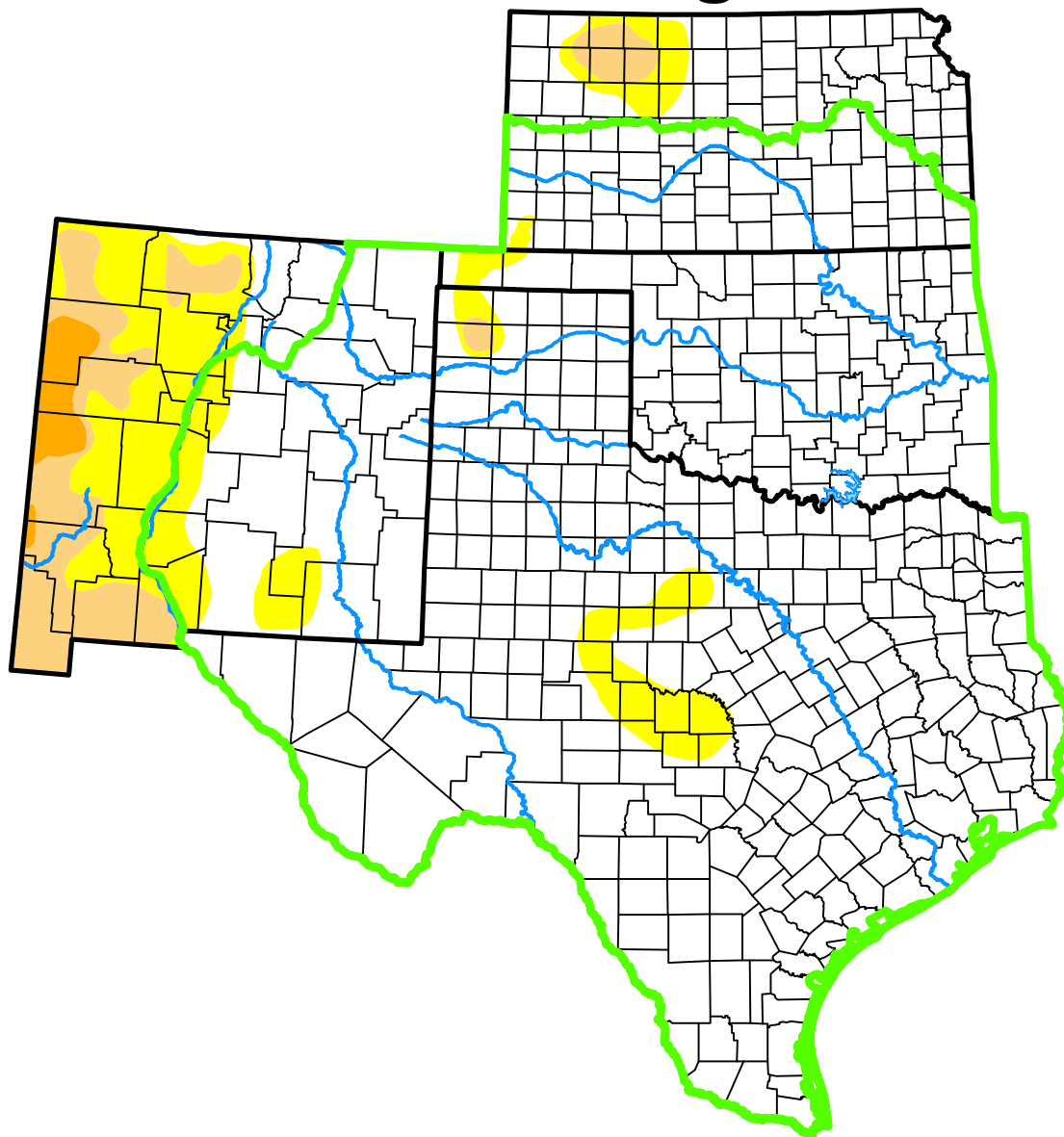


U.S. Drought Monitor

Southern Plains DEWS

and Surrounding Areas



June 30, 2015

(Released Thursday, Jul. 2, 2015)

Valid 8 a.m. EDT

Drought Conditions (Percent Area)

	None	D0	D1	D2	D3	D4
Current	94.28	5.55	0.16	0.00	0.00	0.00
Last Week <i>06-23-2015</i>	94.28	5.55	0.16	0.00	0.00	0.00
3 Months Ago <i>03-31-2015</i>	38.22	14.25	19.87	12.27	12.05	3.33
Start of Calendar Year <i>12-30-2014</i>	29.70	21.51	21.59	16.28	8.10	2.82
Start of Water Year <i>09-30-2014</i>	23.56	22.06	22.47	21.36	8.19	2.36
One Year Ago <i>07-01-2014</i>	8.62	19.47	20.61	28.86	18.41	4.04

(Statistics for area highlighted in green)

Intensity:

None	D2 Severe Drought
D0 Abnormally Dry	D3 Extreme Drought
D1 Moderate Drought	D4 Exceptional Drought

The Drought Monitor focuses on broad-scale conditions. Local conditions may vary. For more information on the Drought Monitor, go to <https://droughtmonitor.unl.edu/About.aspx>

Author:

Brian Fuchs
National Drought Mitigation Center



droughtmonitor.unl.edu