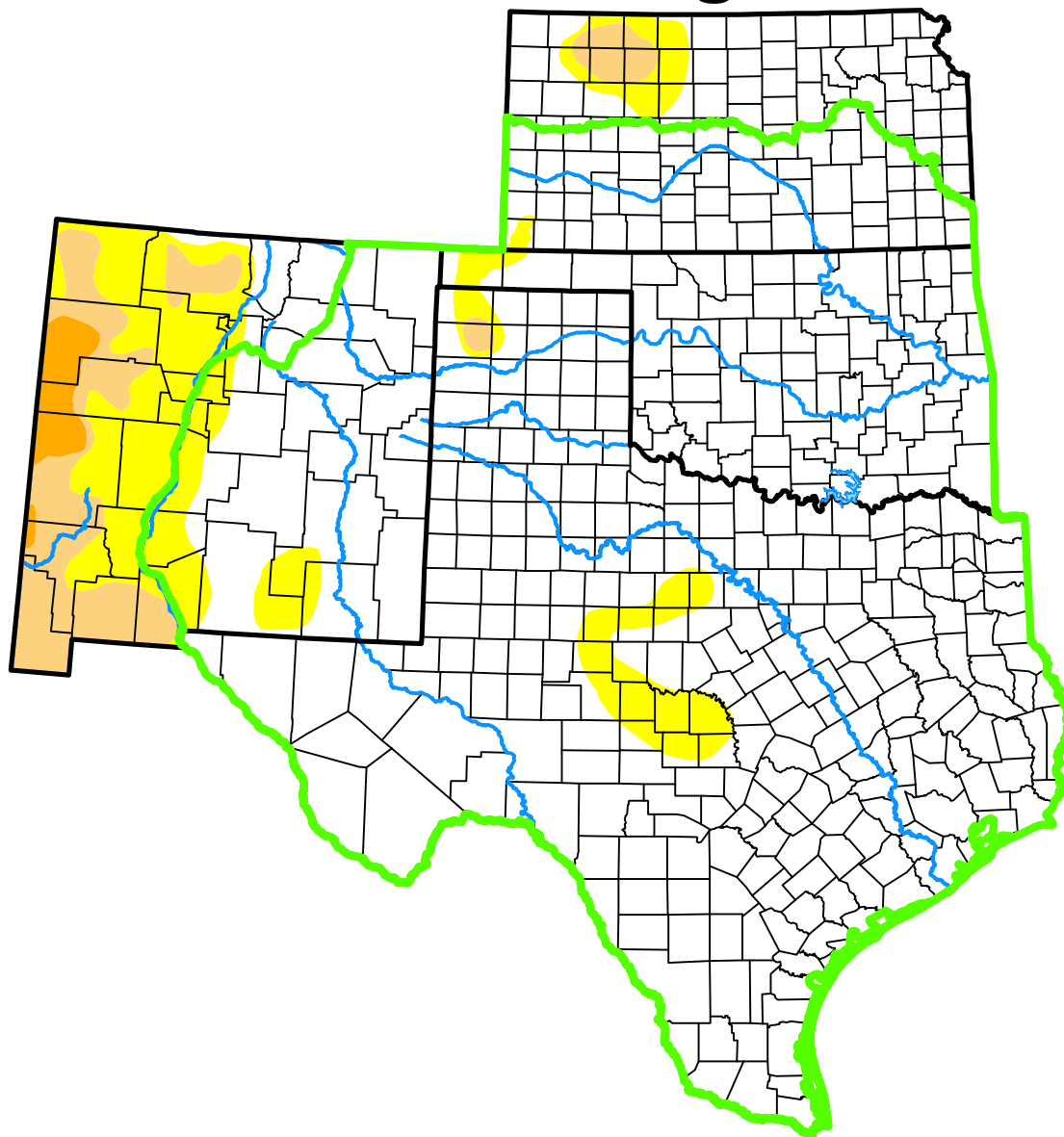


U.S. Drought Monitor

Southern Plains DEWS

and Surrounding Areas



June 30, 2015

(Released Thursday, Jul. 2, 2015)

Valid 8 a.m. EDT

Drought Conditions (Percent Area)

	None	D0-D4	D1-D4	D2-D4	D3-D4	D4
Current	94.28	5.72	0.16	0.00	0.00	0.00
Last Week 06-23-2015	94.28	5.72	0.16	0.00	0.00	0.00
3 Months Ago 03-31-2015	38.22	61.78	47.53	27.66	15.39	3.33
Start of Calendar Year 12-30-2014	29.70	70.30	48.79	27.20	10.92	2.82
Start of Water Year 09-30-2014	23.56	76.44	54.38	31.91	10.55	2.36
One Year Ago 07-01-2014	8.62	91.38	71.91	51.31	22.45	4.04

(Statistics for area highlighted in green)

Intensity:

None	D2 Severe Drought
D0 Abnormally Dry	D3 Extreme Drought
D1 Moderate Drought	D4 Exceptional Drought

The Drought Monitor focuses on broad-scale conditions. Local conditions may vary. For more information on the Drought Monitor, go to <https://droughtmonitor.unl.edu/About.aspx>

Author:

Brian Fuchs
National Drought Mitigation Center



droughtmonitor.unl.edu