

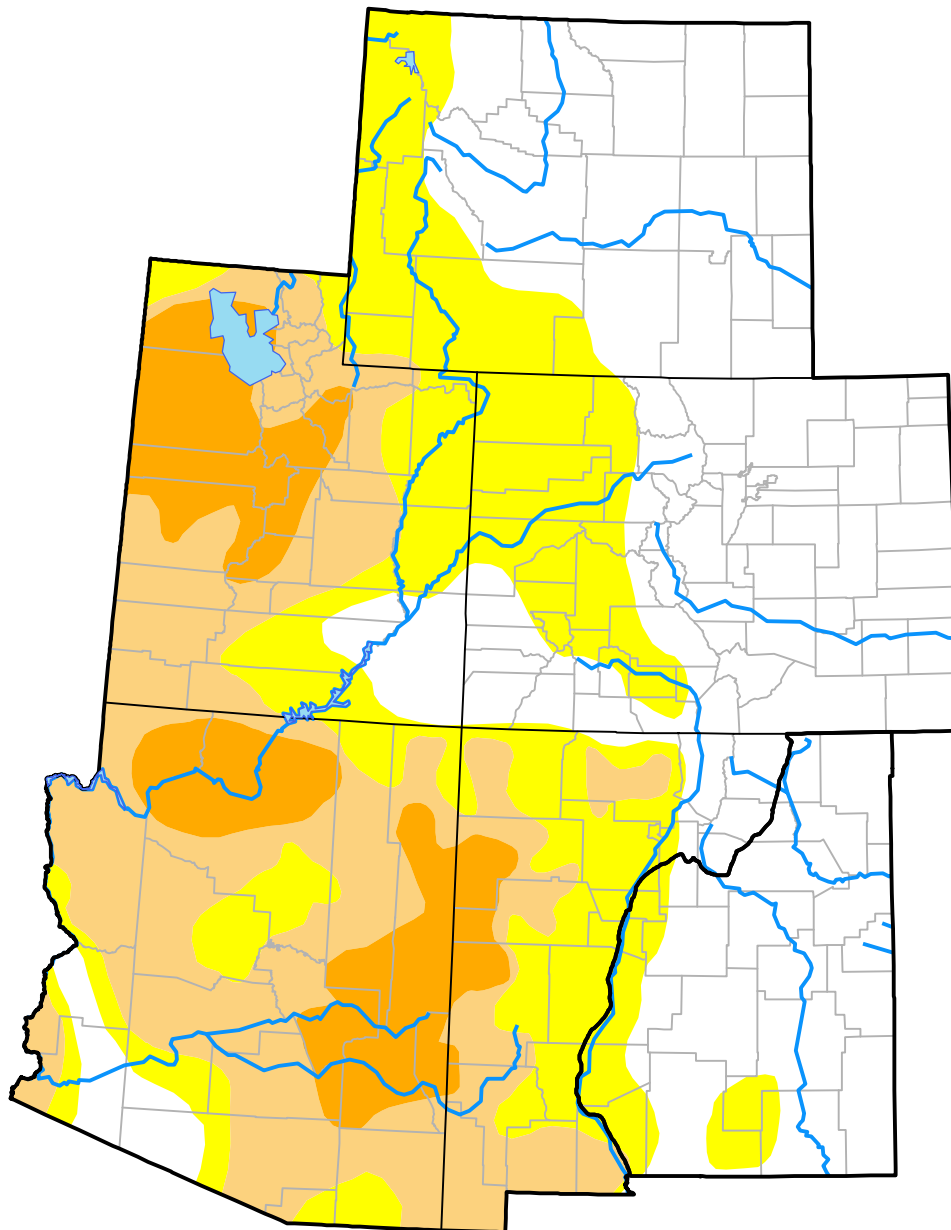
# U.S. Drought Monitor

## Intermountain West RDEWS

July 7, 2015

(Released Thursday, Jul. 9, 2015)

Valid 8 a.m. EDT



Drought Conditions (Percent Area)

	None	D0	D1	D2	D3	D4
<b>Current</b>	42.94	24.77	21.62	10.68	0.00	0.00
<b>Last Week</b> <i>07-02-2015</i>	42.94	24.77	21.62	10.68	0.00	0.00
<b>3 Months Ago</b> <i>04-09-2015</i>	24.20	16.01	32.28	25.79	1.73	0.00
<b>Start of Calendar Year</b> <i>12-31-2014</i>	38.06	14.78	28.13	17.34	1.70	0.00
<b>Start of Water Year</b> <i>10-02-2014</i>	38.96	13.81	27.10	16.97	3.16	0.00
<b>One Year Ago</b> <i>07-10-2014</i>	29.23	9.25	17.86	28.33	14.98	0.34

Intensity:

- None
- D0 Abnormally Dry
- D1 Moderate Drought
- D2 Severe Drought
- D3 Extreme Drought
- D4 Exceptional Drought

The Drought Monitor focuses on broad-scale conditions. Local conditions may vary. For more information on the Drought Monitor, go to <https://droughtmonitor.unl.edu/About.aspx>

Author:

Brian Fuchs  
National Drought Mitigation Center

