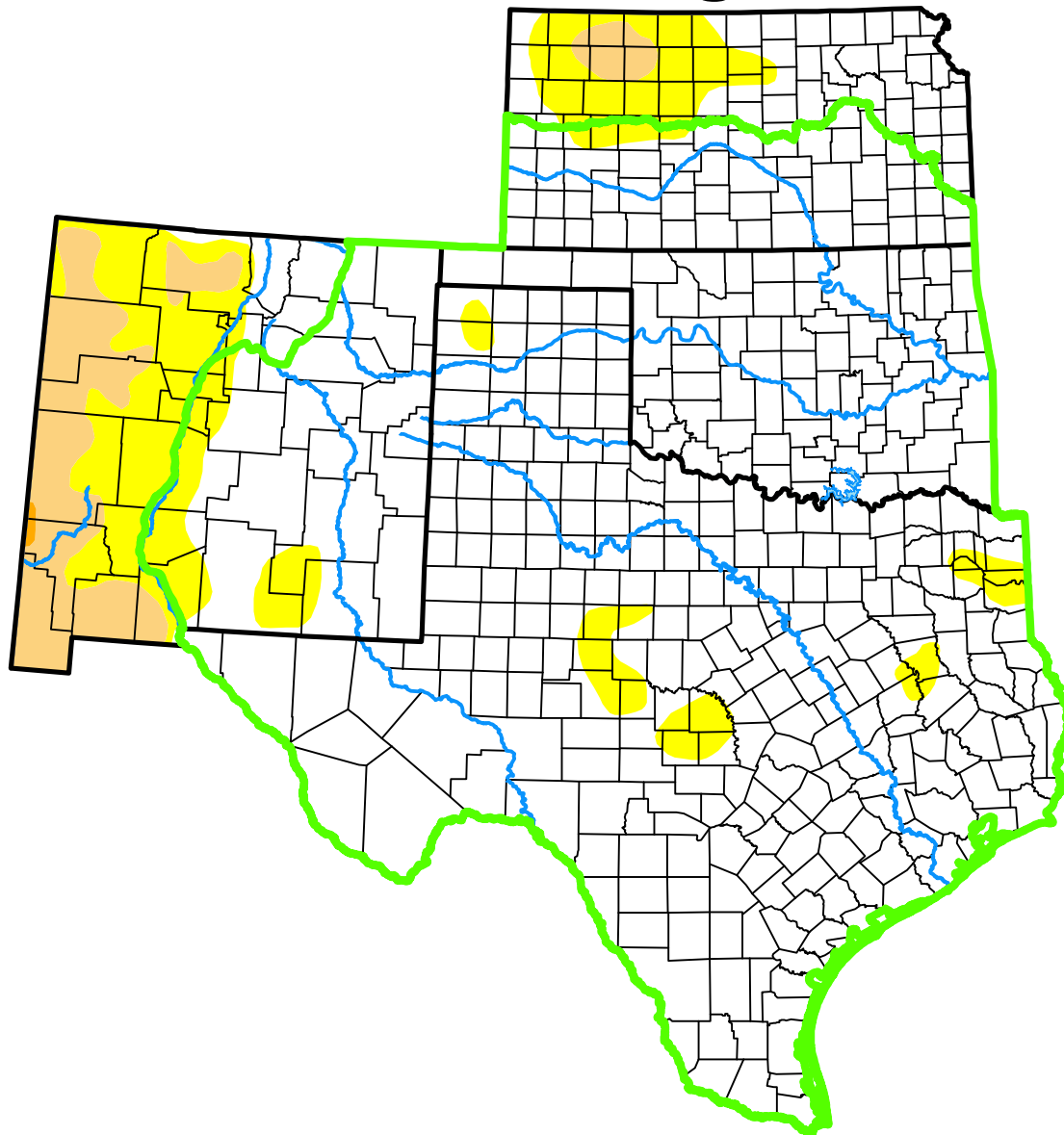


U.S. Drought Monitor

Southern Plains DEWS

and Surrounding Areas



July 21, 2015

(Released Thursday, Jul. 23, 2015)

Valid 8 a.m. EDT

Drought Conditions (Percent Area)

	None	D0-D4	D1-D4	D2-D4	D3-D4	D4
Current	94.57	5.43	0.00	0.00	0.00	0.00
Last Week 07-14-2015	95.45	4.55	0.00	0.00	0.00	0.00
3 Months Ago 04-21-2015	42.91	57.09	44.00	26.79	12.28	2.86
Start of Calendar Year 12-30-2014	29.70	70.30	48.79	27.20	10.92	2.82
Start of Water Year 09-30-2014	23.56	76.44	54.38	31.91	10.55	2.36
One Year Ago 07-22-2014	11.66	88.34	69.75	45.90	16.76	2.97

(Statistics for area highlighted in green)

Intensity:

None	D2 Severe Drought
D0 Abnormally Dry	D3 Extreme Drought
D1 Moderate Drought	D4 Exceptional Drought

The Drought Monitor focuses on broad-scale conditions. Local conditions may vary. For more information on the Drought Monitor, go to <https://droughtmonitor.unl.edu/About.aspx>

Author:

David Simeral
Western Regional Climate Center



droughtmonitor.unl.edu