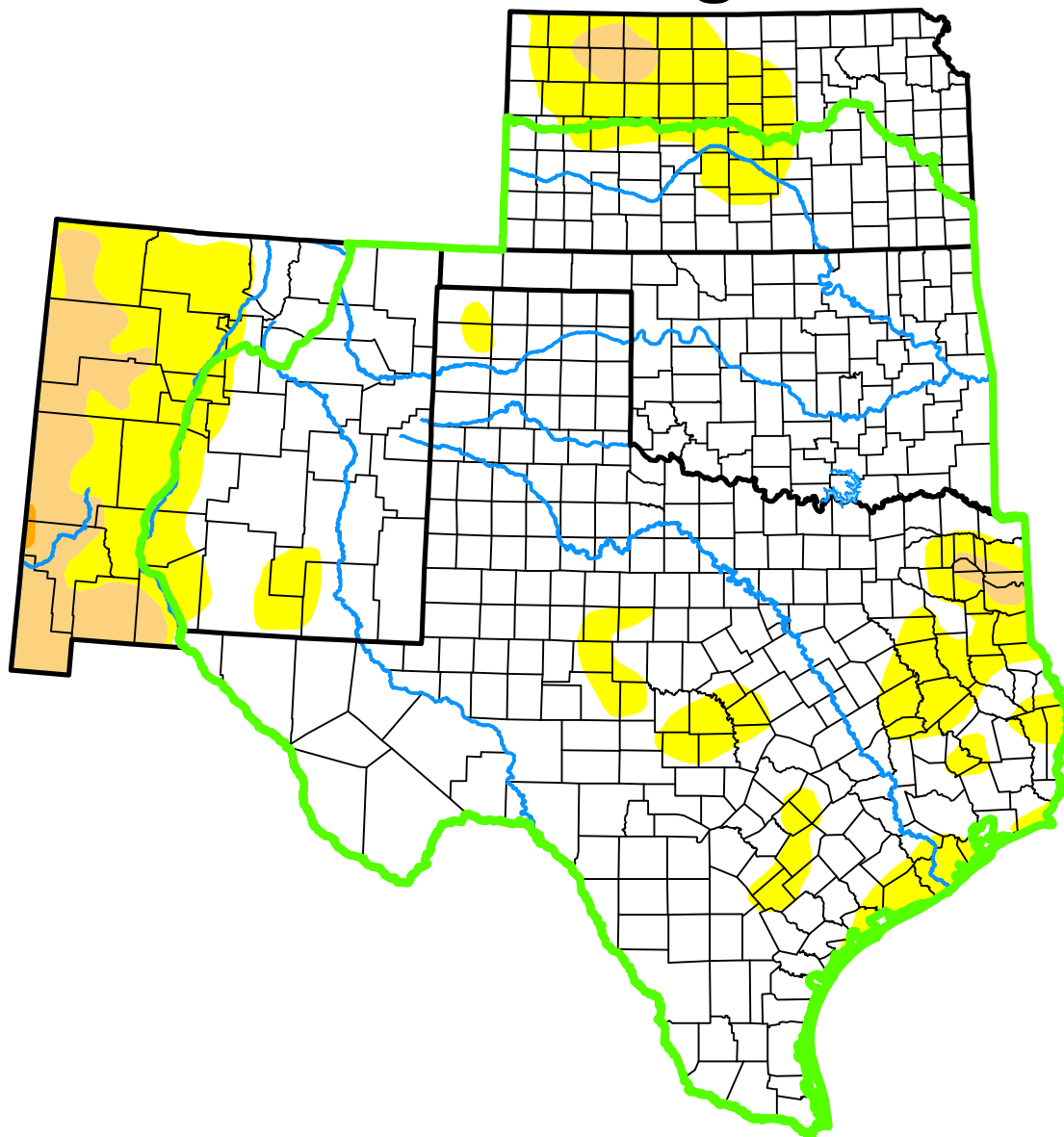


U.S. Drought Monitor

Southern Plains DEWS

and Surrounding Areas



July 28, 2015

(Released Thursday, Jul. 30, 2015)

Valid 8 a.m. EDT

Drought Conditions (Percent Area)

	None	D0-D4	D1-D4	D2-D4	D3-D4	D4
Current	87.82	12.18	0.39	0.00	0.00	0.00
Last Week 07-21-2015	94.57	5.43	0.00	0.00	0.00	0.00
3 Months Ago 04-28-2015	47.35	52.65	40.68	21.87	7.81	1.87
Start of Calendar Year 12-30-2014	29.70	70.30	48.79	27.20	10.92	2.82
Start of Water Year 09-30-2014	23.56	76.44	54.38	31.91	10.55	2.36
One Year Ago 07-29-2014	11.52	88.48	69.73	41.36	14.19	2.48

(Statistics for area highlighted in green)

Intensity:

None	D2 Severe Drought
D0 Abnormally Dry	D3 Extreme Drought
D1 Moderate Drought	D4 Exceptional Drought

The Drought Monitor focuses on broad-scale conditions. Local conditions may vary. For more information on the Drought Monitor, go to <https://droughtmonitor.unl.edu/About.aspx>

Author:

Richard Heim
NCEI/NOAA



droughtmonitor.unl.edu