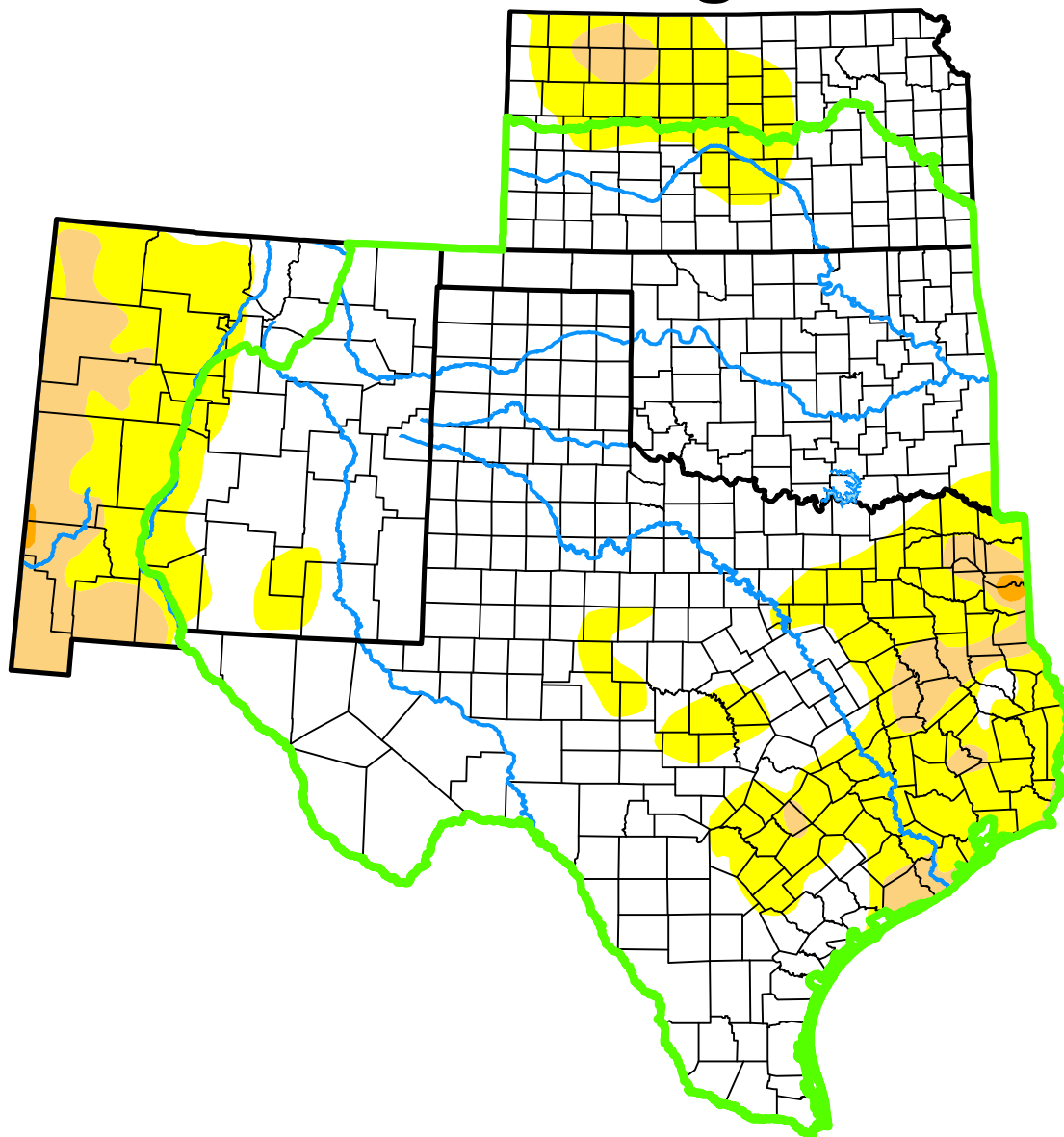


# U.S. Drought Monitor

## Southern Plains DEWS

### and Surrounding Areas



**August 4, 2015**

(Released Thursday, Aug. 6, 2015)

Valid 8 a.m. EDT

*Drought Conditions (Percent Area)*

	None	D0-D4	D1-D4	D2-D4	D3-D4	D4
<b>Current</b>	79.11	20.89	2.77	0.11	0.00	0.00
<b>Last Week</b> 07-28-2015	87.82	12.18	0.39	0.00	0.00	0.00
<b>3 Months Ago</b> 05-05-2015	47.74	52.26	39.85	20.72	6.43	1.76
<b>Start of Calendar Year</b> 12-30-2014	29.70	70.30	48.79	27.20	10.92	2.82
<b>Start of Water Year</b> 09-30-2014	23.56	76.44	54.38	31.91	10.55	2.36
<b>One Year Ago</b> 08-05-2014	12.98	87.02	66.41	37.30	11.92	2.13

(Statistics for area highlighted in green)

#### Intensity:

None	D2 Severe Drought
D0 Abnormally Dry	D3 Extreme Drought
D1 Moderate Drought	D4 Exceptional Drought

The Drought Monitor focuses on broad-scale conditions. Local conditions may vary. For more information on the Drought Monitor, go to <https://droughtmonitor.unl.edu/About.aspx>

#### Author:

Mark Svoboda  
National Drought Mitigation Center



[droughtmonitor.unl.edu](https://droughtmonitor.unl.edu)