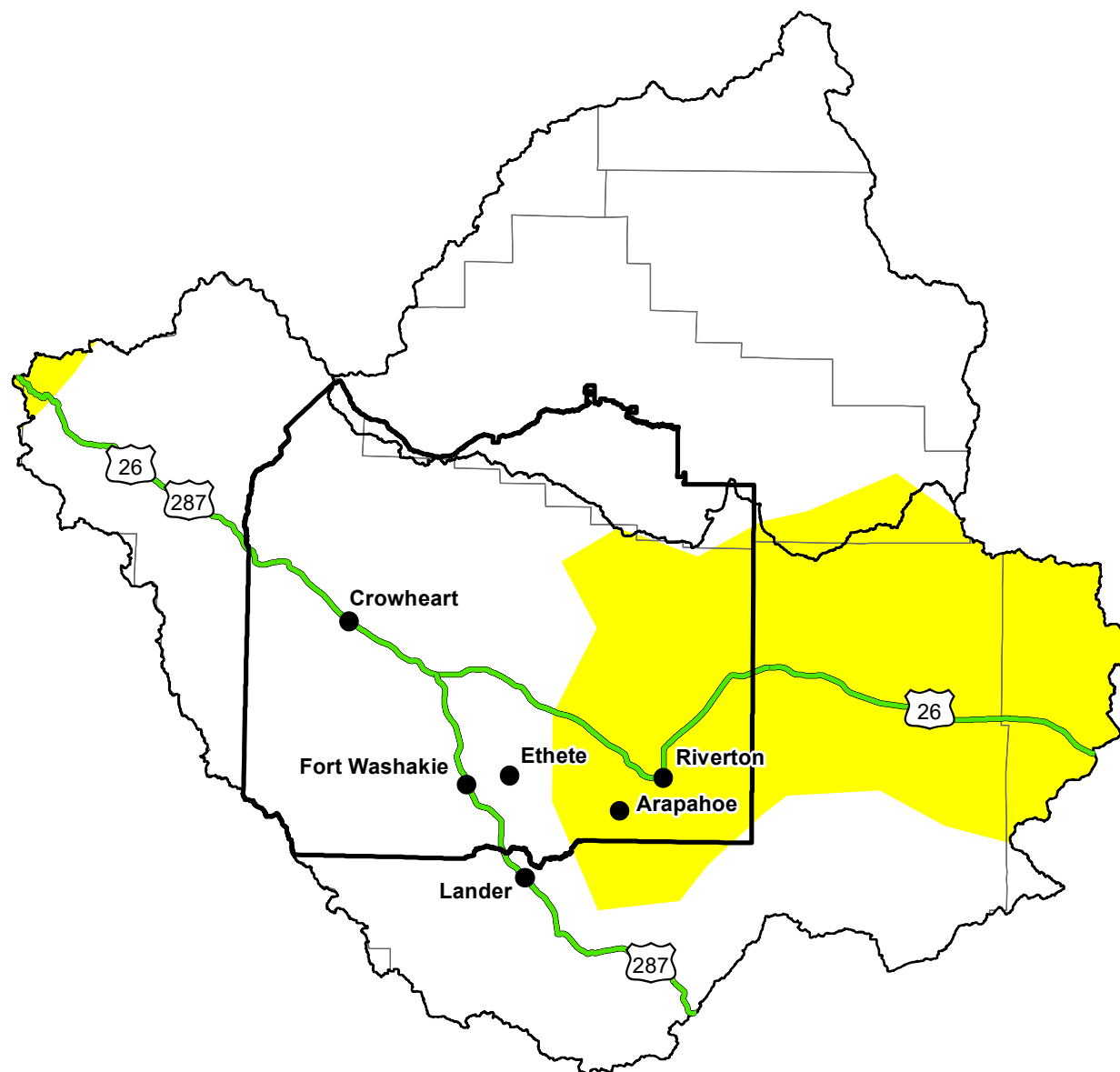







U.S. Drought Monitor

Wind River and Surrounding Area

October 20, 2015
(Released Thursday, Oct. 22, 2015)
Valid 8 a.m. EDT



Intensity:

-  D0 Abnormally Dry
-  D1 Moderate Drought
-  D2 Severe Drought
-  D3 Extreme Drought
-  D4 Exceptional Drought

The Drought Monitor focuses on broad-scale conditions. Local conditions may vary. For more information on the Drought Monitor, go to <https://droughtmonitor.unl.edu/About.aspx>

Author:

Brad Rippey
U.S. Department of Agriculture



<http://droughtmonitor.unl.edu/>