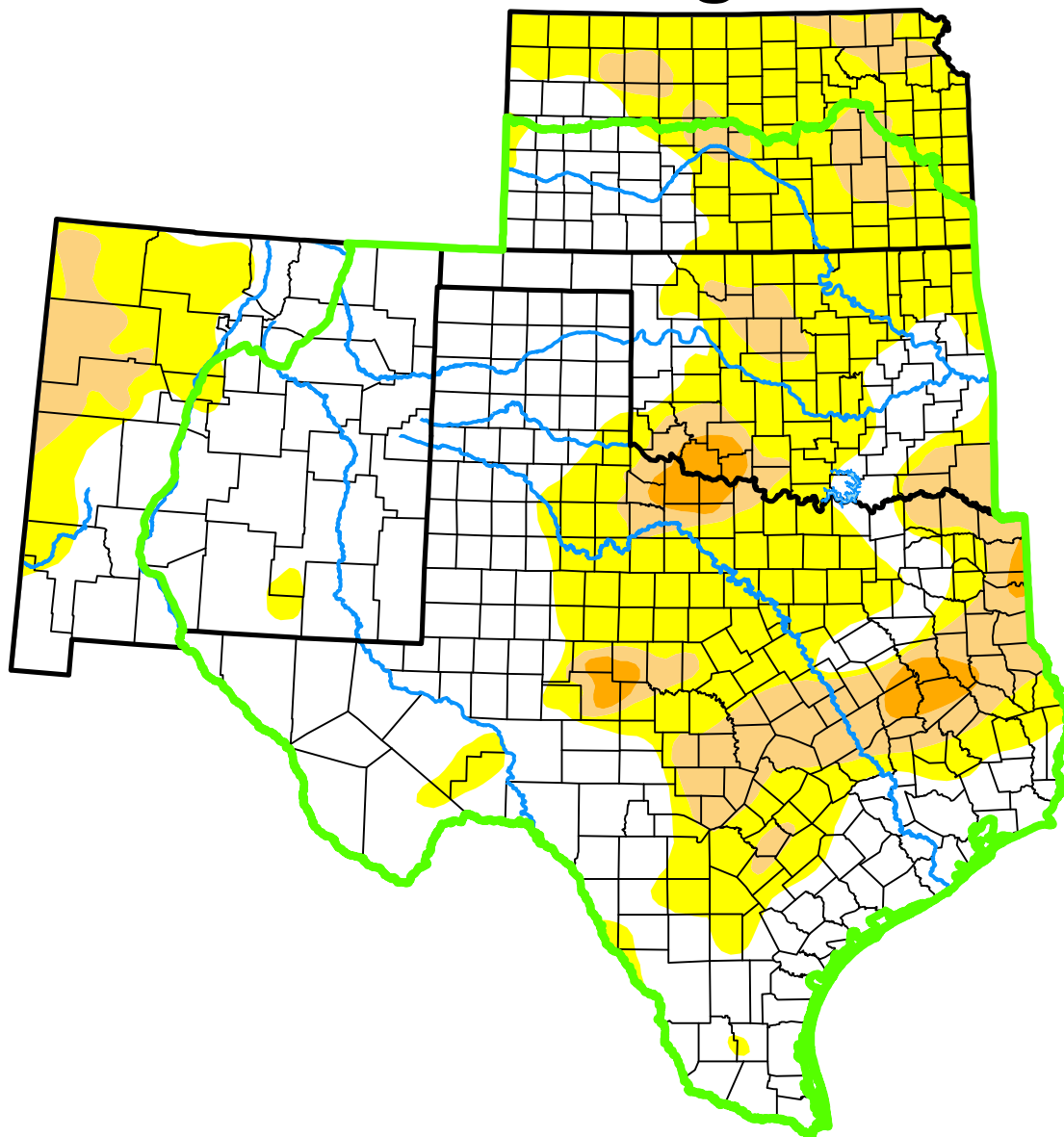


U.S. Drought Monitor

Southern Plains DEWS

and Surrounding Areas



October 27, 2015

(Released Thursday, Oct. 29, 2015)

Valid 8 a.m. EDT

Drought Conditions (Percent Area)

	None	D0-D4	D1-D4	D2-D4	D3-D4	D4
Current	56.95	43.05	13.49	2.16	0.00	0.00
Last Week <i>10-20-2015</i>	45.02	54.98	36.95	28.16	13.62	3.33
3 Months Ago <i>07-28-2015</i>	87.82	12.18	0.39	0.00	0.00	0.00
Start of Calendar Year <i>12-30-2014</i>	29.70	70.30	48.79	27.20	10.92	2.82
Start of Water Year <i>09-29-2015</i>	50.14	49.86	25.82	11.59	3.93	0.00
One Year Ago <i>10-28-2014</i>	24.59	75.41	51.81	30.57	11.24	3.27

(Statistics for area highlighted in green)

Intensity:

None	D2 Severe Drought
D0 Abnormally Dry	D3 Extreme Drought
D1 Moderate Drought	D4 Exceptional Drought

The Drought Monitor focuses on broad-scale conditions. Local conditions may vary. For more information on the Drought Monitor, go to <https://droughtmonitor.unl.edu/About.aspx>

Author:

Brad Rippey
U.S. Department of Agriculture



droughtmonitor.unl.edu