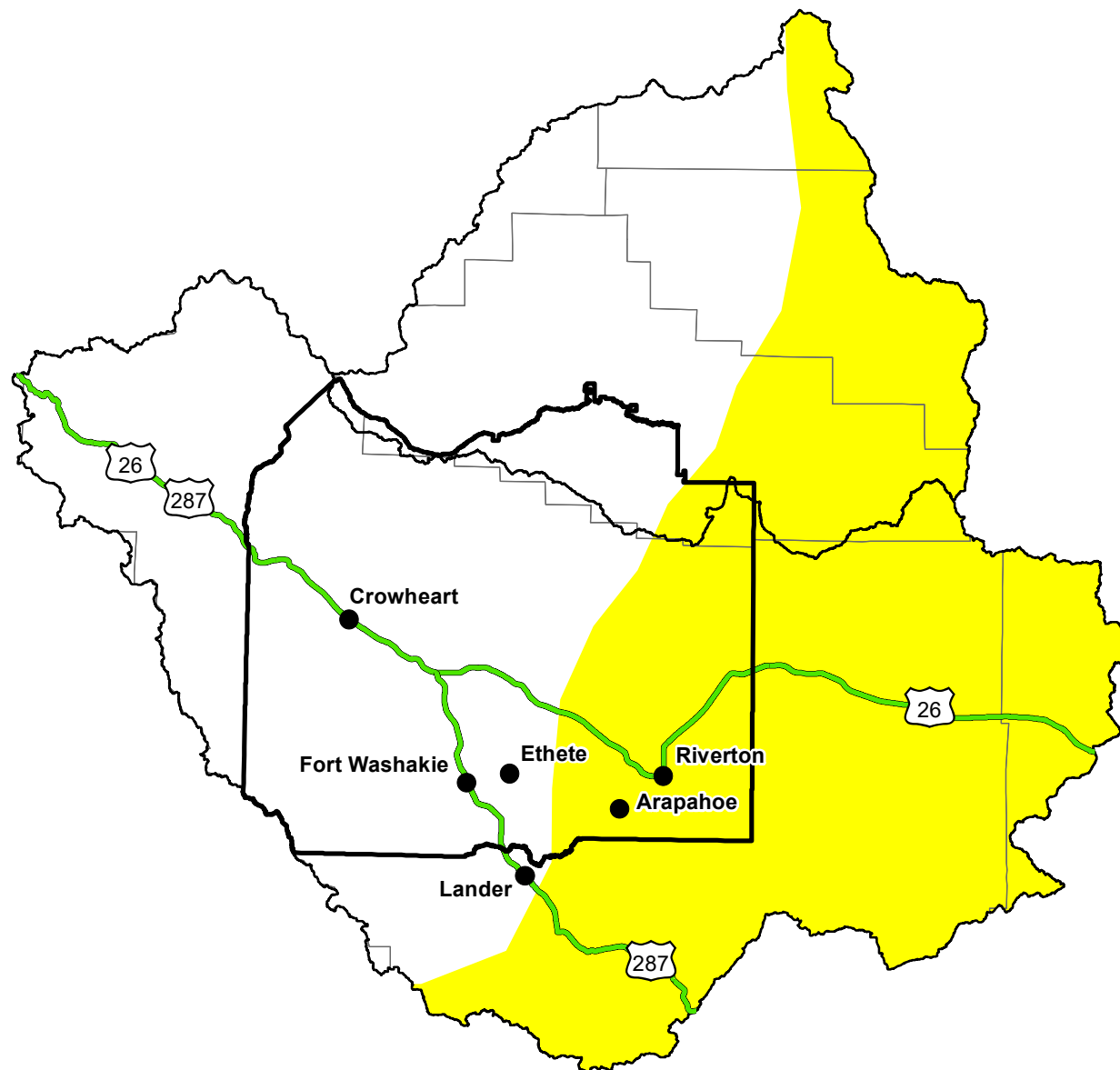


# U.S. Drought Monitor

## Wind River and Surrounding Area

**November 24, 2015**  
(Released Wednesday, Nov. 25, 2015)  
Valid 7 a.m. EST



### Intensity:

- D0 Abnormally Dry
- D1 Moderate Drought
- D2 Severe Drought
- D3 Extreme Drought
- D4 Exceptional Drought

*The Drought Monitor focuses on broad-scale conditions. Local conditions may vary. For more information on the Drought Monitor, go to <https://droughtmonitor.unl.edu/About.aspx>*

### Author:

Richard Heim  
NCEI/NOAA



<http://droughtmonitor.unl.edu/>