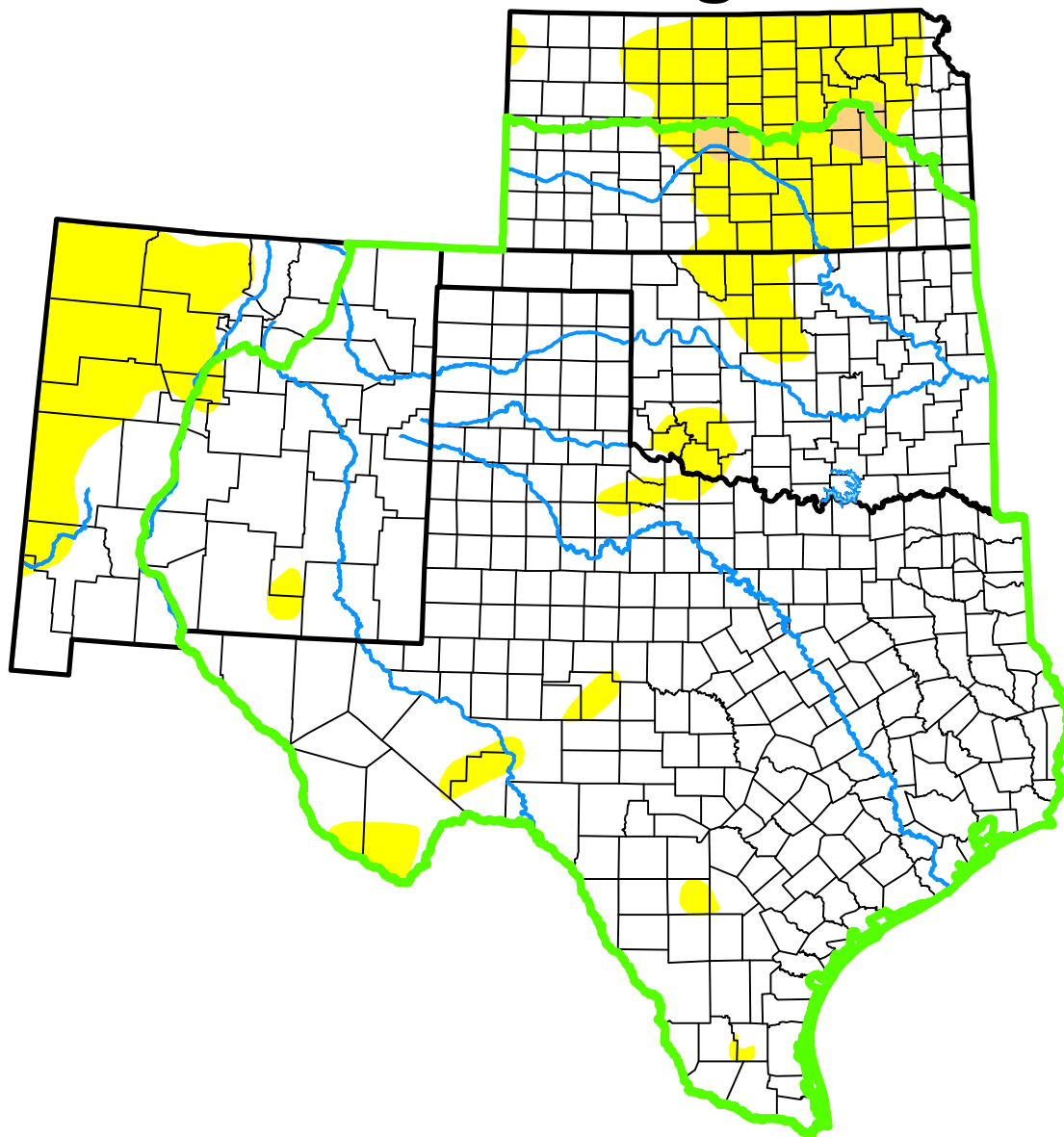


U.S. Drought Monitor

Southern Plains DEWS

and Surrounding Areas



December 1, 2015

(Released Thursday, Dec. 3, 2015)

Valid 7 a.m. EST

Drought Conditions (Percent Area)

	None	D0	D1	D2	D3	D4
Current	90.49	8.80	0.71	0.00	0.00	0.00
Last Week <i>11-24-2015</i>	84.69	11.16	4.15	0.00	0.00	0.00
3 Months Ago <i>09-01-2015</i>	68.67	15.02	9.85	5.67	0.79	0.00
Start of Calendar Year <i>12-30-2014</i>	29.70	21.51	21.59	16.28	8.10	2.82
Start of Water Year <i>09-29-2015</i>	50.14	24.04	14.24	7.66	3.93	0.00
One Year Ago <i>12-02-2014</i>	29.31	23.14	22.56	15.93	6.71	2.35

(Statistics for area highlighted in green)

Intensity:

None	D2 Severe Drought
D0 Abnormally Dry	D3 Extreme Drought
D1 Moderate Drought	D4 Exceptional Drought

The Drought Monitor focuses on broad-scale conditions. Local conditions may vary. For more information on the Drought Monitor, go to <https://droughtmonitor.unl.edu/About.aspx>

Author:

David Simeral
Western Regional Climate Center



droughtmonitor.unl.edu