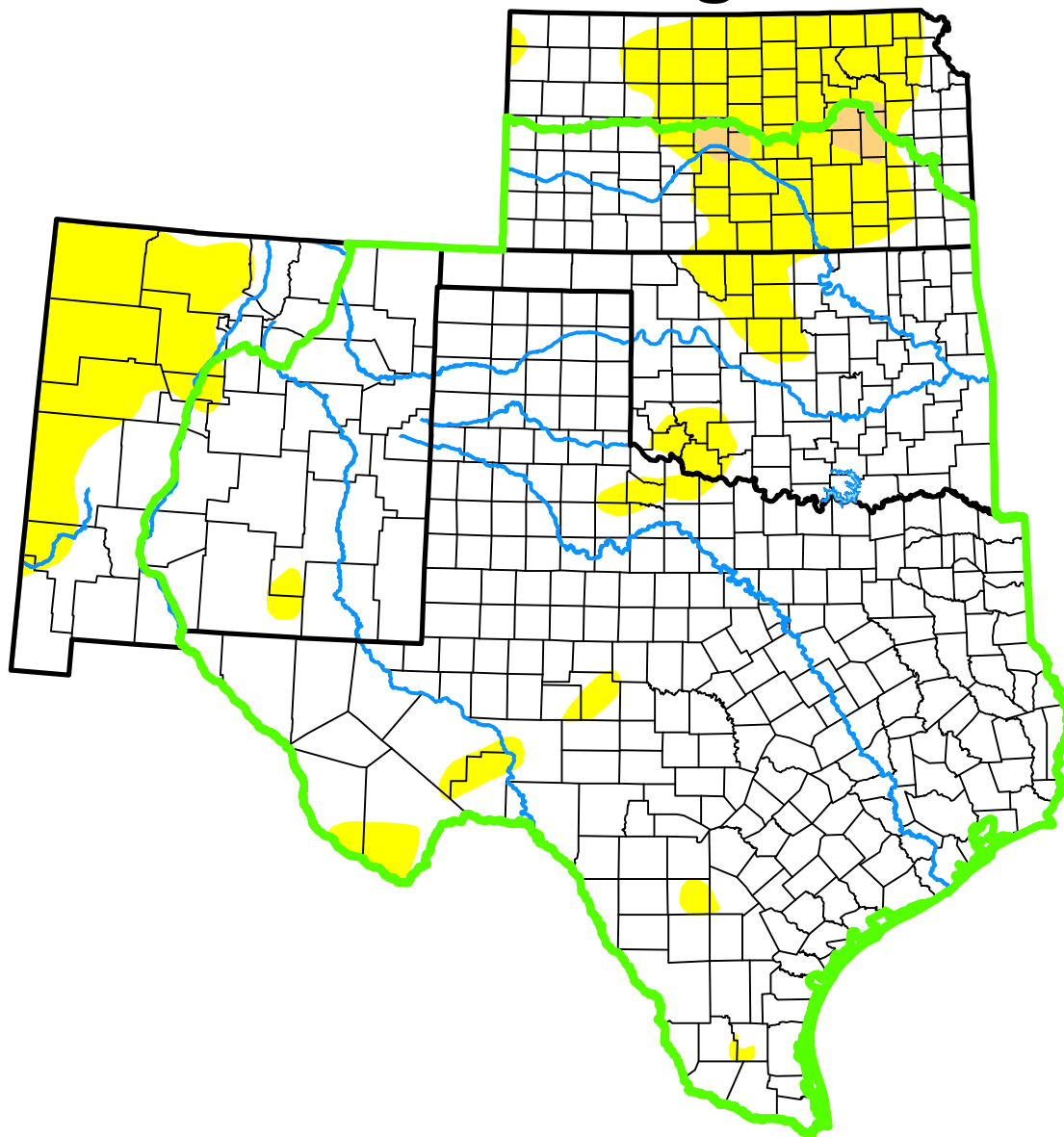


# U.S. Drought Monitor

## Southern Plains DEWS

### and Surrounding Areas



**December 1, 2015**

(Released Thursday, Dec. 3, 2015)

Valid 7 a.m. EST

*Drought Conditions (Percent Area)*

	None	D0-D4	D1-D4	D2-D4	D3-D4	D4
<b>Current</b>	90.49	9.51	0.71	0.00	0.00	0.00
<b>Last Week</b> <i>11-24-2015</i>	84.69	15.31	4.15	0.00	0.00	0.00
<b>3 Months Ago</b> <i>09-01-2015</i>	68.67	31.33	16.32	6.47	0.79	0.00
<b>Start of Calendar Year</b> <i>12-30-2014</i>	29.70	70.30	48.79	27.20	10.92	2.82
<b>Start of Water Year</b> <i>09-29-2015</i>	50.14	49.86	25.82	11.59	3.93	0.00
<b>One Year Ago</b> <i>12-02-2014</i>	29.31	70.69	47.55	24.98	9.06	2.35

(Statistics for area highlighted in green)

#### Intensity:

None	D2 Severe Drought
D0 Abnormally Dry	D3 Extreme Drought
D1 Moderate Drought	D4 Exceptional Drought

The Drought Monitor focuses on broad-scale conditions. Local conditions may vary. For more information on the Drought Monitor, go to <https://droughtmonitor.unl.edu/About.aspx>

#### Author:

David Simeral  
Western Regional Climate Center



[droughtmonitor.unl.edu](https://droughtmonitor.unl.edu)