

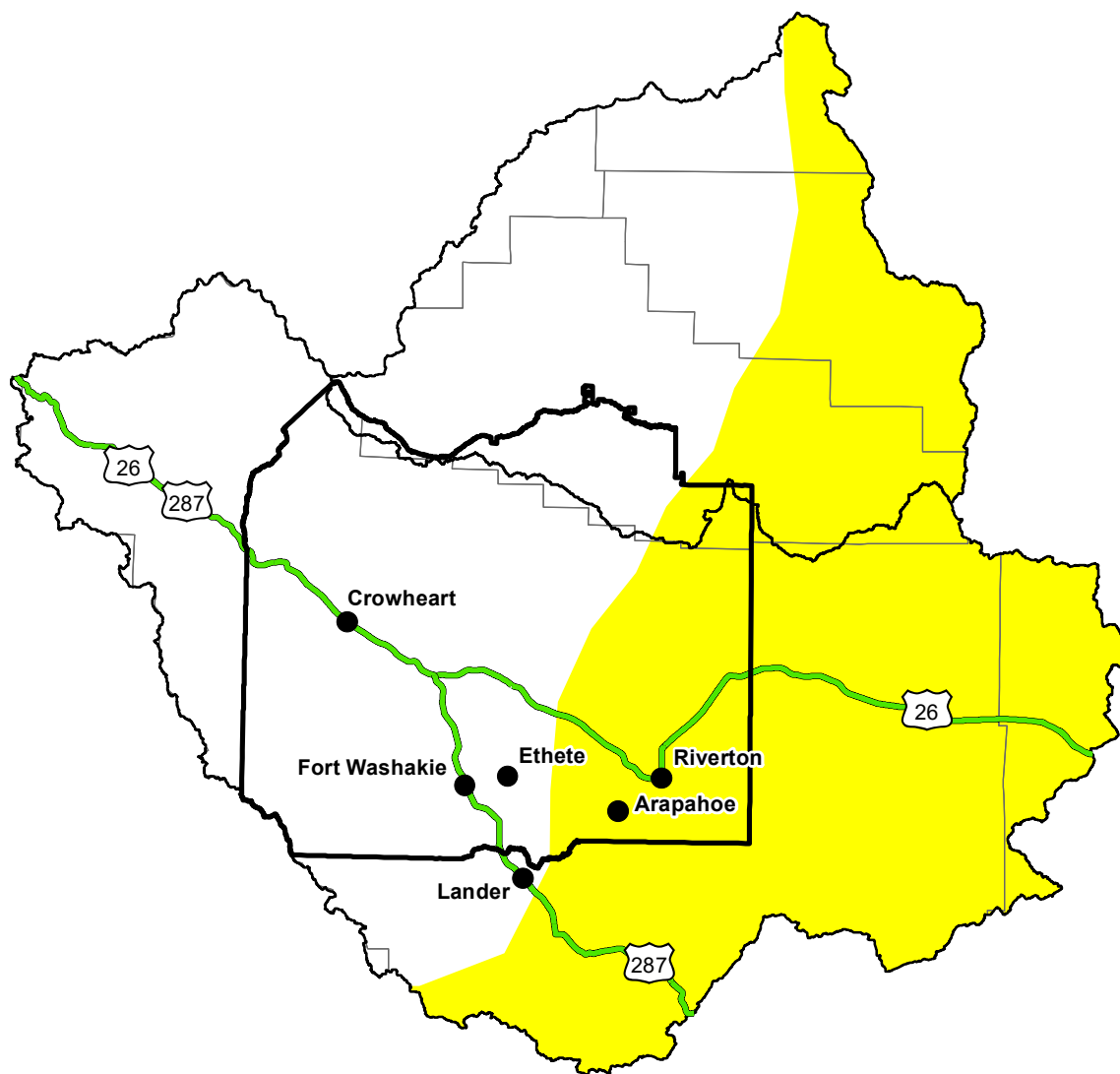
# U.S. Drought Monitor

## Wind River and Surrounding Area

**December 8, 2015**

(Released Thursday, Dec. 10, 2015)

Valid 7 a.m. EST



*Drought Conditions (Percent Area)*

	None	D0	D1	D2	D3	D4
<b>Current</b>	0.00	0.00	0.00	0.00	0.00	0.00
<b>Last Week</b> 12-03-2015	0.00	0.00	0.00	0.00	0.00	0.00
<b>3 Months Ago</b> 09-10-2015	0.00	0.00	0.00	0.00	0.00	0.00
<b>Start of Calendar Year</b> 12-31-2014	0.00	0.00	0.00	0.00	0.00	0.00
<b>Start of Water Year</b> 10-01-2015	0.00	0.00	0.00	0.00	0.00	0.00
<b>One Year Ago</b> 12-11-2014	0.00	0.00	0.00	0.00	0.00	0.00

*Note: Statistics are for the surrounding area including the reservation.*

### Intensity:

None	D2 Severe Drought
D0 Abnormally Dry	D3 Extreme Drought
D1 Moderate Drought	D4 Exceptional Drought

*The Drought Monitor focuses on broad-scale conditions. Local conditions may vary. For more information on the Drought Monitor, go to <https://droughtmonitor.unl.edu/About.aspx>*

### Author:

Richard Tinker  
CPC/NOAA/NWS/NCEP



<http://droughtmonitor.unl.edu/>