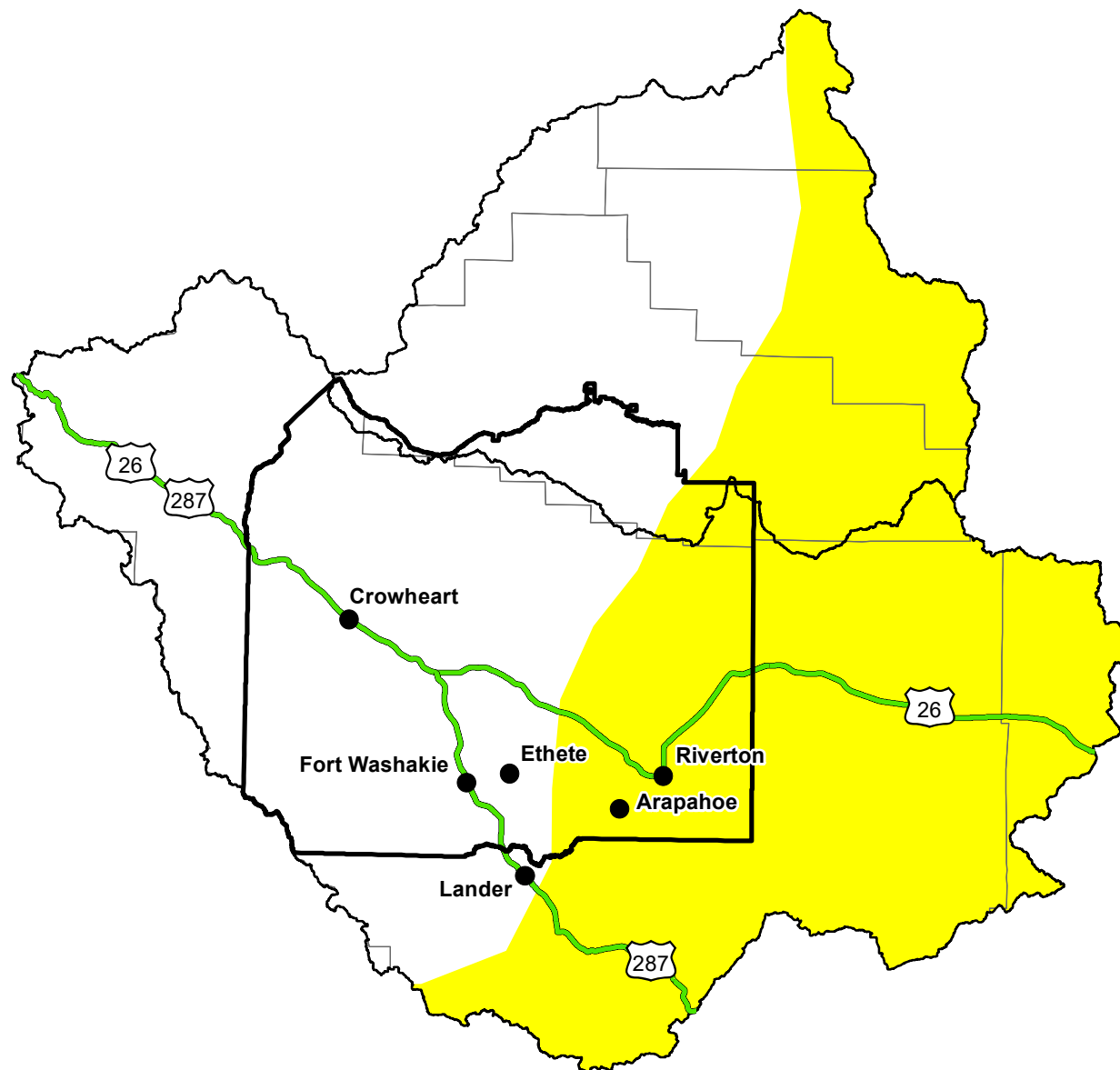


U.S. Drought Monitor

Wind River and Surrounding Area

December 22, 2015
(Released Thursday, Dec. 24, 2015)
Valid 7 a.m. EST



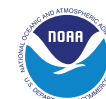
Intensity:

- D0 Abnormally Dry
- D1 Moderate Drought
- D2 Severe Drought
- D3 Extreme Drought
- D4 Exceptional Drought

The Drought Monitor focuses on broad-scale conditions. Local conditions may vary. For more information on the Drought Monitor, go to <https://droughtmonitor.unl.edu/About.aspx>

Author:

Richard Heim
NCEI/NOAA



<http://droughtmonitor.unl.edu/>