

U.S. Drought Monitor

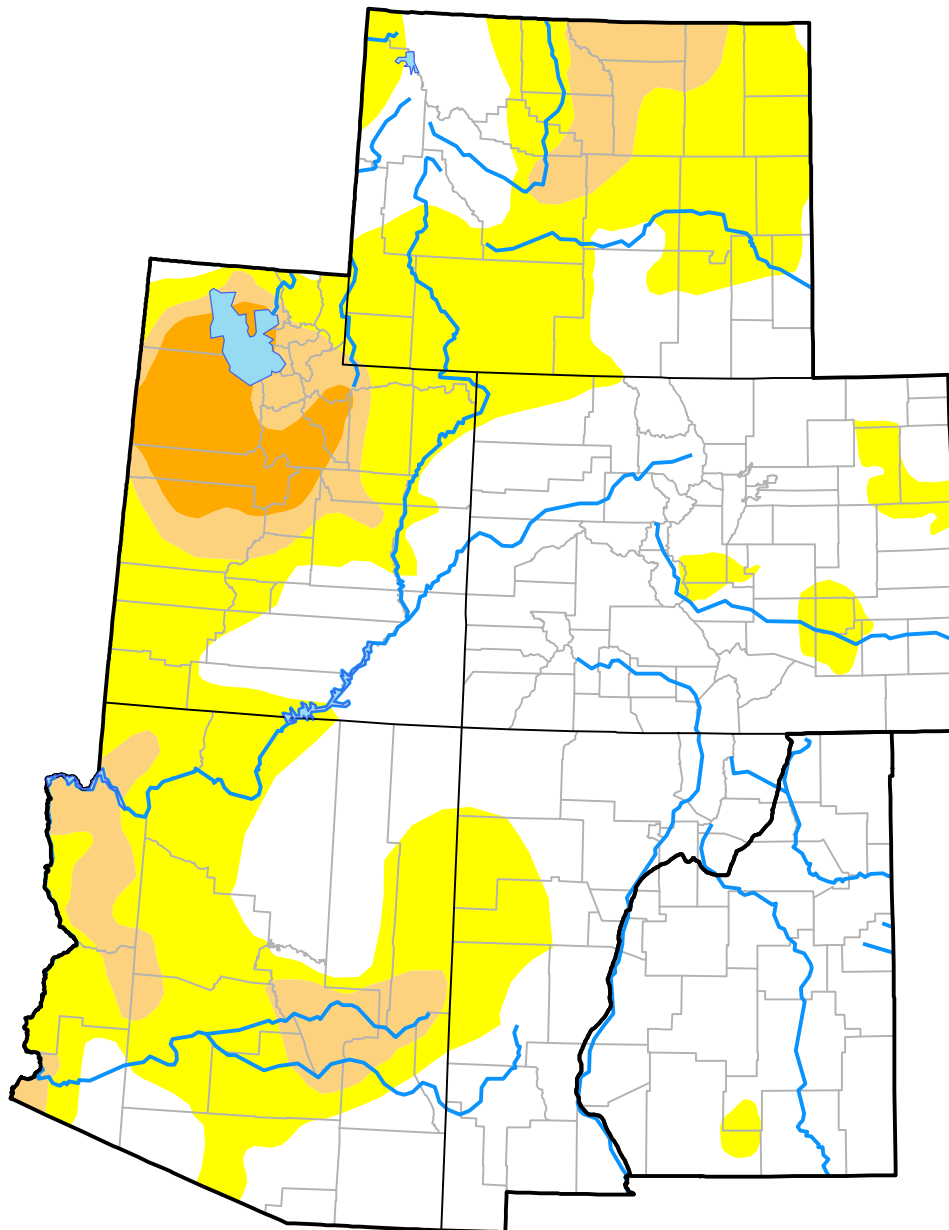
Intermountain West RDEWS

January 12, 2016
 (Released Thursday, Jan. 14, 2016)

Valid 7 a.m. EST

Drought Conditions (Percent Area)

	None	D0	D1	D2	D3	D4
Current	57.60	30.67	8.31	3.41	0.00	0.00
Last Week <i>01-07-2016</i>	50.44	33.31	12.57	3.69	0.00	0.00
3 Months Ago <i>10-15-2015</i>	43.17	31.31	20.46	5.07	0.00	0.00
Start of Calendar Year <i>12-31-2015</i>	49.11	34.91	12.08	3.91	0.00	0.00
Start of Water Year <i>10-01-2015</i>	43.05	31.10	20.77	5.07	0.00	0.00
One Year Ago <i>01-15-2015</i>	38.06	15.04	28.04	17.40	1.47	0.00



Intensity:

- None
- D0 Abnormally Dry
- D1 Moderate Drought
- D2 Severe Drought
- D3 Extreme Drought
- D4 Exceptional Drought

The Drought Monitor focuses on broad-scale conditions. Local conditions may vary. For more information on the Drought Monitor, go to <https://droughtmonitor.unl.edu/About.aspx>

Author:

Brian Fuchs
 National Drought Mitigation Center



droughtmonitor.unl.edu