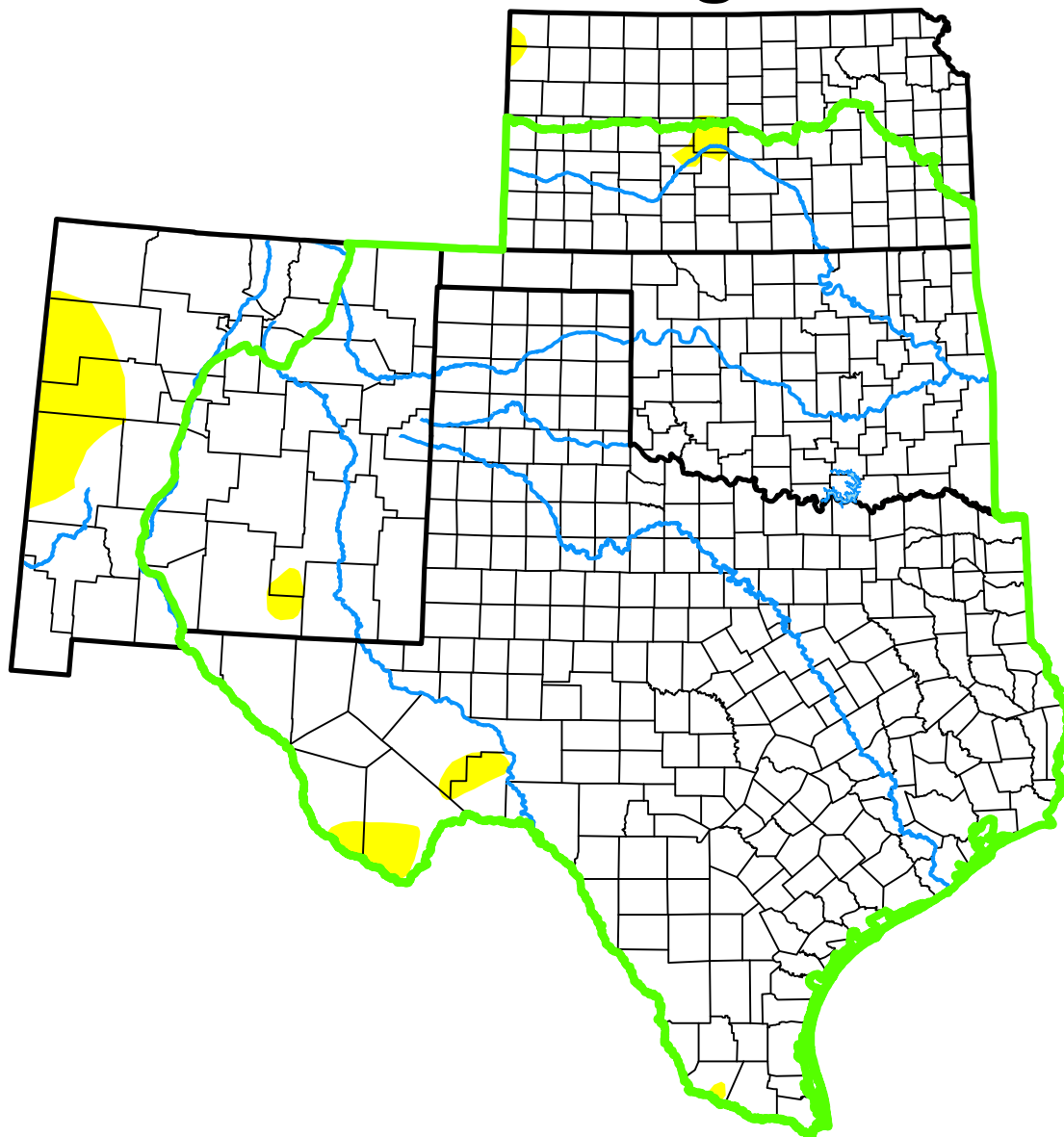


U.S. Drought Monitor

Southern Plains DEWS

and Surrounding Areas



January 12, 2016

(Released Thursday, Jan. 14, 2016)

Valid 7 a.m. EST

Drought Conditions (Percent Area)

	None	D0-D4	D1-D4	D2-D4	D3-D4	D4
Current	98.45	1.55	0.00	0.00	0.00	0.00
Last Week 01-05-2016	98.45	1.55	0.00	0.00	0.00	0.00
3 Months Ago 10-13-2015	47.79	52.21	32.90	22.10	8.91	0.85
Start of Calendar Year 12-29-2015	96.54	3.46	0.00	0.00	0.00	0.00
Start of Water Year 09-29-2015	50.14	49.86	25.82	11.59	3.93	0.00
One Year Ago 01-13-2015	33.59	66.41	45.49	26.18	10.58	2.65

(Statistics for area highlighted in green)

Intensity:

None	D2 Severe Drought
D0 Abnormally Dry	D3 Extreme Drought
D1 Moderate Drought	D4 Exceptional Drought

The Drought Monitor focuses on broad-scale conditions. Local conditions may vary. For more information on the Drought Monitor, go to <https://droughtmonitor.unl.edu/About.aspx>

Author:

Brian Fuchs
National Drought Mitigation Center



droughtmonitor.unl.edu