

# U.S. Drought Monitor

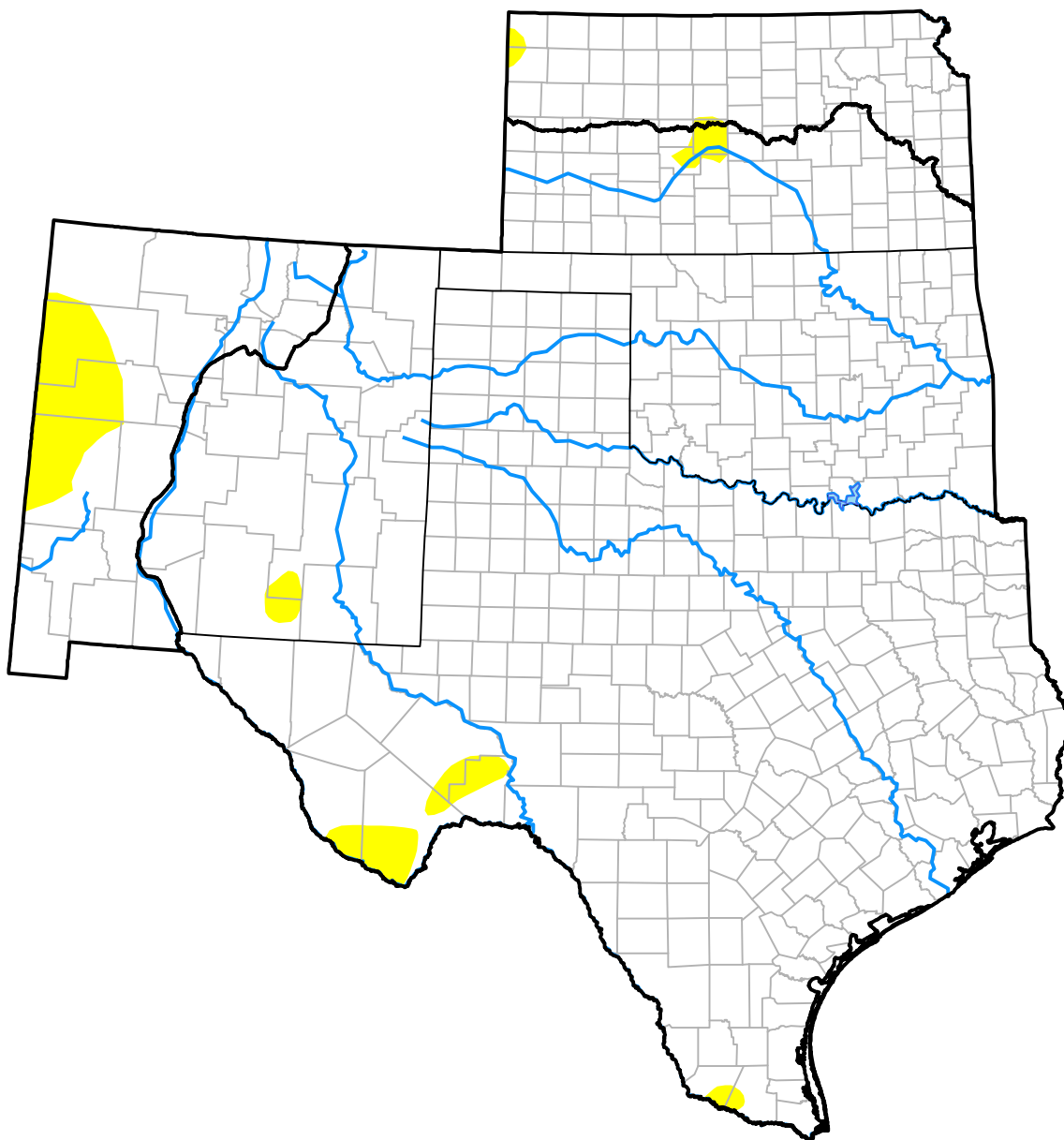
## Southern Plains RDEWS

January 26, 2016  
(Released Thursday, Jan. 28, 2016)

Valid 7 a.m. EST

Drought Conditions (Percent Area)

	None	D0	D1	D2	D3	D4
<b>Current</b>	96.41	3.59	0.00	0.00	0.00	0.00
<b>Last Week</b> <i>01-21-2016</i>	96.56	3.44	0.00	0.00	0.00	0.00
<b>3 Months Ago</b> <i>10-29-2015</i>	57.46	28.64	11.82	2.08	0.00	0.00
<b>Start of Calendar Year</b> <i>12-31-2015</i>	90.39	9.61	0.00	0.00	0.00	0.00
<b>Start of Water Year</b> <i>10-01-2015</i>	43.19	29.88	15.77	7.38	3.79	0.00
<b>One Year Ago</b> <i>01-29-2015</i>	28.02	22.70	20.65	17.66	8.33	2.64



**Intensity:**

- None
- D0 Abnormally Dry
- D1 Moderate Drought
- D2 Severe Drought
- D3 Extreme Drought
- D4 Exceptional Drought

The Drought Monitor focuses on broad-scale conditions. Local conditions may vary. For more information on the Drought Monitor, go to <https://droughtmonitor.unl.edu/About.aspx>

**Author:**

Mark Svoboda  
National Drought Mitigation Center



[droughtmonitor.unl.edu](https://droughtmonitor.unl.edu)