

# U.S. Drought Monitor

## Wind River and Surrounding Area

**February 9, 2016**

(Released Thursday, Feb. 11, 2016)

Valid 7 a.m. EST

*Drought Conditions (Percent Area)*

	None	D0-D4	D1-D4	D2-D4	D3-D4	D4
<b>Current</b>	0.00	0.00	0.00	0.00	0.00	0.00
<b>Last Week</b> <i>02-04-2016</i>	0.00	0.00	0.00	0.00	0.00	0.00
<b>3 Months Ago</b> <i>11-12-2015</i>	0.00	0.00	0.00	0.00	0.00	0.00
<b>Start of Calendar Year</b> <i>12-31-2015</i>	0.00	0.00	0.00	0.00	0.00	0.00
<b>Start of Water Year</b> <i>10-01-2015</i>	0.00	0.00	0.00	0.00	0.00	0.00
<b>One Year Ago</b> <i>02-12-2015</i>	0.00	0.00	0.00	0.00	0.00	0.00

*Note: Statistics are for the surrounding area including the reservation.*

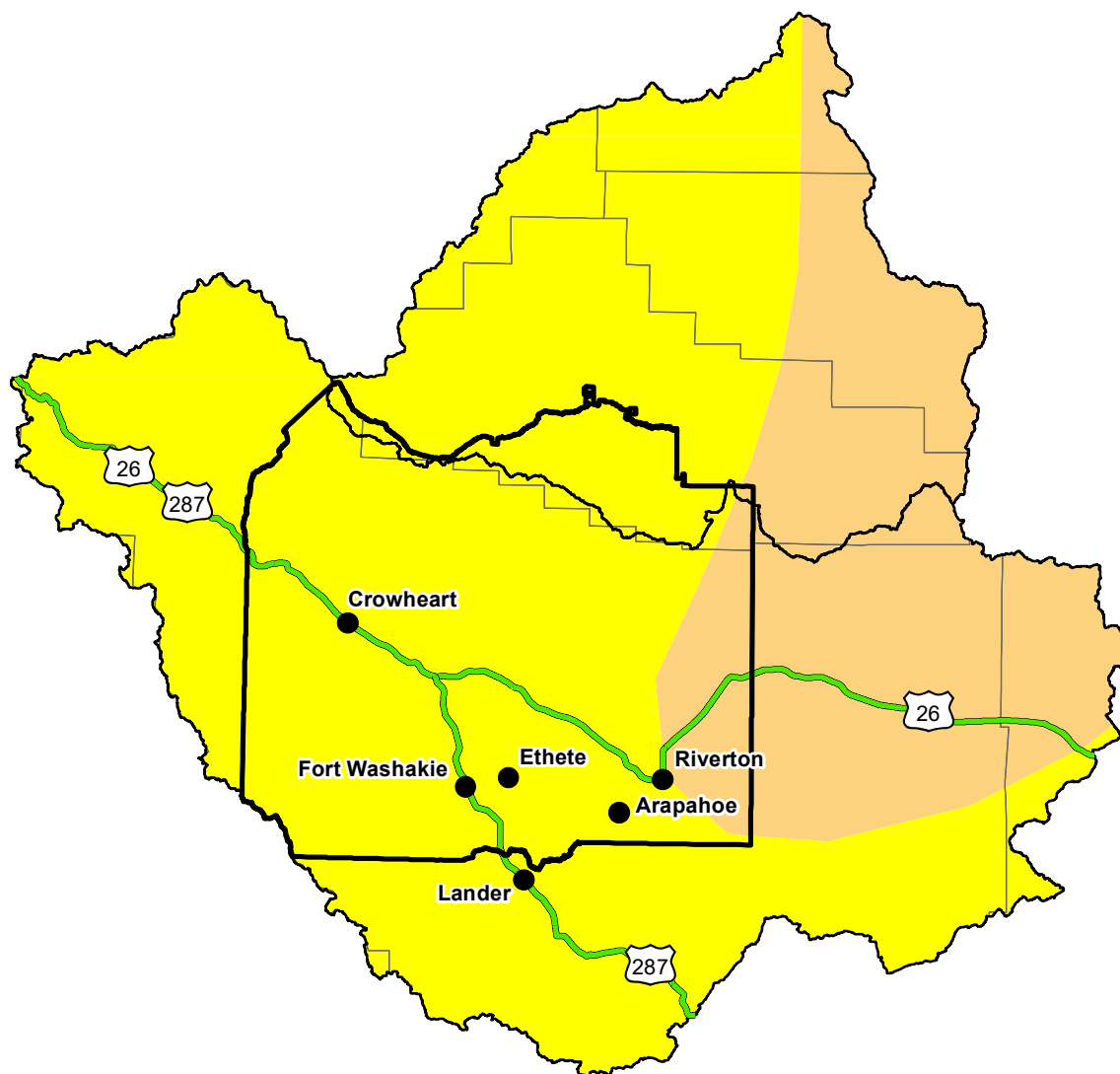
### Intensity:

 None	 D2 Severe Drought
 D0 Abnormally Dry	 D3 Extreme Drought
 D1 Moderate Drought	 D4 Exceptional Drought

*The Drought Monitor focuses on broad-scale conditions. Local conditions may vary. For more information on the Drought Monitor, go to <https://droughtmonitor.unl.edu/About.aspx>*

### Author:

Anthony Artusa  
NOAA/NWS/NCEP/CPC



<http://droughtmonitor.unl.edu/>