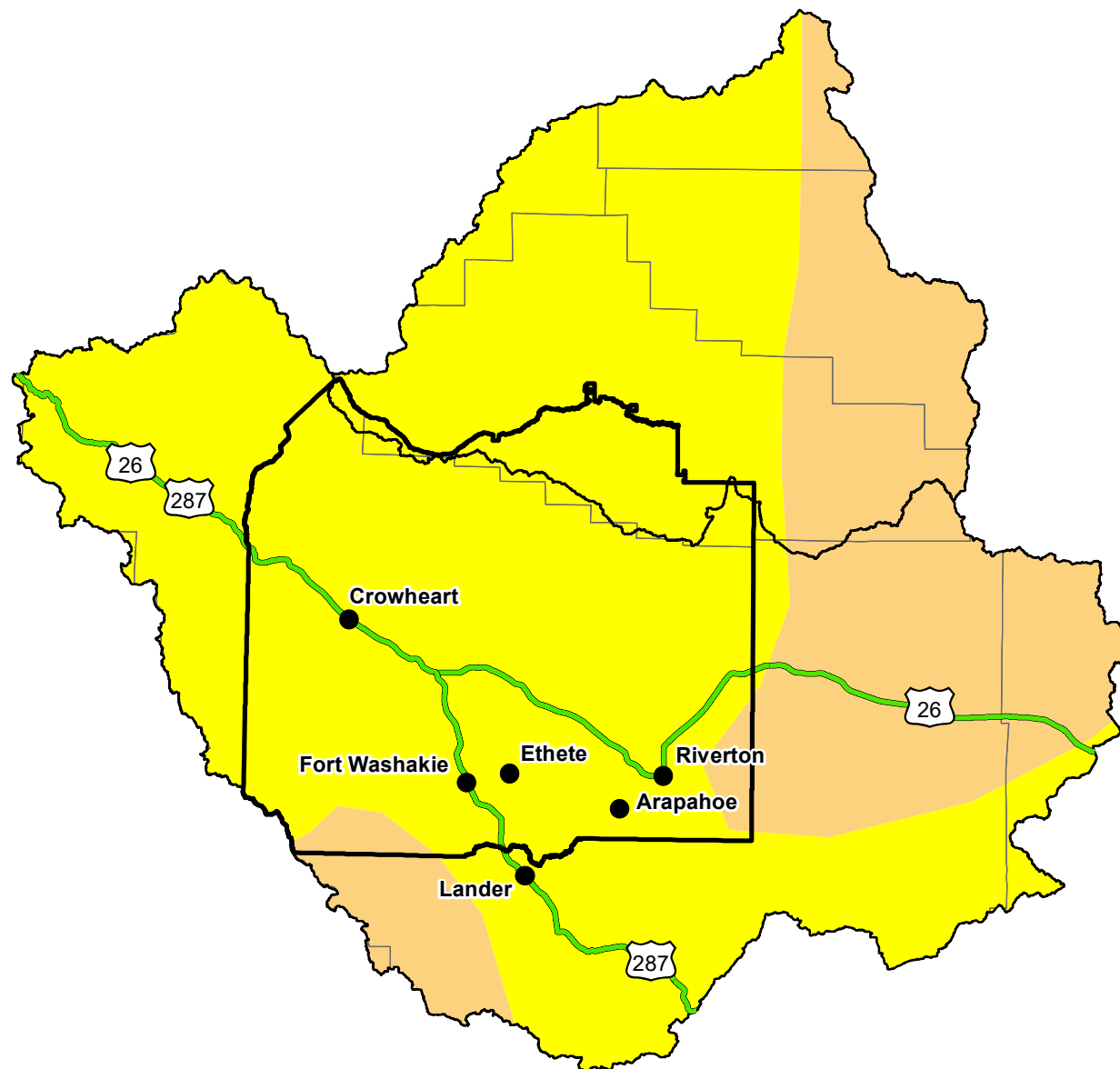


# U.S. Drought Monitor Wind River and Surrounding Area

**February 23, 2016**  
(Released Thursday, Feb. 25, 2016)  
Valid 7 a.m. EST



## Intensity:

- D0 Abnormally Dry
- D1 Moderate Drought
- D2 Severe Drought
- D3 Extreme Drought
- D4 Exceptional Drought

*The Drought Monitor focuses on broad-scale conditions. Local conditions may vary. For more information on the Drought Monitor, go to <https://droughtmonitor.unl.edu/About.aspx>*

## Author:

Eric Luebehusen  
U.S. Department of Agriculture



<http://droughtmonitor.unl.edu/>