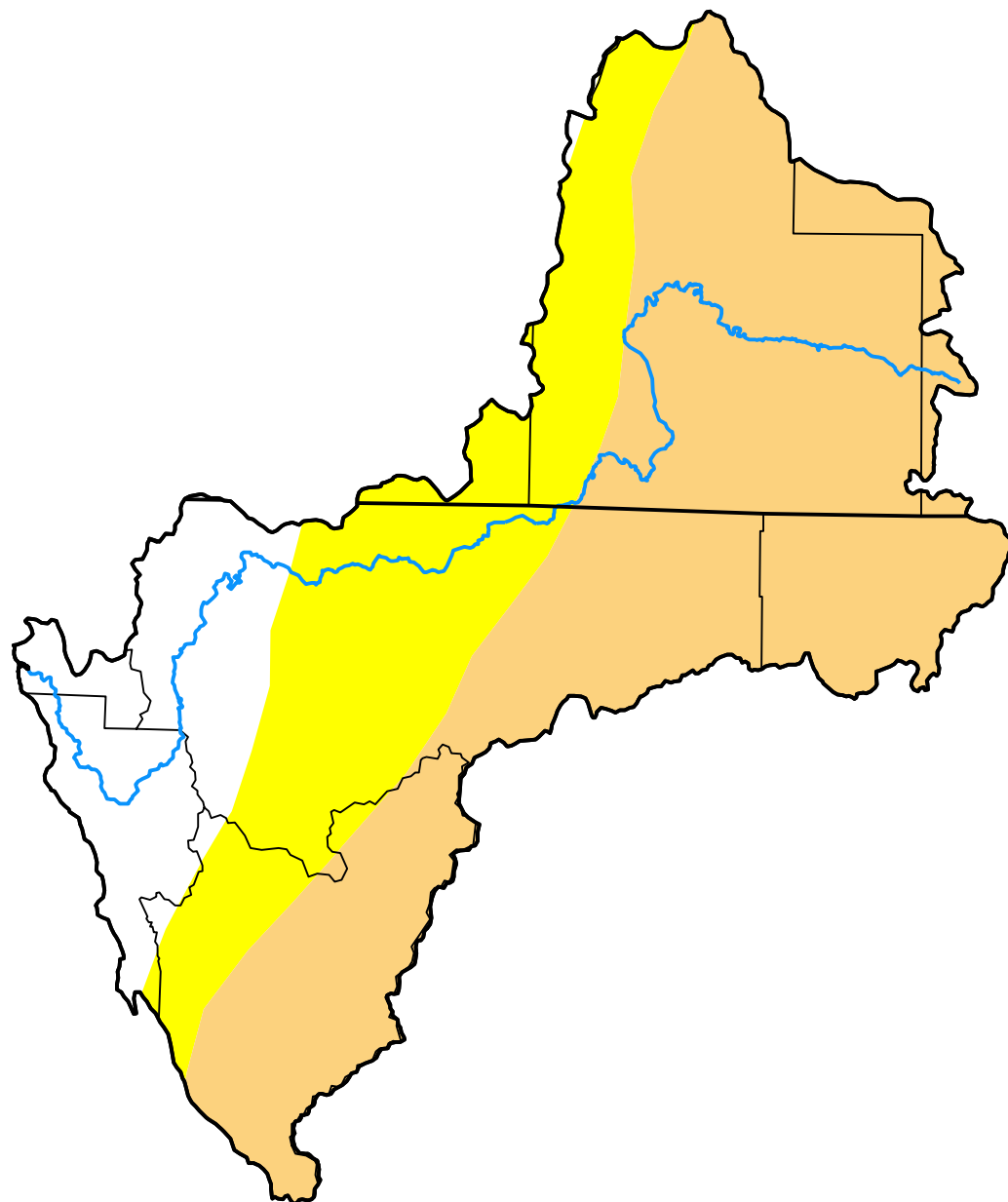


# U.S. Drought Monitor Klamath River Basin

**March 29, 2016**  
(Released Thursday, Mar. 31, 2016)  
Valid 8 a.m. EDT



*Drought Conditions (Percent Area)*

	None	D0-D4	D1-D4	D2-D4	D3-D4	D4
<b>Current</b>	15.06	84.94	57.28	0.00	0.00	0.00
<b>Last Week</b> <i>03-22-2016</i>	3.23	96.77	74.03	0.00	0.00	0.00
<b>3 Months Ago</b> <i>12-29-2015</i>	0.00	100.00	100.00	87.00	38.79	0.00
<b>Start of Calendar Year</b> <i>12-29-2015</i>	0.00	100.00	100.00	87.00	38.79	0.00
<b>Start of Water Year</b> <i>09-29-2015</i>	0.00	100.00	100.00	100.00	43.45	0.00
<b>One Year Ago</b> <i>03-31-2015</i>	0.00	100.00	98.92	93.68	43.45	0.00

**Intensity:**

None	D2 Severe Drought
D0 Abnormally Dry	D3 Extreme Drought
D1 Moderate Drought	D4 Exceptional Drought

*The Drought Monitor focuses on broad-scale conditions. Local conditions may vary. For more information on the Drought Monitor, go to <https://droughtmonitor.unl.edu/About.aspx>*

**Author:**

Brad Rippey  
U.S. Department of Agriculture



**droughtmonitor.unl.edu**