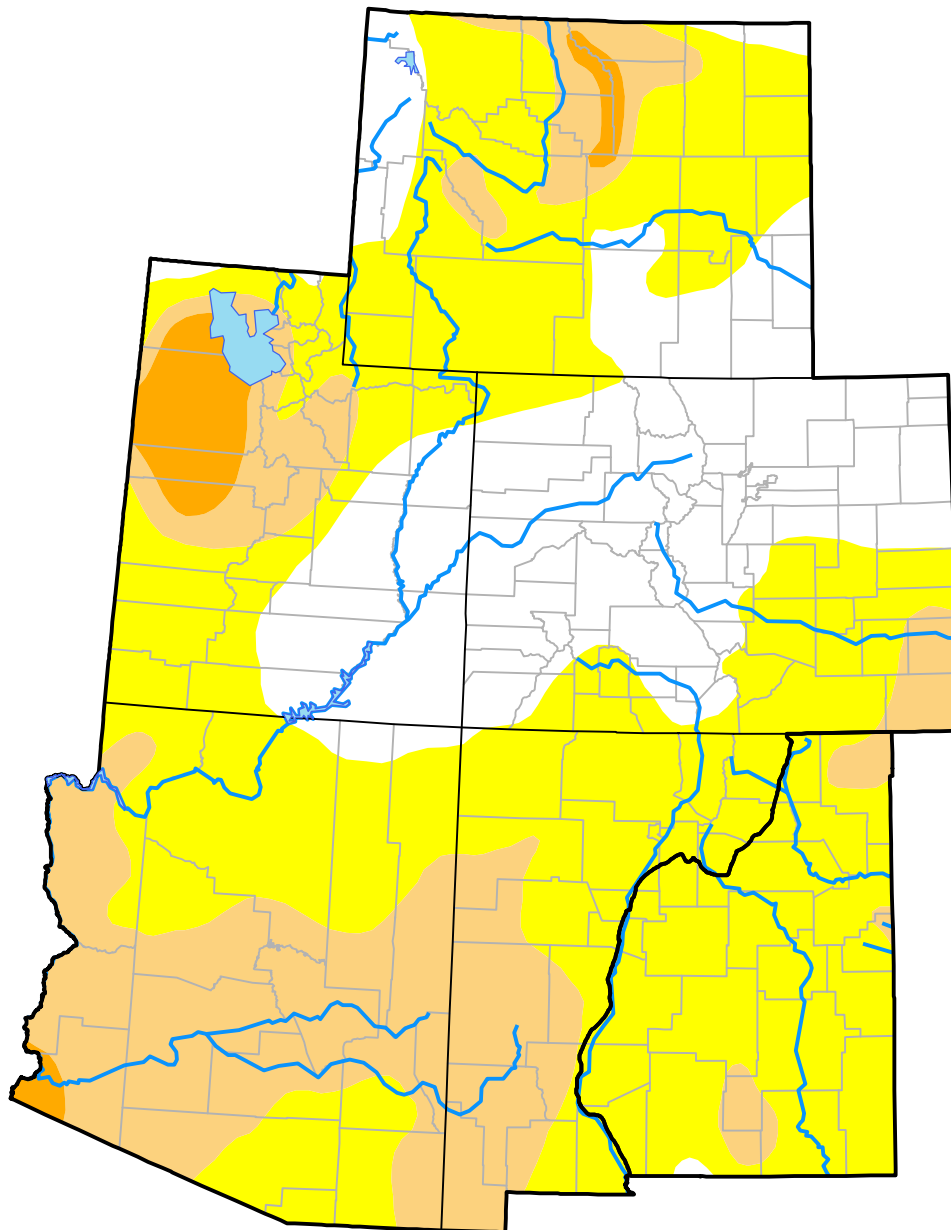


U.S. Drought Monitor

Intermountain West RDEWS

March 29, 2016
 (Released Thursday, Mar. 31, 2016)
 Valid 8 a.m. EDT



Drought Conditions (Percent Area)

	None	D0-D4	D1-D4	D2-D4	D3-D4	D4
Current	24.78	75.22	25.32	2.74	0.00	0.00
Last Week <i>03-24-2016</i>	25.57	74.43	24.16	2.74	0.00	0.00
3 Months Ago <i>12-31-2015</i>	49.11	50.89	15.99	3.91	0.00	0.00
Start of Calendar Year <i>12-31-2015</i>	49.11	50.89	15.99	3.91	0.00	0.00
Start of Water Year <i>10-01-2015</i>	43.05	56.95	25.84	5.07	0.00	0.00
One Year Ago <i>04-02-2015</i>	26.00	74.00	59.79	27.29	1.73	0.00

Intensity:



The Drought Monitor focuses on broad-scale conditions. Local conditions may vary. For more information on the Drought Monitor, go to <https://droughtmonitor.unl.edu/About.aspx>

Author:

Brad Rippey
 U.S. Department of Agriculture



droughtmonitor.unl.edu