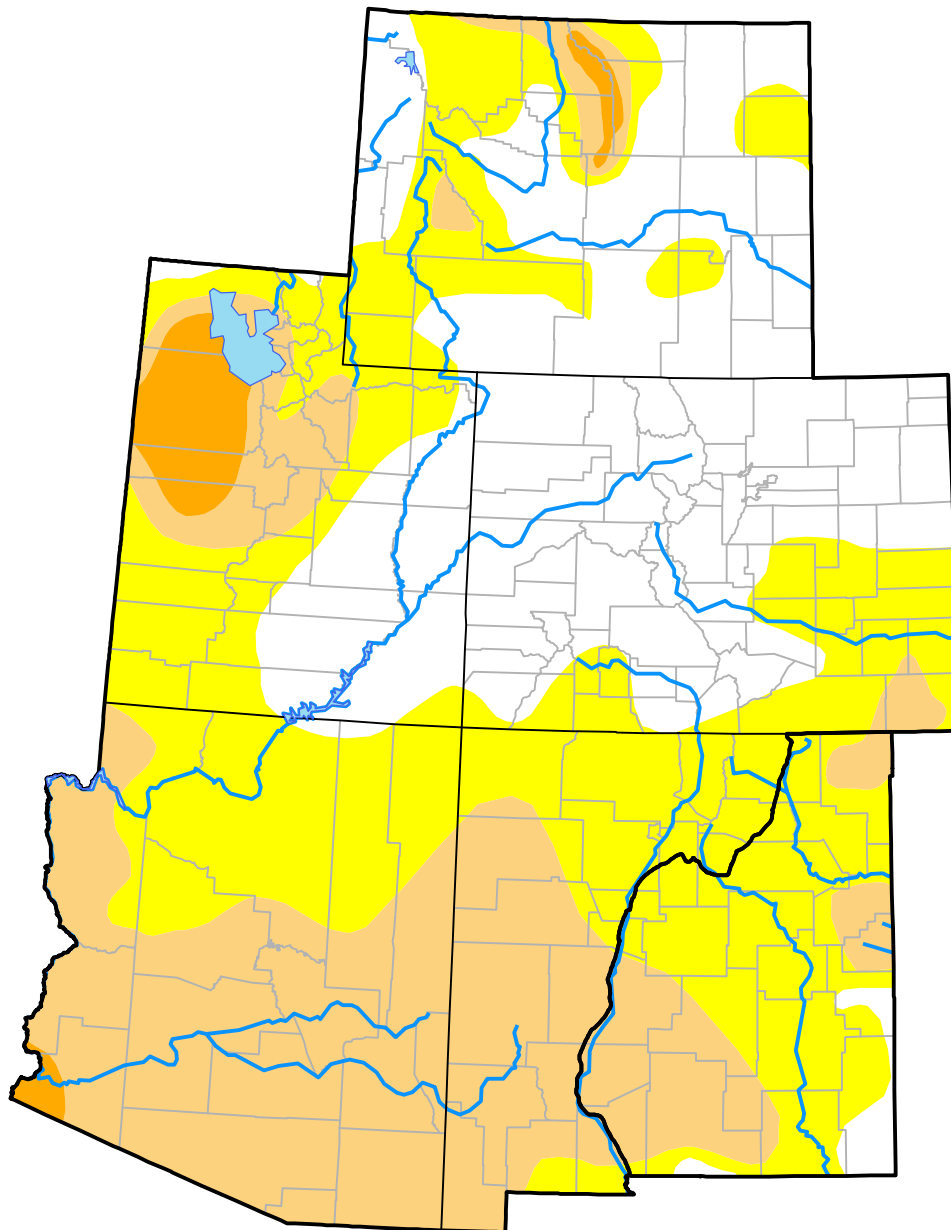


# U.S. Drought Monitor

## Intermountain West RDEWS

**April 19, 2016**  
 (Released Thursday, Apr. 21, 2016)  
 Valid 8 a.m. EDT



*Drought Conditions (Percent Area)*

	None	D0-D4	D1-D4	D2-D4	D3-D4	D4
<b>Current</b>	32.61	67.39	31.29	2.66	0.00	0.00
<b>Last Week</b> <i>04-14-2016</i>	31.81	68.19	32.49	2.79	0.00	0.00
<b>3 Months Ago</b> <i>01-21-2016</i>	58.71	41.29	10.79	2.07	0.00	0.00
<b>Start of Calendar Year</b> <i>12-31-2015</i>	49.11	50.89	15.99	3.91	0.00	0.00
<b>Start of Water Year</b> <i>10-01-2015</i>	43.05	56.95	25.84	5.07	0.00	0.00
<b>One Year Ago</b> <i>04-23-2015</i>	26.57	73.43	60.10	27.46	1.74	0.00

***Intensity:***

- None
- D0 Abnormally Dry
- D1 Moderate Drought
- D2 Severe Drought
- D3 Extreme Drought
- D4 Exceptional Drought

*The Drought Monitor focuses on broad-scale conditions. Local conditions may vary. For more information on the Drought Monitor, go to <https://droughtmonitor.unl.edu/About.aspx>*

***Author:***

Richard Tinker  
 CPC/NOAA/NWS/NCEP

