

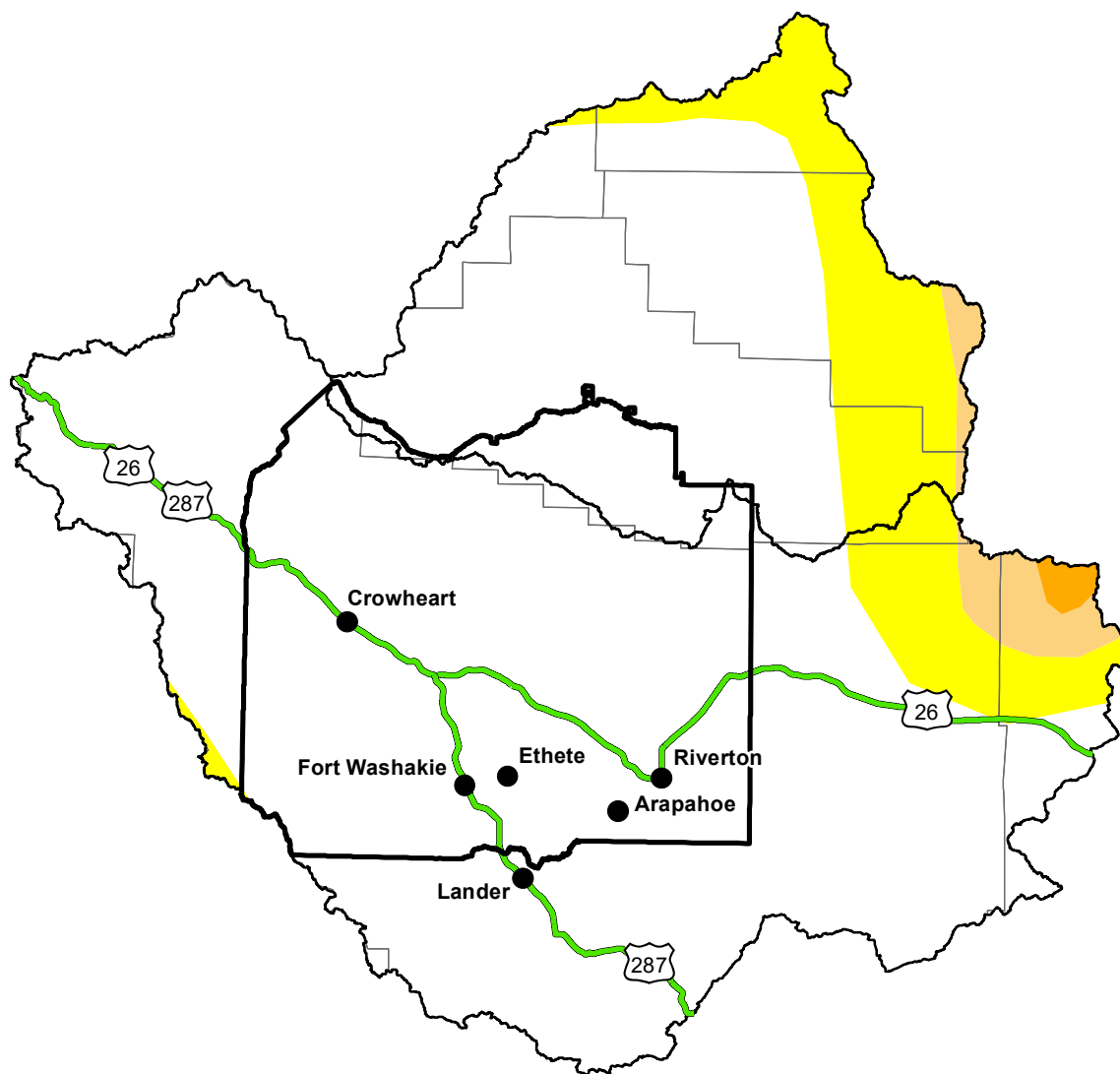
# U.S. Drought Monitor

## Wind River and Surrounding Area

May 10, 2016

(Released Thursday, May. 12, 2016)

Valid 8 a.m. EDT



Drought Conditions (Percent Area)

	None	D0-D4	D1-D4	D2-D4	D3-D4	D4
<b>Current</b>	0.00	0.00	0.00	0.00	0.00	0.00
<b>Last Week</b> 05-05-2016	0.00	0.00	0.00	0.00	0.00	0.00
<b>3 Months Ago</b> 02-11-2016	0.00	0.00	0.00	0.00	0.00	0.00
<b>Start of Calendar Year</b> 12-31-2015	0.00	0.00	0.00	0.00	0.00	0.00
<b>Start of Water Year</b> 10-01-2015	0.00	0.00	0.00	0.00	0.00	0.00
<b>One Year Ago</b> 05-14-2015	0.00	0.00	0.00	0.00	0.00	0.00

Note: Statistics are for the surrounding area including the reservation.

### Intensity:

None	D2 Severe Drought
D0 Abnormally Dry	D3 Extreme Drought
D1 Moderate Drought	D4 Exceptional Drought

The Drought Monitor focuses on broad-scale conditions. Local conditions may vary. For more information on the Drought Monitor, go to <https://droughtmonitor.unl.edu/About.aspx>

### Author:

Brian Fuchs  
National Drought Mitigation Center



<http://droughtmonitor.unl.edu/>