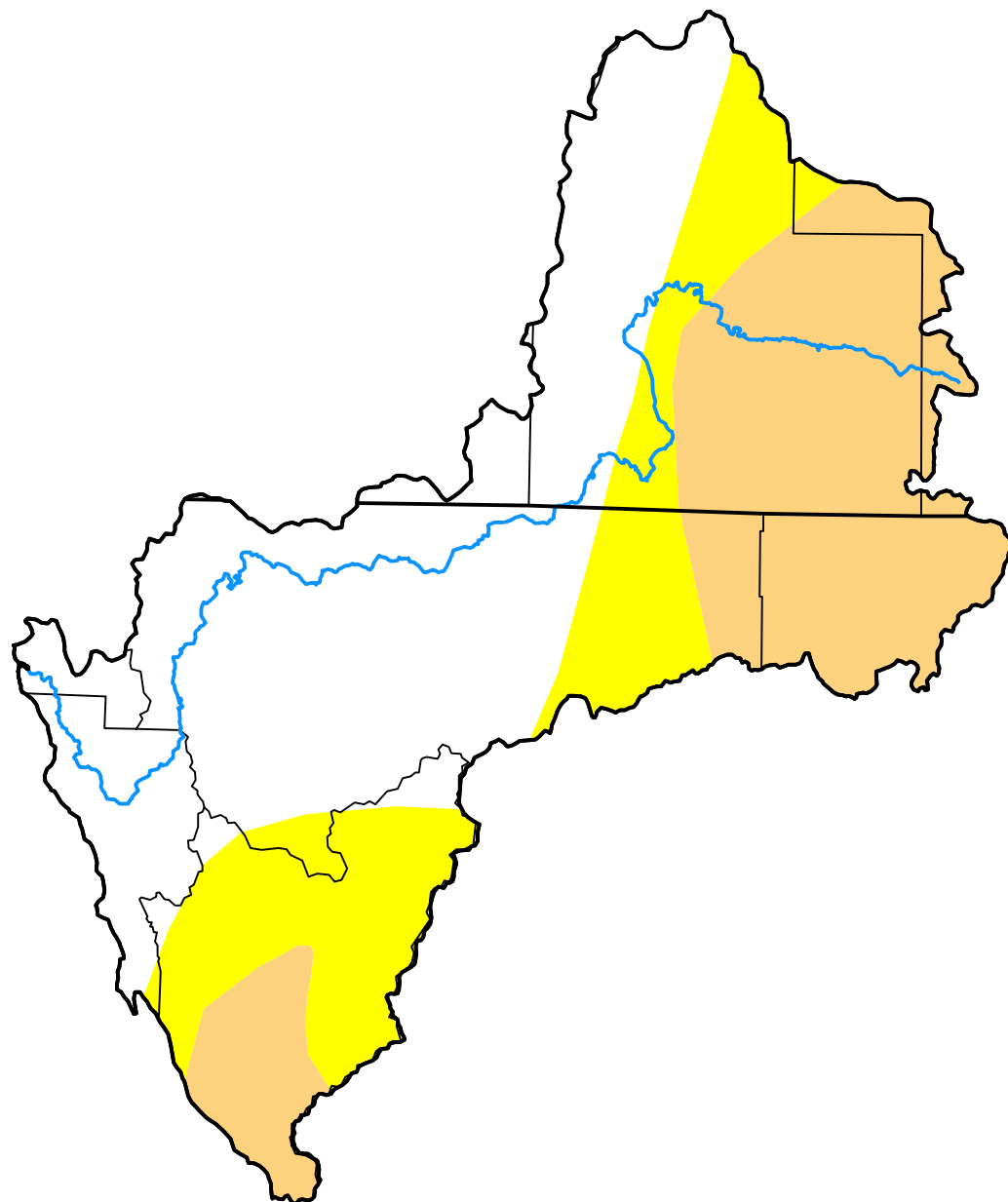


U.S. Drought Monitor Klamath River Basin

May 24, 2016
(Released Thursday, May. 26, 2016)
Valid 8 a.m. EDT



Drought Conditions (Percent Area)

	None	D0-D4	D1-D4	D2-D4	D3-D4	D4
Current	46.72	53.28	30.61	0.00	0.00	0.00
Last Week 05-17-2016	46.72	53.28	30.61	0.00	0.00	0.00
3 Months Ago 02-23-2016	0.23	99.77	91.19	51.95	0.00	0.00
Start of Calendar Year 12-29-2015	0.00	100.00	100.00	87.00	38.79	0.00
Start of Water Year 09-29-2015	0.00	100.00	100.00	100.00	43.45	0.00
One Year Ago 05-26-2015	0.00	100.00	100.00	98.27	43.45	1.40

Intensity:

None	D2 Severe Drought
D0 Abnormally Dry	D3 Extreme Drought
D1 Moderate Drought	D4 Exceptional Drought

The Drought Monitor focuses on broad-scale conditions. Local conditions may vary. For more information on the Drought Monitor, go to <https://droughtmonitor.unl.edu/About.aspx>

Author:

David Simeral
Western Regional Climate Center



droughtmonitor.unl.edu