

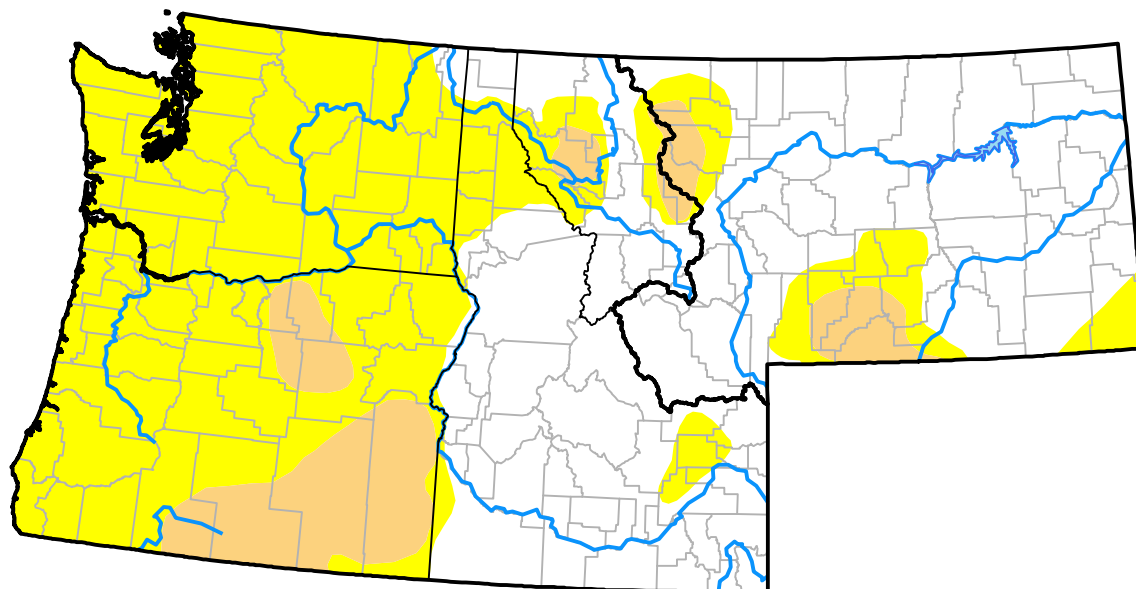
Northwest RDEWS and Surrounding Areas

(Released Thursday, Jun. 9, 2016)

10:00 a.m. EDT

Drought Conditions (Percent Area)

	None	D0	D1	D2	D3	D4
Current	47.47	42.40	10.13	0.00	0.00	0.00
Last Week 06-02-2016	61.59	29.66	8.76	0.00	0.00	0.00
3 Months Ago 03-10-2016	40.69	38.87	11.07	9.36	0.00	0.00
Start of Calendar Year 12-31-2015	34.29	16.53	19.74	18.17	11.27	0.00
Start of Water Year 10-01-2015	11.37	14.69	11.55	21.78	40.61	0.00
One Year Ago 06-11-2015	27.89	23.12	23.06	15.63	10.31	0.00



Intensity:

 None	 D2 Severe Drought
 D0 Abnormally Dry	 D3 Extreme Drought
 D1 Moderate Drought	 D4 Exceptional Drought

The Drought Monitor focuses on broad-scale conditions. Local conditions may vary. For more information on the Drought Monitor, go to <https://droughtmonitor.unl.edu/About.aspx>

Author:

Deborah Bathke
National Drought Mitigation Center

