

# U.S. Drought Monitor Tennessee Watershed

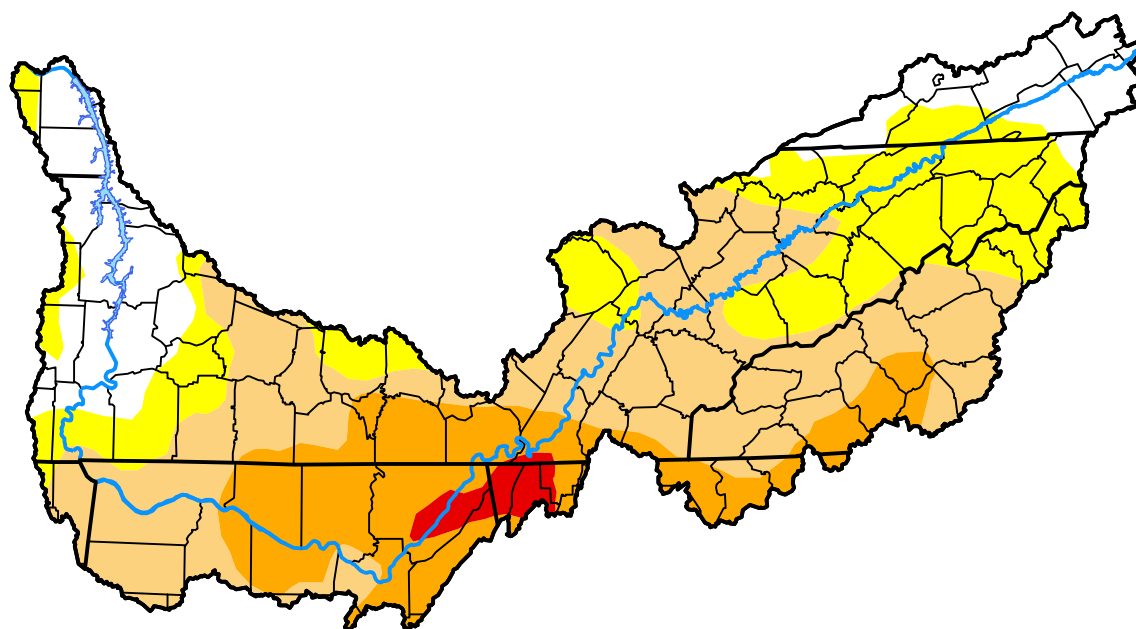
**June 28, 2016**

*(Released Thursday, Jun. 30, 2016)*

Valid 8 a.m. EDT

## Drought Conditions (Percent Area)

	None	D0-D4	D1-D4	D2-D4	D3-D4	D4
<b>Current</b>	17.15	82.85	58.83	20.99	2.00	0.00
<b>Last Week</b> <i>06-23-2016</i>	13.63	86.37	64.78	24.09	0.00	0.00
<b>3 Months Ago</b> <i>03-31-2016</i>	95.55	4.45	0.00	0.00	0.00	0.00
<b>Start of Calendar Year</b> <i>12-31-2015</i>	100.00	0.00	0.00	0.00	0.00	0.00
<b>Start of Water Year</b> <i>10-01-2015</i>	73.40	26.60	2.79	0.00	0.00	0.00
<b>One Year Ago</b> <i>07-02-2015</i>	30.06	69.94	12.27	0.00	0.00	0.00



## Intensity:

 None	 D2 Severe Drought
 D0 Abnormally Dry	 D3 Extreme Drought
 D1 Moderate Drought	 D4 Exceptional Drought

*The Drought Monitor focuses on broad-scale conditions. Local conditions may vary. For more information on the Drought Monitor, go to <https://droughtmonitor.unl.edu/About.aspx>*

## Author:

Eric Luebehusen  
U.S. Department of Agriculture



**droughtmonitor.unl.edu**