

U.S. Drought Monitor

Lower Mississippi Watershed

June 28, 2016

(Released Thursday, Jun. 30, 2016)

Valid 8 a.m. EDT

Drought Conditions (Percent Area)

	None	D0	D1	D2	D3	D4
Current	70.61	20.80	8.60	0.00	0.00	0.00
Last Week 06-23-2016	76.04	18.12	5.84	0.00	0.00	0.00
3 Months Ago 03-31-2016	96.97	3.03	0.00	0.00	0.00	0.00
Start of Calendar Year 12-31-2015	100.00	0.00	0.00	0.00	0.00	0.00
Start of Water Year 10-01-2015	23.06	20.83	25.62	24.69	5.80	0.00
One Year Ago 07-02-2015	99.03	0.97	0.00	0.00	0.00	0.00

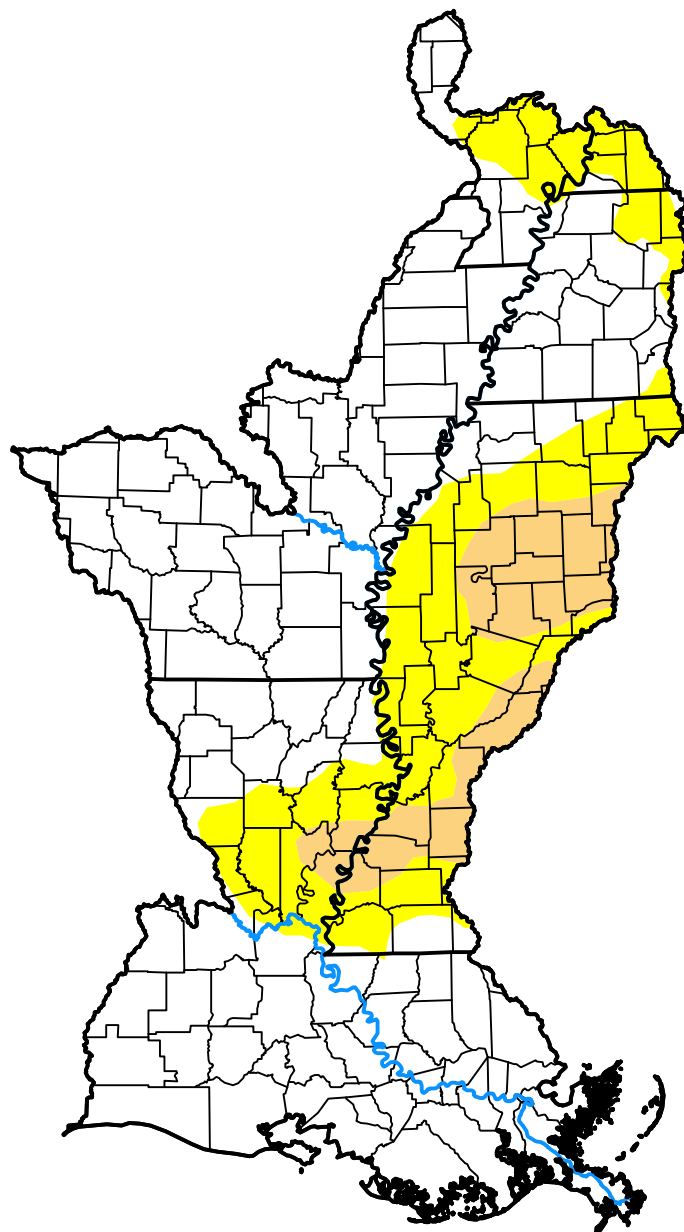
Intensity:

 None	 D2 Severe Drought
 D0 Abnormally Dry	 D3 Extreme Drought
 D1 Moderate Drought	 D4 Exceptional Drought

The Drought Monitor focuses on broad-scale conditions. Local conditions may vary. For more information on the Drought Monitor, go to <https://droughtmonitor.unl.edu/About.aspx>

Author:

Eric Luebehusen
U.S. Department of Agriculture



droughtmonitor.unl.edu