

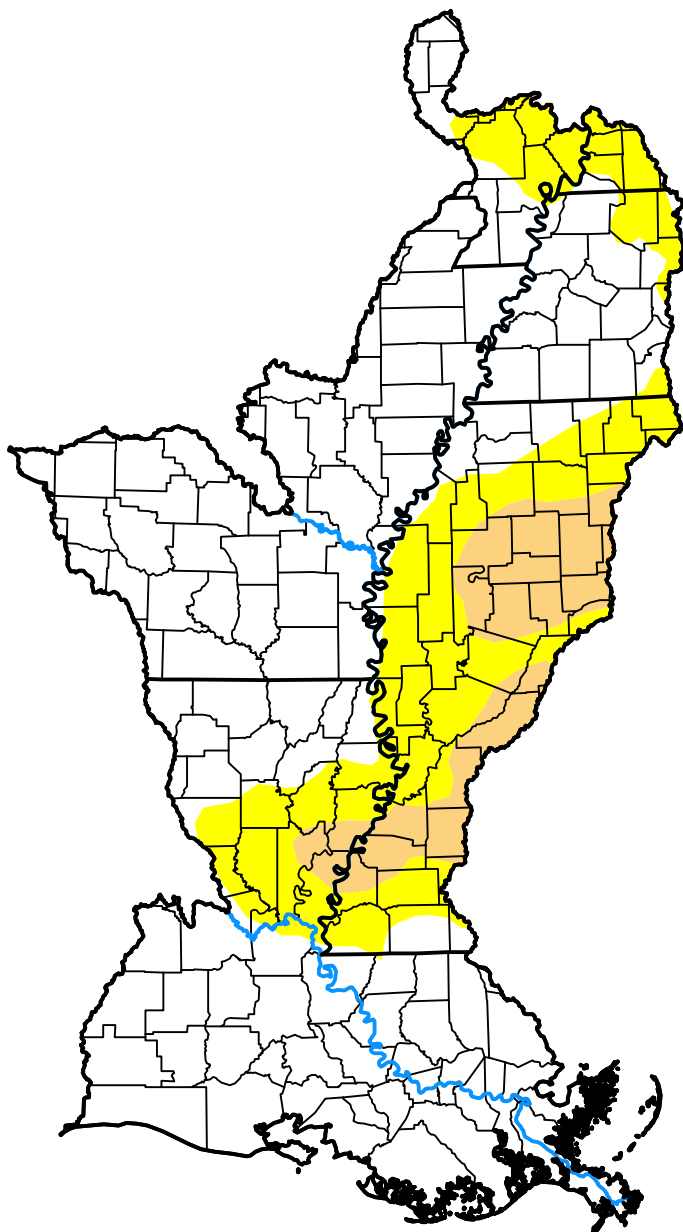
# U.S. Drought Monitor

## Lower Mississippi Watershed

June 28, 2016

(Released Thursday, Jun. 30, 2016)

Valid 8 a.m. EDT



Drought Conditions (Percent Area)

	None	D0-D4	D1-D4	D2-D4	D3-D4	D4
<b>Current</b>	70.61	29.39	8.60	0.00	0.00	0.00
<b>Last Week</b> 06-23-2016	76.04	23.96	5.84	0.00	0.00	0.00
<b>3 Months Ago</b> 03-31-2016	96.97	3.03	0.00	0.00	0.00	0.00
<b>Start of Calendar Year</b> 12-31-2015	100.00	0.00	0.00	0.00	0.00	0.00
<b>Start of Water Year</b> 10-01-2015	23.06	76.94	56.11	30.48	5.80	0.00
<b>One Year Ago</b> 07-02-2015	99.03	0.97	0.00	0.00	0.00	0.00

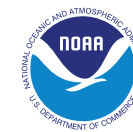
### Intensity:

None	D2 Severe Drought
D0 Abnormally Dry	D3 Extreme Drought
D1 Moderate Drought	D4 Exceptional Drought

The Drought Monitor focuses on broad-scale conditions. Local conditions may vary. For more information on the Drought Monitor, go to <https://droughtmonitor.unl.edu/About.aspx>

### Author:

Eric Luebehusen  
U.S. Department of Agriculture



[droughtmonitor.unl.edu](https://droughtmonitor.unl.edu)