

U.S. Drought Monitor

Lower Colorado Watershed

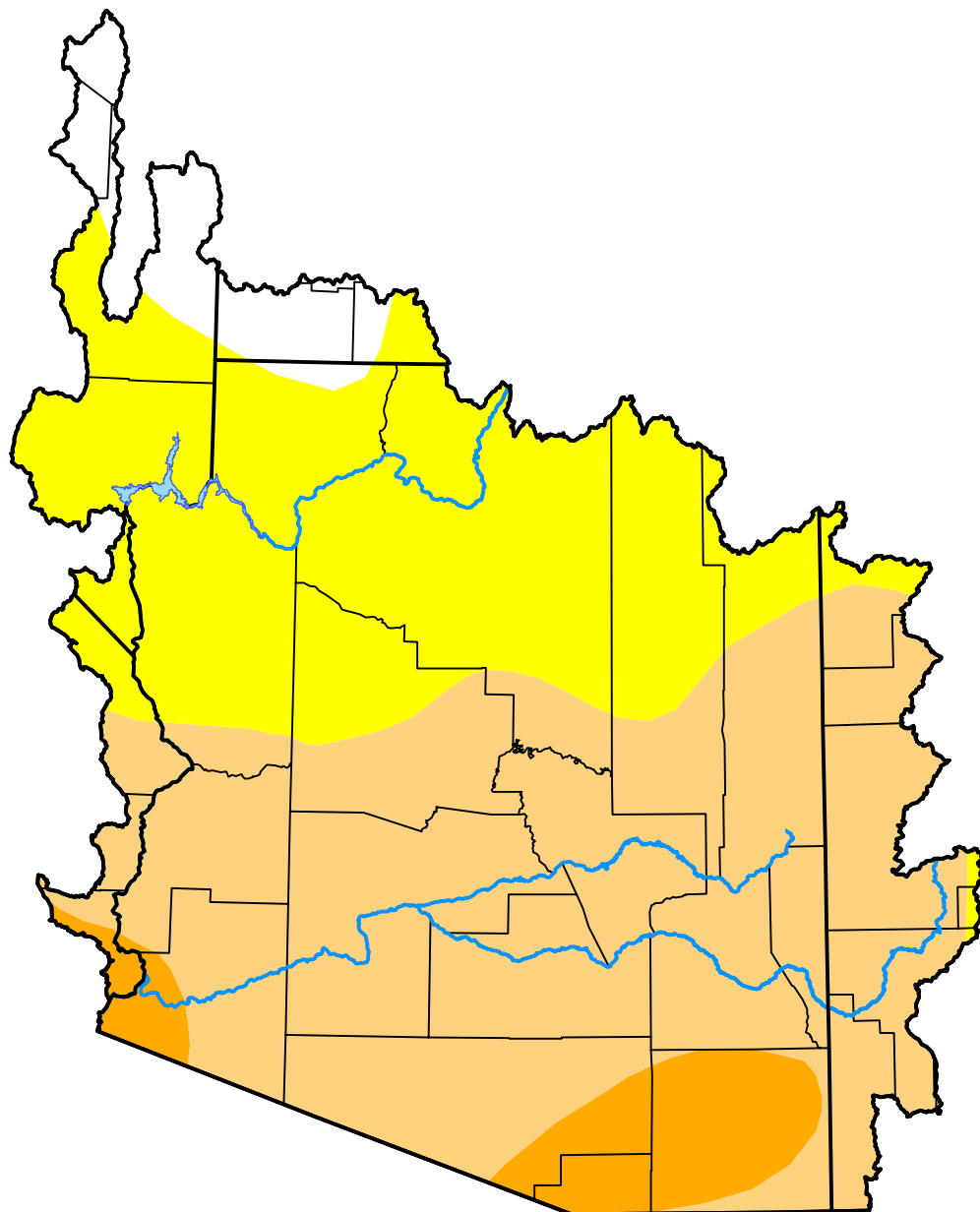
July 19, 2016

(Released Thursday, Jul. 21, 2016)

Valid 8 a.m. EDT

Drought Conditions (Percent Area)

	None	D0	D1	D2	D3	D4
Current	5.11	35.82	52.17	6.90	0.00	0.00
Last Week <i>07-14-2016</i>	5.15	35.77	52.17	6.90	0.00	0.00
3 Months Ago <i>04-21-2016</i>	0.00	27.97	69.66	2.37	0.00	0.00
Start of Calendar Year <i>12-31-2015</i>	14.75	51.29	32.48	1.48	0.00	0.00
Start of Water Year <i>10-01-2015</i>	10.68	26.70	58.37	4.25	0.00	0.00
One Year Ago <i>07-23-2015</i>	5.89	15.34	69.10	9.66	0.00	0.00



Intensity:

- None
- D0 Abnormally Dry
- D1 Moderate Drought
- D2 Severe Drought
- D3 Extreme Drought
- D4 Exceptional Drought

The Drought Monitor focuses on broad-scale conditions. Local conditions may vary. For more information on the Drought Monitor, go to <https://droughtmonitor.unl.edu/About.aspx>

Author:

Chris Fenimore
NCEI/NESDIS/NOAA



droughtmonitor.unl.edu