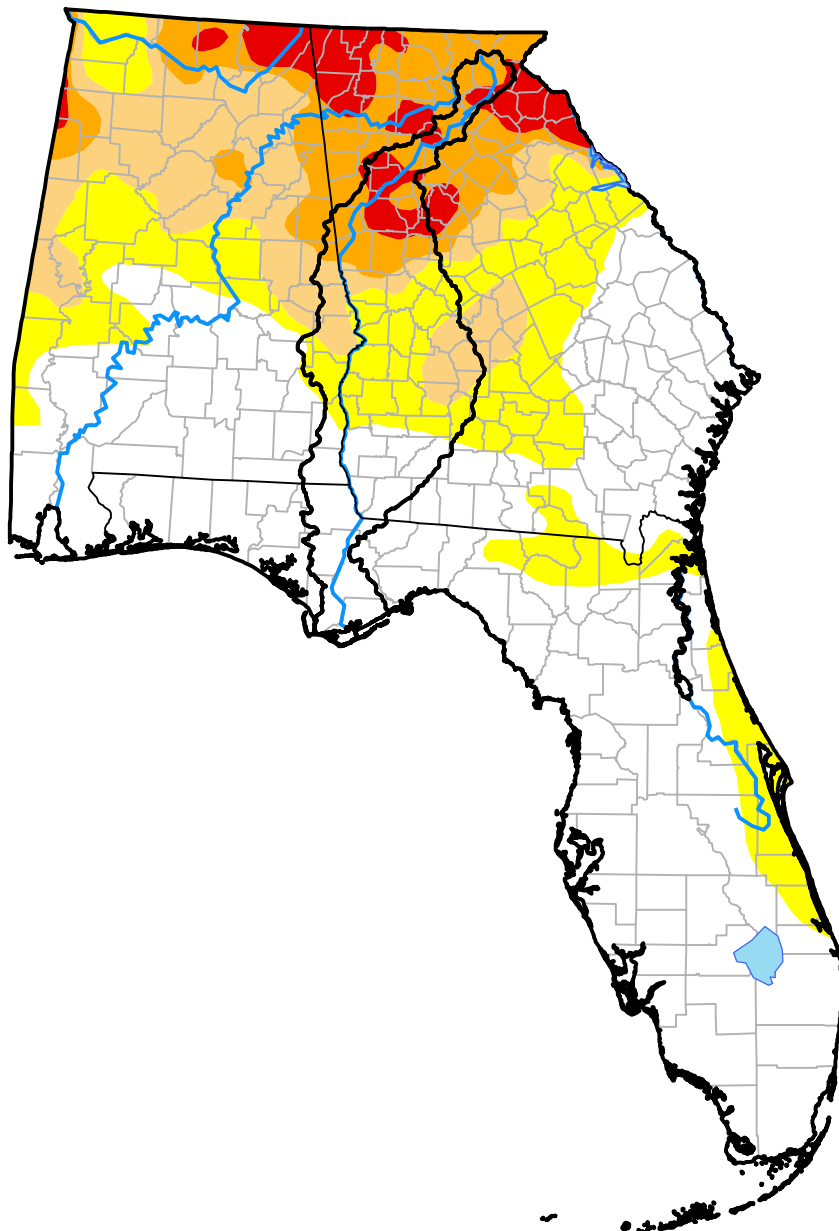


U.S. Drought Monitor ACF River Basin RDEWS

July 26, 2016
(Released Thursday, Jul. 28, 2016)
Valid 8 a.m. EDT



Drought Conditions (Percent Area)

	None	D0-D4	D1-D4	D2-D4	D3-D4	D4
Current	30.96	69.04	39.24	24.64	8.21	0.00
Last Week 07-21-2016	30.56	69.44	34.68	24.64	7.35	0.00
3 Months Ago 04-28-2016	90.49	9.51	5.39	0.00	0.00	0.00
Start of Calendar Year 12-31-2015	100.00	0.00	0.00	0.00	0.00	0.00
Start of Water Year 10-01-2015	76.12	23.88	5.47	0.00	0.00	0.00
One Year Ago 07-30-2015	56.78	43.22	1.60	0.00	0.00	0.00

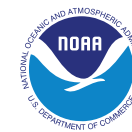
Intensity:

None	D2 Severe Drought
D0 Abnormally Dry	D3 Extreme Drought
D1 Moderate Drought	D4 Exceptional Drought

The Drought Monitor focuses on broad-scale conditions. Local conditions may vary. For more information on the Drought Monitor, go to <https://droughtmonitor.unl.edu/About.aspx>

Author:

Brad Rippey
U.S. Department of Agriculture



droughtmonitor.unl.edu