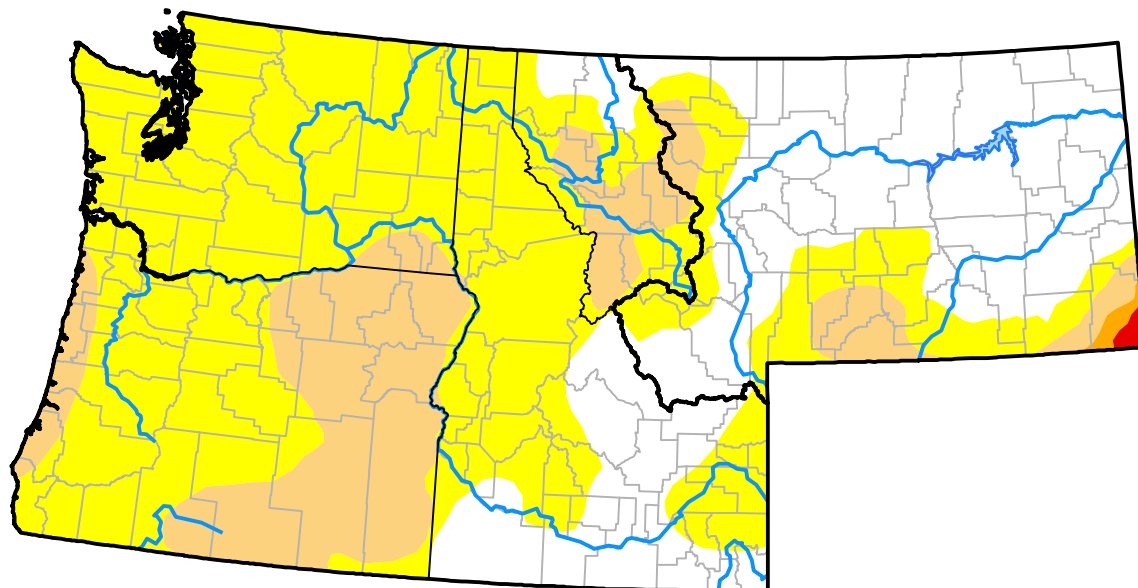


Northwest RDEWS and Surrounding Areas

10:00 a.m. EDT

Drought Conditions (Percent Area)

	None	D0-D4	D1-D4	D2-D4	D3-D4	D4
Current	30.73	69.27	18.38	0.42	0.17	0.00
Last Week 07-21-2016	30.95	69.05	18.38	0.42	0.17	0.00
3 Months Ago 04-28-2016	76.60	23.40	9.34	0.25	0.00	0.00
Start of Calendar Year 12-31-2015	34.29	65.71	49.19	29.44	11.27	0.00
Start of Water Year 10-01-2015	11.37	88.63	73.94	62.39	40.61	0.00
One Year Ago 07-30-2015	13.75	86.25	73.23	61.30	27.17	0.00



Intensity:

None	D2 Severe Drought
D0 Abnormally Dry	D3 Extreme Drought
D1 Moderate Drought	D4 Exceptional Drought

The Drought Monitor focuses on broad-scale conditions. Local conditions may vary. For more information on the Drought Monitor, go to <https://droughtmonitor.unl.edu/About.aspx>

Author:

Brad Rippey
U.S. Department of Agriculture

