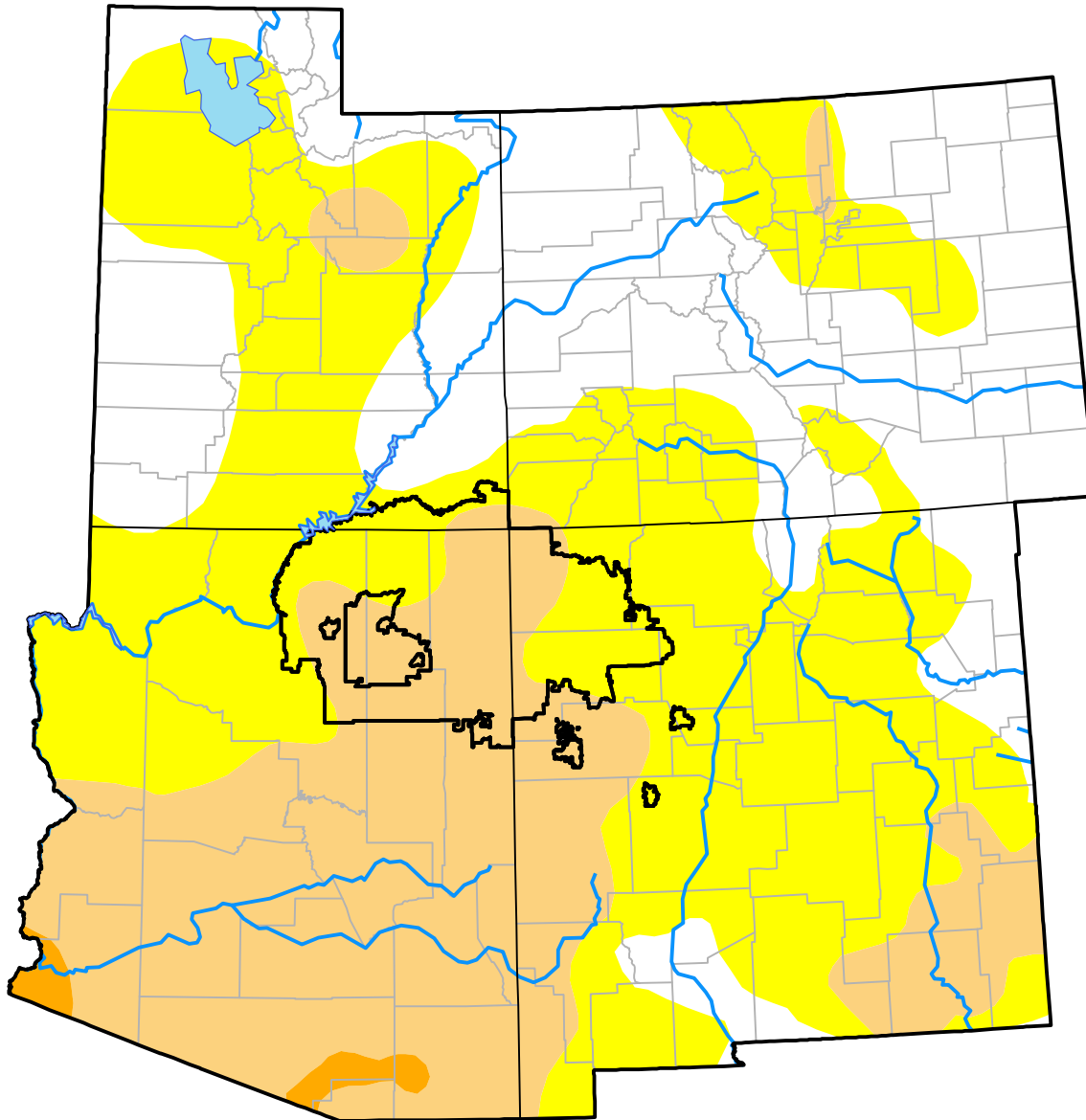


U.S. Drought Monitor Navajo RDEWS

August 16, 2016
(Released Thursday, Aug. 18, 2016)
Valid 8 a.m. EDT



Drought Conditions (Percent Area)

	None	D0-D4	D1-D4	D2-D4	D3-D4	D4
Current	0.00	100.00	55.02	0.00	0.00	0.00
Last Week <i>08-11-2016</i>	0.00	100.00	55.02	0.00	0.00	0.00
3 Months Ago <i>05-19-2016</i>	0.06	99.94	20.67	0.00	0.00	0.00
Start of Calendar Year <i>12-31-2015</i>	5.08	94.92	0.00	0.00	0.00	0.00
Start of Water Year <i>10-01-2015</i>	3.81	96.19	63.61	0.00	0.00	0.00
One Year Ago <i>08-20-2015</i>	3.81	96.19	63.93	0.00	0.00	0.00

Intensity:

- None
- D0 Abnormally Dry
- D1 Moderate Drought
- D2 Severe Drought
- D3 Extreme Drought
- D4 Exceptional Drought

The Drought Monitor focuses on broad-scale conditions. Local conditions may vary. For more information on the Drought Monitor, go to <https://droughtmonitor.unl.edu/About.aspx>

Author:

David Miskus
NOAA/NWS/NCEP/CPC

