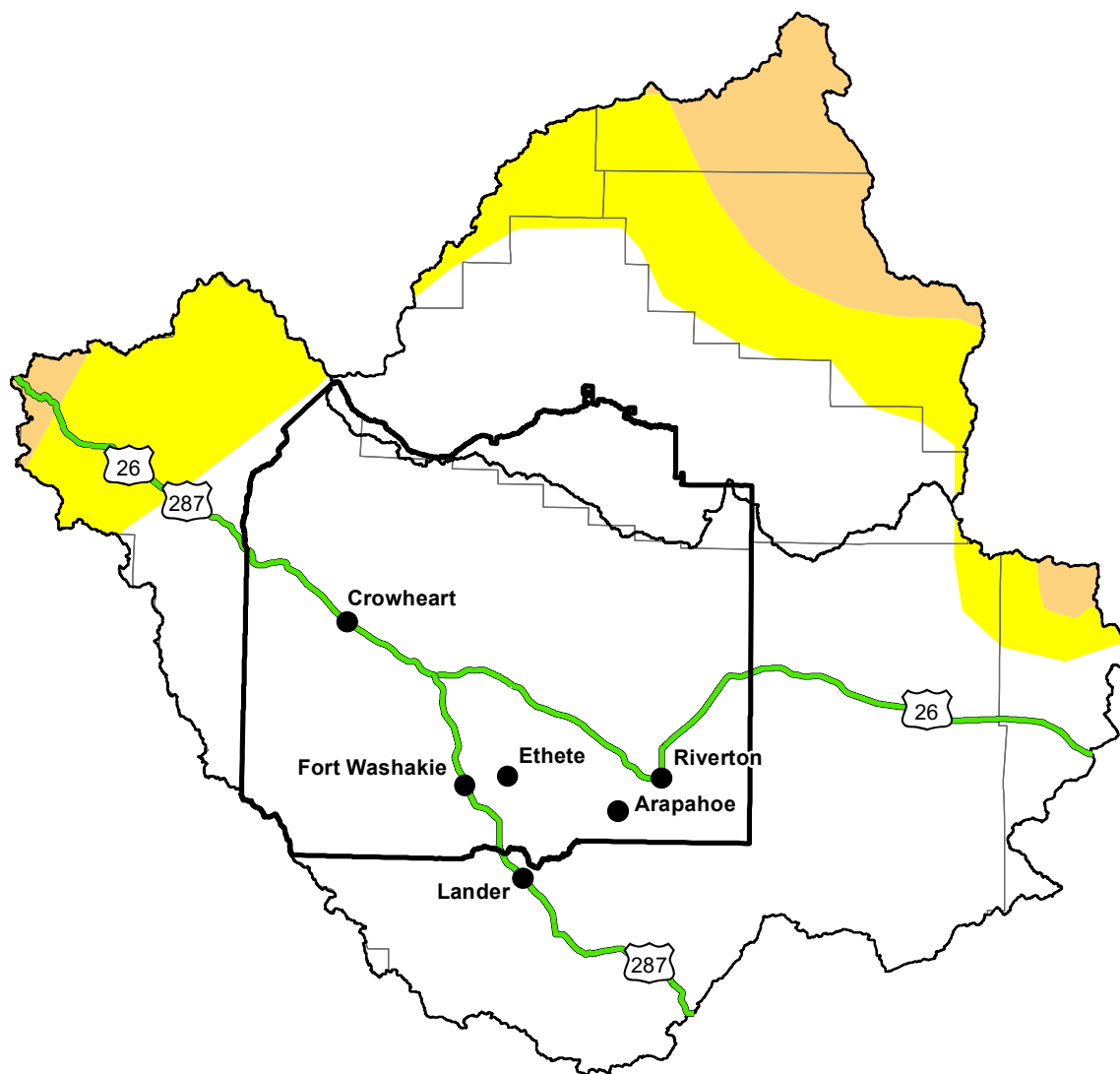


U.S. Drought Monitor

Wind River and Surrounding Area

September 6, 2016
 (Released Thursday, Sep. 8, 2016)
 Valid 8 a.m. EDT



Drought Conditions (Percent Area)

	None	D0-D4	D1-D4	D2-D4	D3-D4	D4
Current	0.00	0.00	0.00	0.00	0.00	0.00
Last Week <i>09-01-2016</i>	0.00	0.00	0.00	0.00	0.00	0.00
3 Months Ago <i>06-09-2016</i>	0.00	0.00	0.00	0.00	0.00	0.00
Start of Calendar Year <i>12-31-2015</i>	0.00	0.00	0.00	0.00	0.00	0.00
Start of Water Year <i>10-01-2015</i>	0.00	0.00	0.00	0.00	0.00	0.00
One Year Ago <i>09-10-2015</i>	0.00	0.00	0.00	0.00	0.00	0.00

Note: Statistics are for the surrounding area including the reservation.

Intensity:

None	D2 Severe Drought
D0 Abnormally Dry	D3 Extreme Drought
D1 Moderate Drought	D4 Exceptional Drought

The Drought Monitor focuses on broad-scale conditions. Local conditions may vary. For more information on the Drought Monitor, go to <https://droughtmonitor.unl.edu/About.aspx>

Author:

David Simeral
 Western Regional Climate Center



<http://droughtmonitor.unl.edu/>