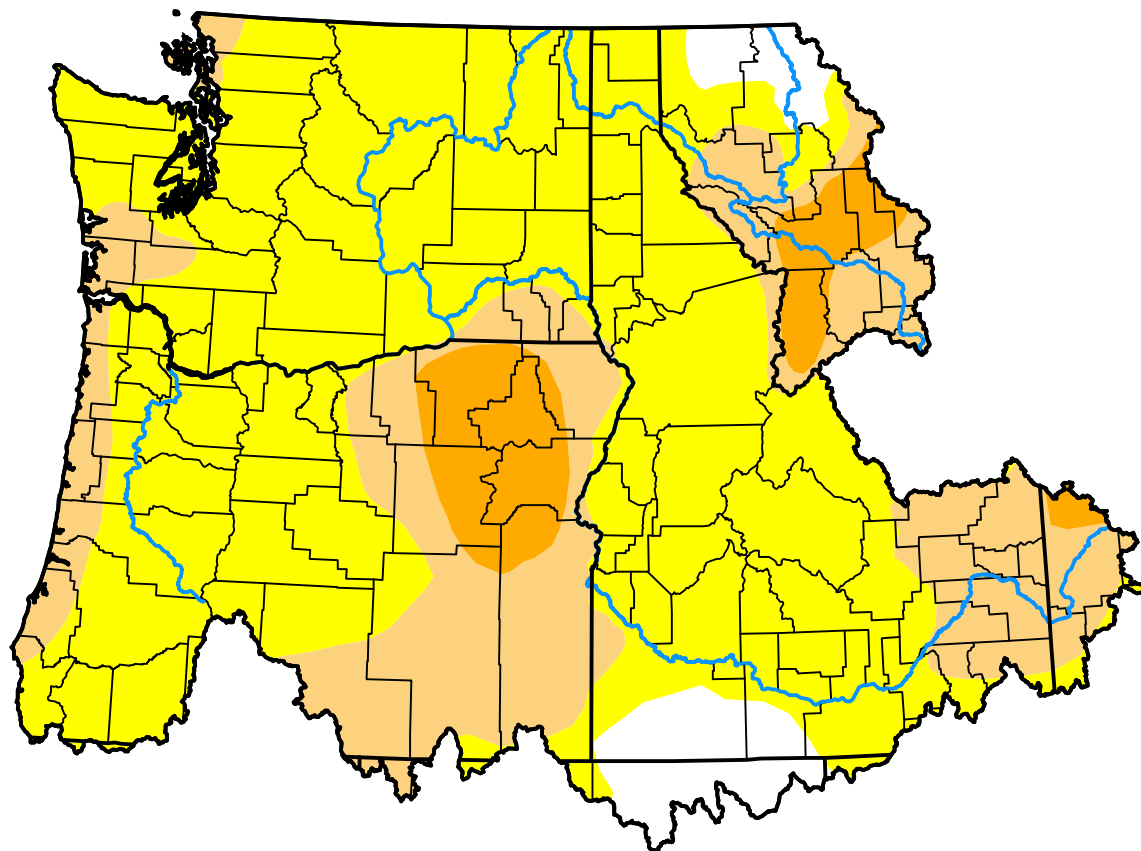


# U.S. Drought Monitor Pacific Northwest Watershed

**September 13, 2016**  
(Released Thursday, Sep. 15, 2016)  
Valid 8 a.m. EDT



*Drought Conditions (Percent Area)*

	None	D0-D4	D1-D4	D2-D4	D3-D4	D4
<b>Current</b>	5.10	94.90	31.12	6.70	0.00	0.00
<b>Last Week</b> <i>09-08-2016</i>	6.57	93.43	29.04	6.61	0.00	0.00
<b>3 Months Ago</b> <i>06-16-2016</i>	29.04	70.96	16.73	0.00	0.00	0.00
<b>Start of Calendar Year</b> <i>12-31-2015</i>	24.34	75.66	62.19	38.34	14.30	0.00
<b>Start of Water Year</b> <i>10-01-2015</i>	0.03	99.97	94.08	81.91	55.22	0.00
<b>One Year Ago</b> <i>09-17-2015</i>	0.03	99.97	96.12	82.07	55.22	0.00

**Intensity:**

None	D2 Severe Drought
D0 Abnormally Dry	D3 Extreme Drought
D1 Moderate Drought	D4 Exceptional Drought

*The Drought Monitor focuses on broad-scale conditions. Local conditions may vary. For more information on the Drought Monitor, go to <https://droughtmonitor.unl.edu/About.aspx>*

**Author:**

Eric Luebehusen  
U.S. Department of Agriculture



**droughtmonitor.unl.edu**