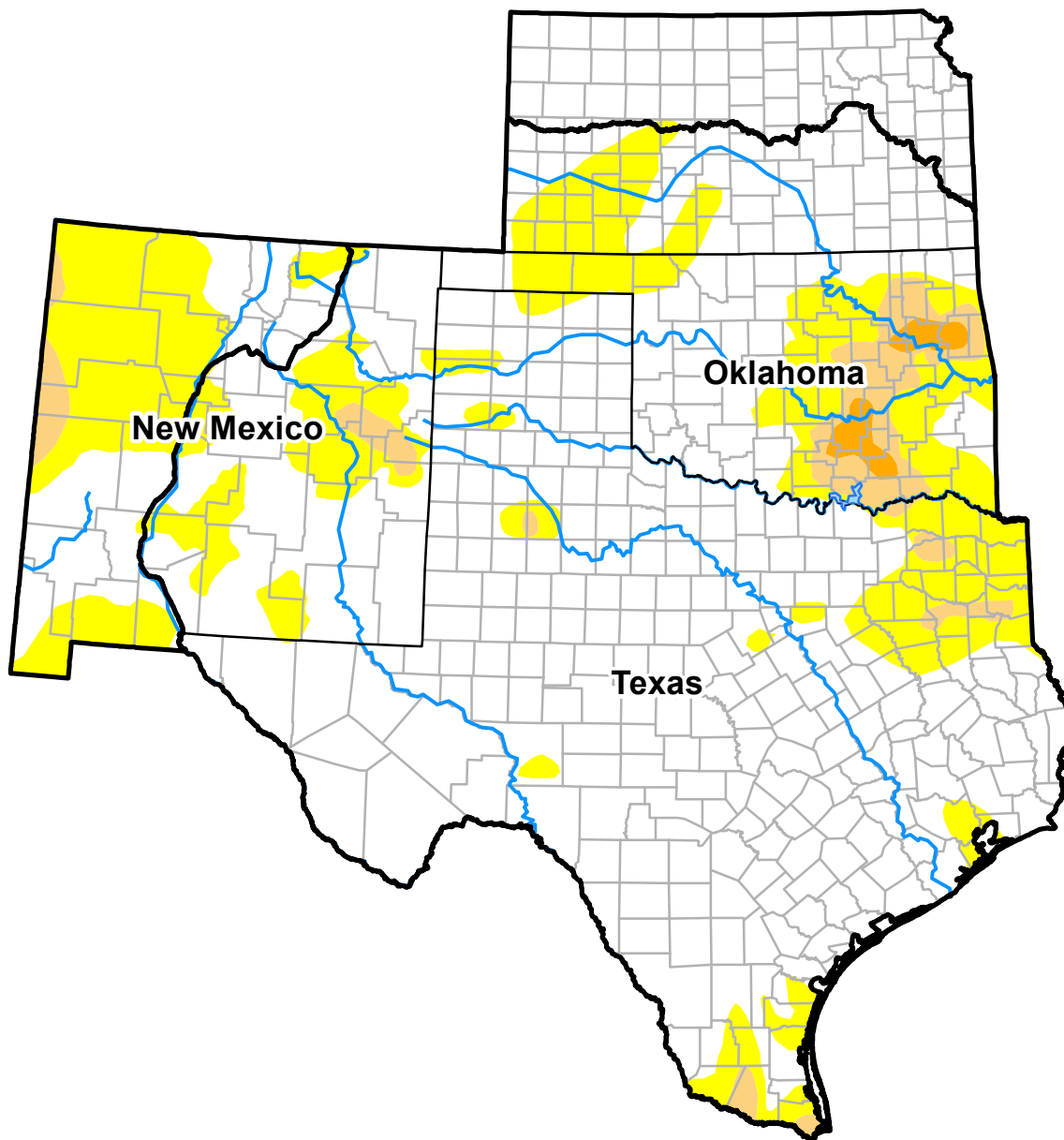


U.S. Drought Monitor

Southern Plains RDEWS

October 4, 2016
 (Released Thursday, Oct. 6, 2016)

Valid 8 a.m. EDT



Drought Conditions (Percent Area)

	None	D0	D1	D2	D3	D4
Current	77.27	18.23	3.68	0.82	0.00	0.00
Last Week <i>09-27-2016</i>	85.87	10.28	3.37	0.48	0.00	0.00
3 Months Ago <i>07-05-2016</i>	74.79	20.37	4.84	0.00	0.00	0.00
Start of Calendar Year <i>12-29-2015</i>	96.54	3.46	0.00	0.00	0.00	0.00
Start of Water Year <i>09-27-2016</i>	85.87	10.28	3.37	0.48	0.00	0.00
One Year Ago <i>10-06-2015</i>	46.21	20.91	16.59	9.93	6.36	0.00

Intensity:

- D0 Abnormally Dry
- D1 Moderate Drought
- D2 Severe Drought
- D3 Extreme Drought
- D4 Exceptional Drought

The Drought Monitor focuses on broad-scale conditions. Local conditions may vary. See accompanying text summary for forecast statements.

Author:
 Brian Fuchs
 National Drought Mitigation Center

