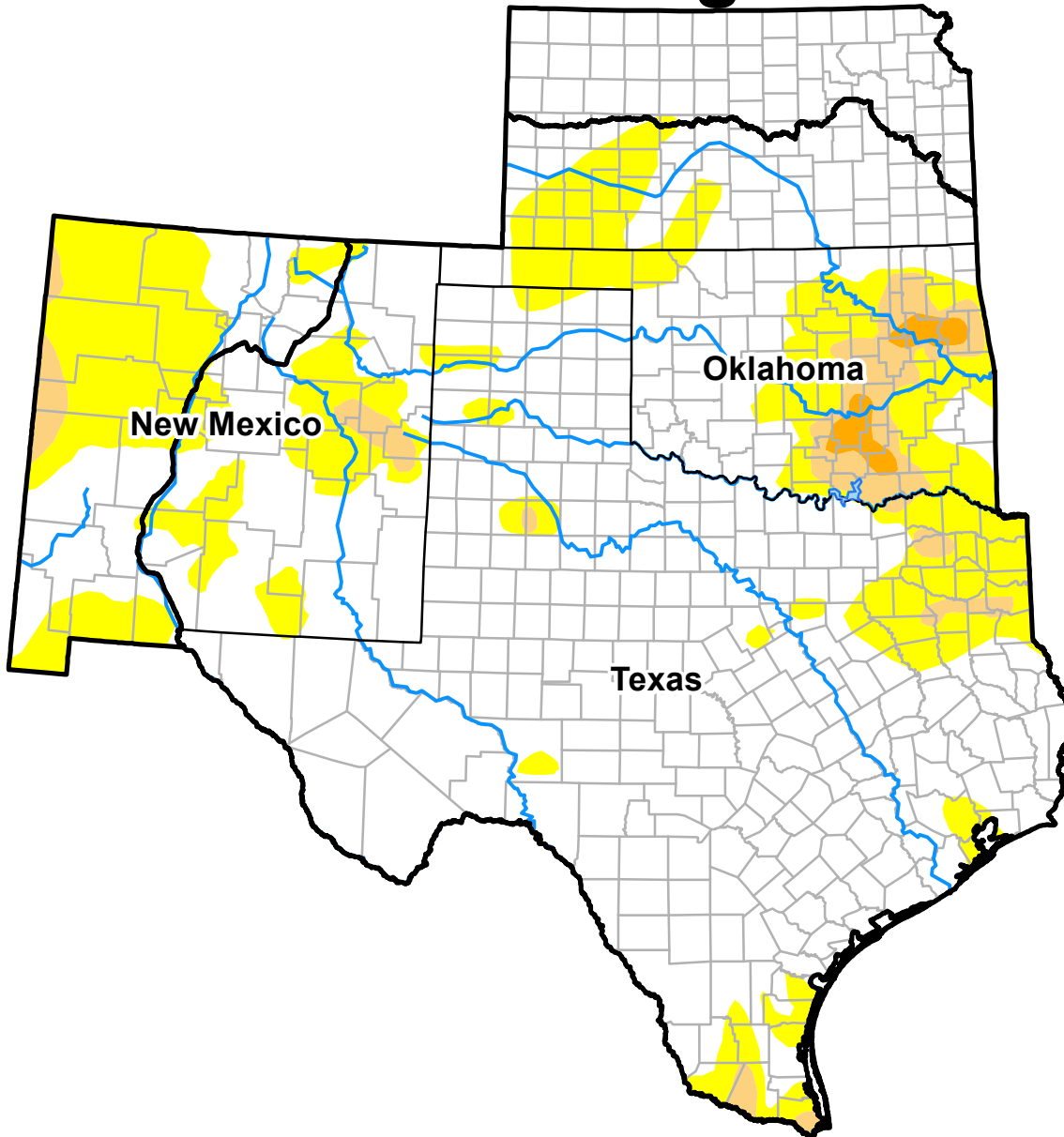


U.S. Drought Monitor

Southern Plains RDEWS and Surrounding Areas

October 4, 2016
 (Released Thursday, Oct. 6, 2016)
 Valid 8 a.m. EDT



Drought Conditions (Percent Area)

	None	D0	D1	D2	D3	D4
Current	75.01	20.81	3.51	0.67	0.00	0.00
Last Week <i>09-27-2016</i>	81.46	14.90	3.25	0.40	0.00	0.00
3 Months Ago <i>07-05-2016</i>	-	-	-	-	-	-
Start of Calendar Year <i>12-29-2015</i>	91.53	8.47	0.00	0.00	0.00	0.00
Start of Water Year <i>09-27-2016</i>	81.46	14.90	3.25	0.40	0.00	0.00
One Year Ago <i>10-06-2015</i>	44.65	26.09	15.97	8.11	5.19	0.00

Intensity:

- D0 Abnormally Dry
- D1 Moderate Drought
- D2 Severe Drought
- D3 Extreme Drought
- D4 Exceptional Drought

The Drought Monitor focuses on broad-scale conditions. Local conditions may vary. See accompanying text summary for forecast statements.

Author:
 Brian Fuchs
 National Drought Mitigation Center

