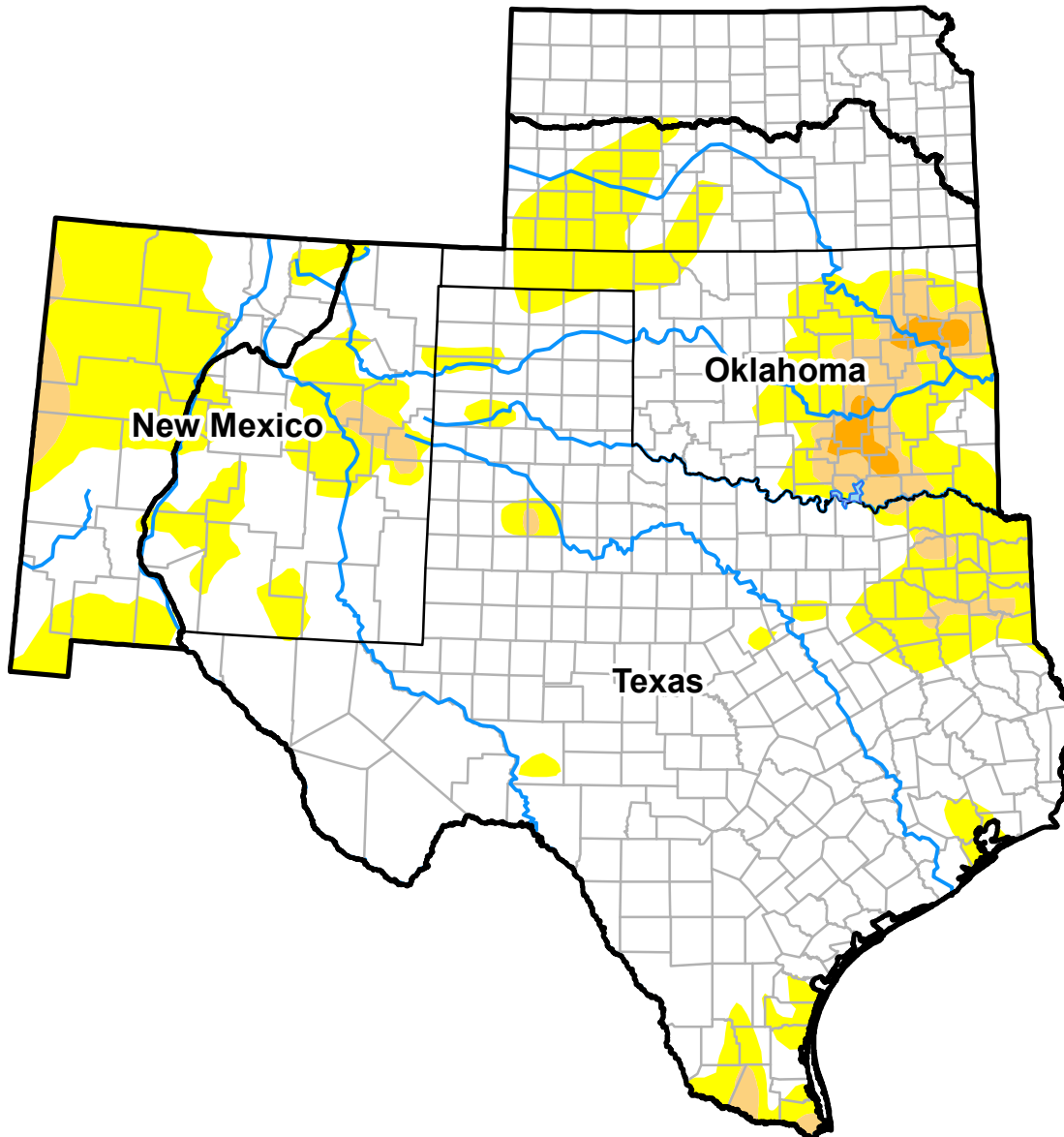







U.S. Drought Monitor

Southern Plains RDEWS

October 4, 2016
(Released Thursday, Oct. 6, 2016)
Valid 8 a.m. EDT



Intensity:

-  D0 Abnormally Dry
-  D1 Moderate Drought
-  D2 Severe Drought
-  D3 Extreme Drought
-  D4 Exceptional Drought

The Drought Monitor focuses on broad-scale conditions. Local conditions may vary. See accompanying text summary for forecast statements.

Author:

Brian Fuchs
National Drought Mitigation Center



<http://droughtmonitor.unl.edu/>