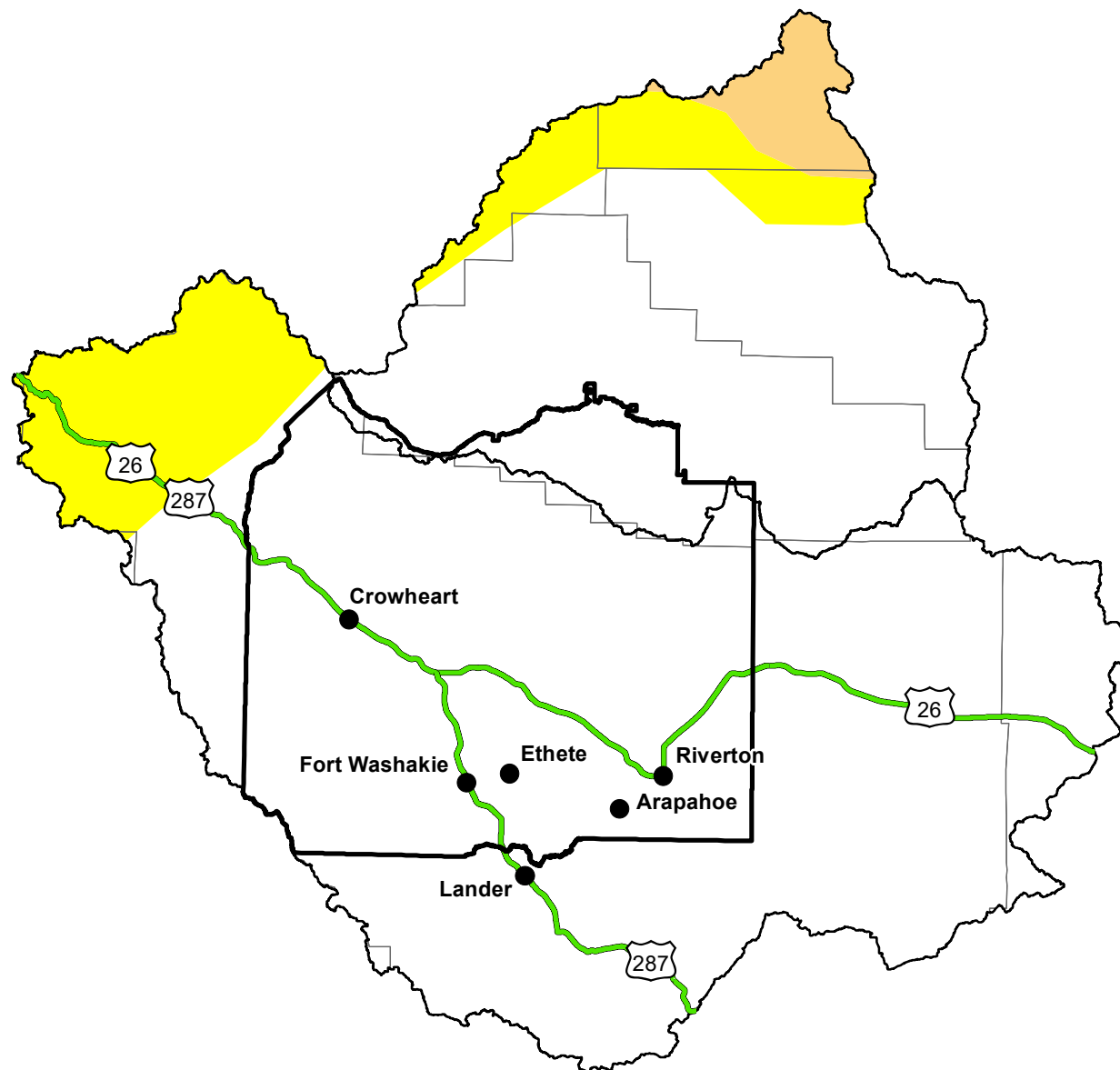


# U.S. Drought Monitor

## Wind River and Surrounding Area

October 4, 2016  
(Released Thursday, Oct. 6, 2016)  
Valid 8 a.m. EDT



### Intensity:

- D0 Abnormally Dry
- D1 Moderate Drought
- D2 Severe Drought
- D3 Extreme Drought
- D4 Exceptional Drought

*The Drought Monitor focuses on broad-scale conditions. Local conditions may vary. For more information on the Drought Monitor, go to <https://droughtmonitor.unl.edu/About.aspx>*

### Author:

Brian Fuchs  
National Drought Mitigation Center



<http://droughtmonitor.unl.edu/>