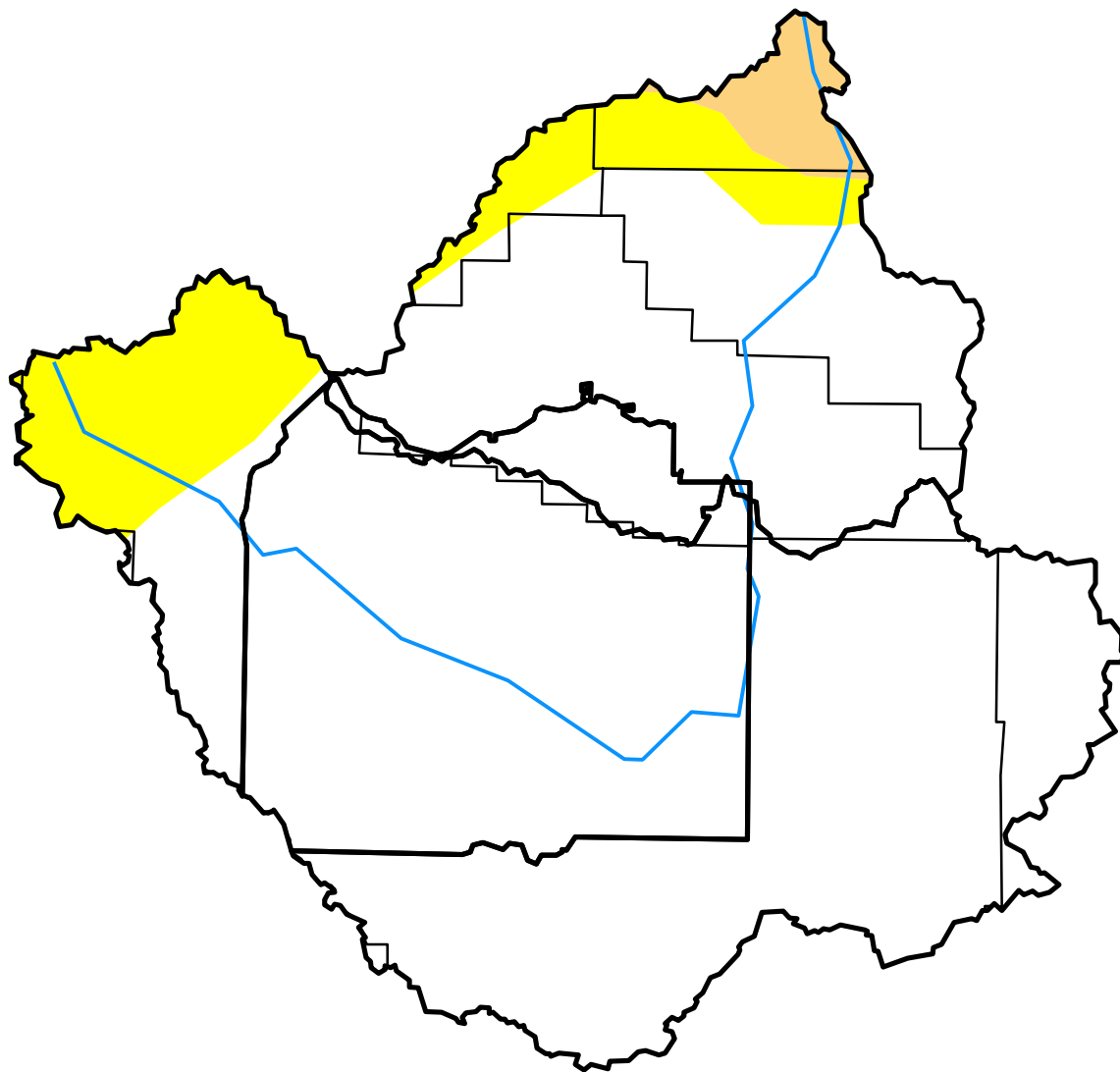


U.S. Drought Monitor

Wind River and Surrounding Area

October 4, 2016
 (Released Thursday, Oct. 6, 2016)
 Valid 8 a.m. EDT



Drought Conditions (Percent Area)

	None	D0-D4	D1-D4	D2-D4	D3-D4	D4
Current	86.91	13.09	2.19	0.00	0.00	0.00
Last Week <i>09-27-2016</i>	81.20	18.80	2.19	0.00	0.00	0.00
3 Months Ago <i>07-05-2016</i>	96.86	3.14	0.42	0.00	0.00	0.00
Start of Calendar Year <i>12-29-2015</i>	53.84	46.16	0.00	0.00	0.00	0.00
Start of Water Year <i>09-27-2016</i>	81.20	18.80	2.19	0.00	0.00	0.00
One Year Ago <i>10-06-2015</i>	74.99	25.01	0.00	0.00	0.00	0.00

Intensity:

- D0 Abnormally Dry
- D1 Moderate Drought
- D2 Severe Drought
- D3 Extreme Drought
- D4 Exceptional Drought

The Drought Monitor focuses on broad-scale conditions. Local conditions may vary. See accompanying text summary for forecast statements.

Author:

Brian Fuchs
 National Drought Mitigation Center

