

U.S. Drought Monitor

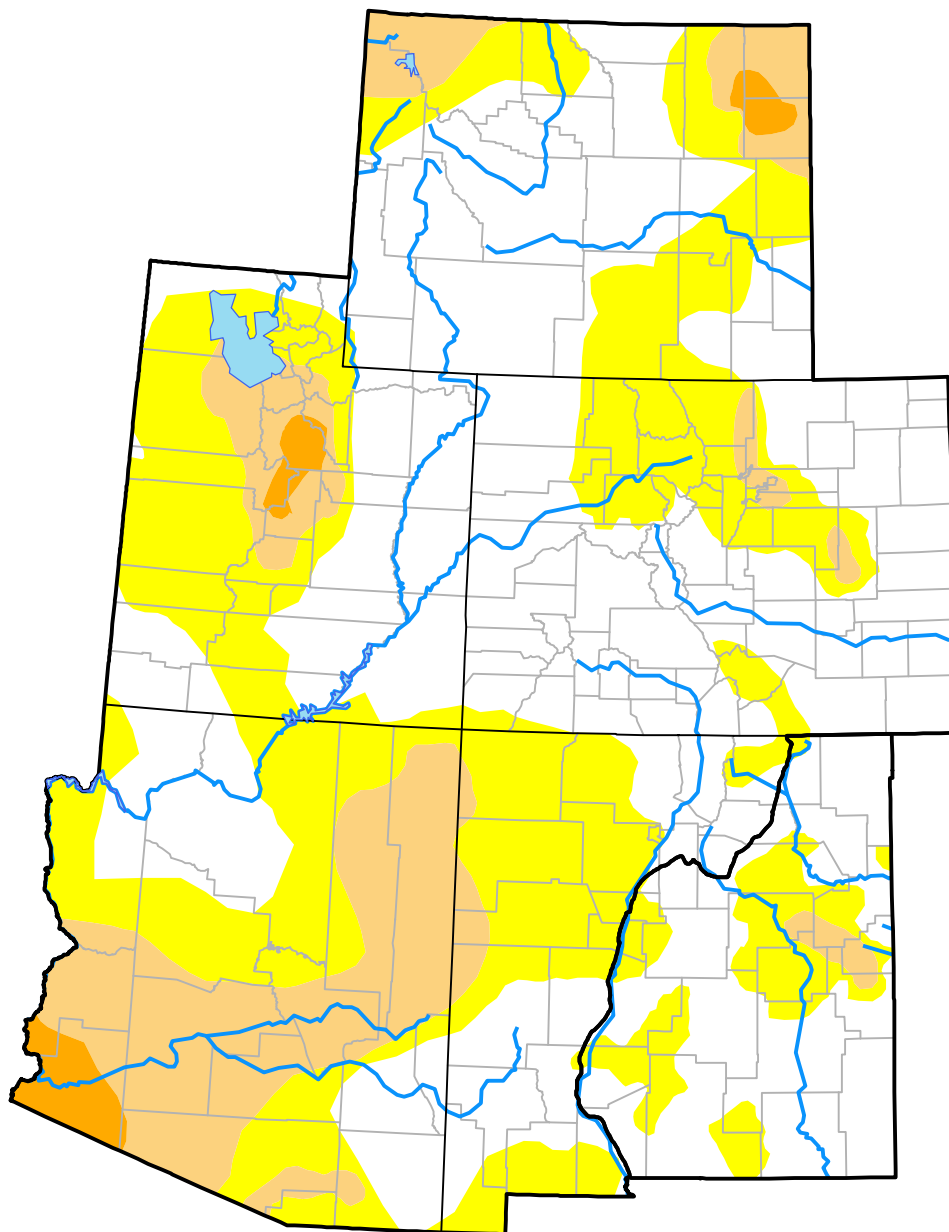
Intermountain West RDEWS

October 11, 2016
(Released Thursday, Oct. 13, 2016)

Valid 8 a.m. EDT

Drought Conditions (Percent Area)

	None	D0-D4	D1-D4	D2-D4	D3-D4	D4
Current	51.84	48.16	15.83	1.63	0.00	0.00
Last Week <i>10-06-2016</i>	49.70	50.30	17.14	2.56	0.00	0.00
3 Months Ago <i>07-14-2016</i>	44.71	55.29	19.01	2.64	0.15	0.00
Start of Calendar Year <i>12-31-2015</i>	49.11	50.89	15.99	3.91	0.00	0.00
Start of Water Year <i>09-29-2016</i>	42.41	57.59	18.03	3.17	0.00	0.00
One Year Ago <i>10-15-2015</i>	43.17	56.83	25.53	5.07	0.00	0.00



Intensity:



The Drought Monitor focuses on broad-scale conditions. Local conditions may vary. For more information on the Drought Monitor, go to <https://droughtmonitor.unl.edu/About.aspx>

Author:

Brian Fuchs
 National Drought Mitigation Center



droughtmonitor.unl.edu