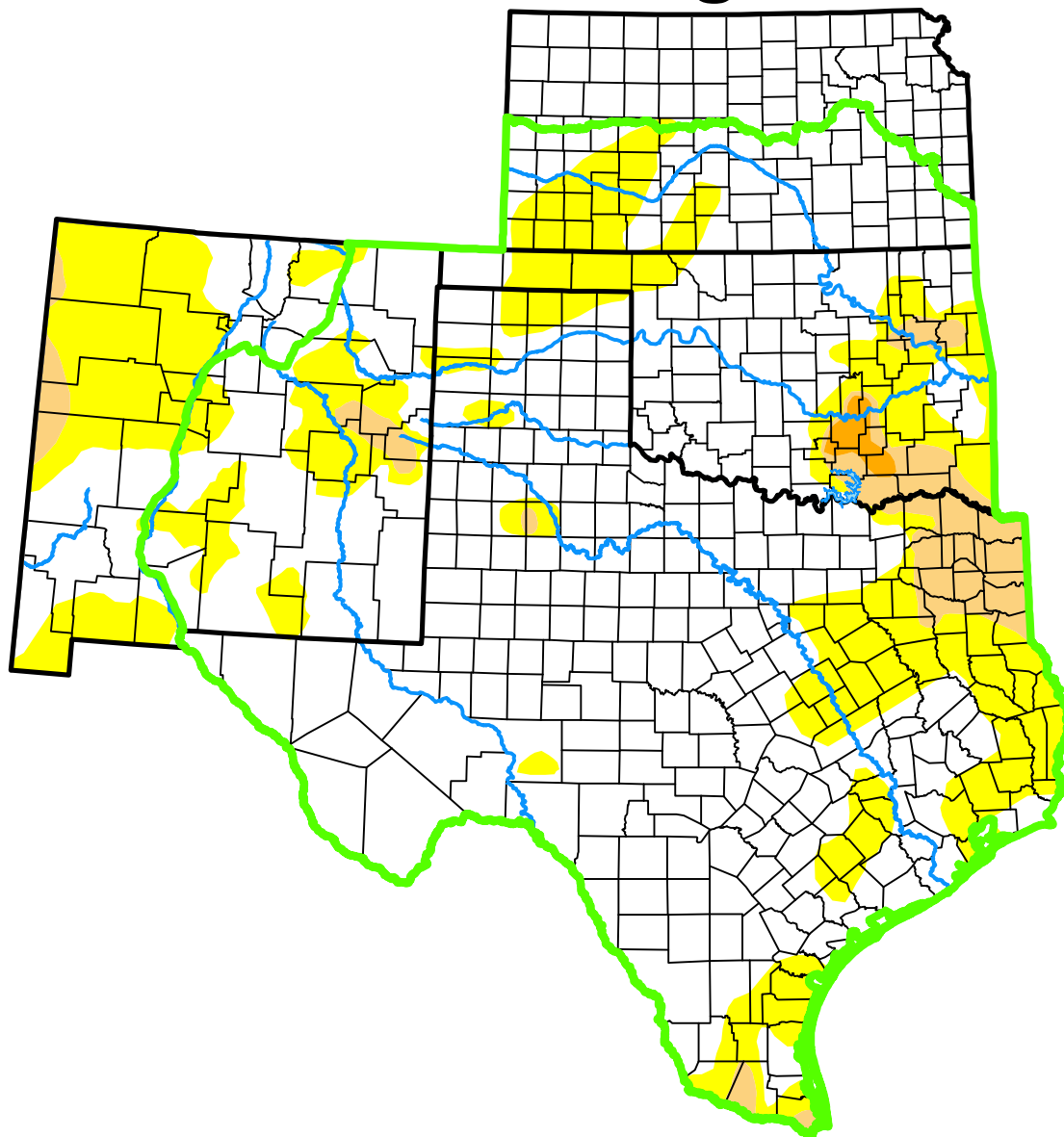


U.S. Drought Monitor

Southern Plains DEWS

and Surrounding Areas



October 11, 2016

(Released Thursday, Oct. 13, 2016)

Valid 8 a.m. EDT

Drought Conditions (Percent Area)

	None	D0-D4	D1-D4	D2-D4	D3-D4	D4
Current	73.73	26.27	5.06	0.47	0.00	0.00
Last Week <i>10-04-2016</i>	77.27	22.73	4.50	0.82	0.00	0.00
3 Months Ago <i>07-12-2016</i>	81.16	18.84	1.17	0.00	0.00	0.00
Start of Calendar Year <i>12-29-2015</i>	96.54	3.46	0.00	0.00	0.00	0.00
Start of Water Year <i>09-27-2016</i>	85.87	14.13	3.85	0.48	0.00	0.00
One Year Ago <i>10-13-2015</i>	47.79	52.21	32.90	22.10	8.91	0.85

(Statistics for area highlighted in green)

Intensity:

None	D2 Severe Drought
D0 Abnormally Dry	D3 Extreme Drought
D1 Moderate Drought	D4 Exceptional Drought

The Drought Monitor focuses on broad-scale conditions. Local conditions may vary. For more information on the Drought Monitor, go to <https://droughtmonitor.unl.edu/About.aspx>

Author:

Brian Fuchs
National Drought Mitigation Center



droughtmonitor.unl.edu