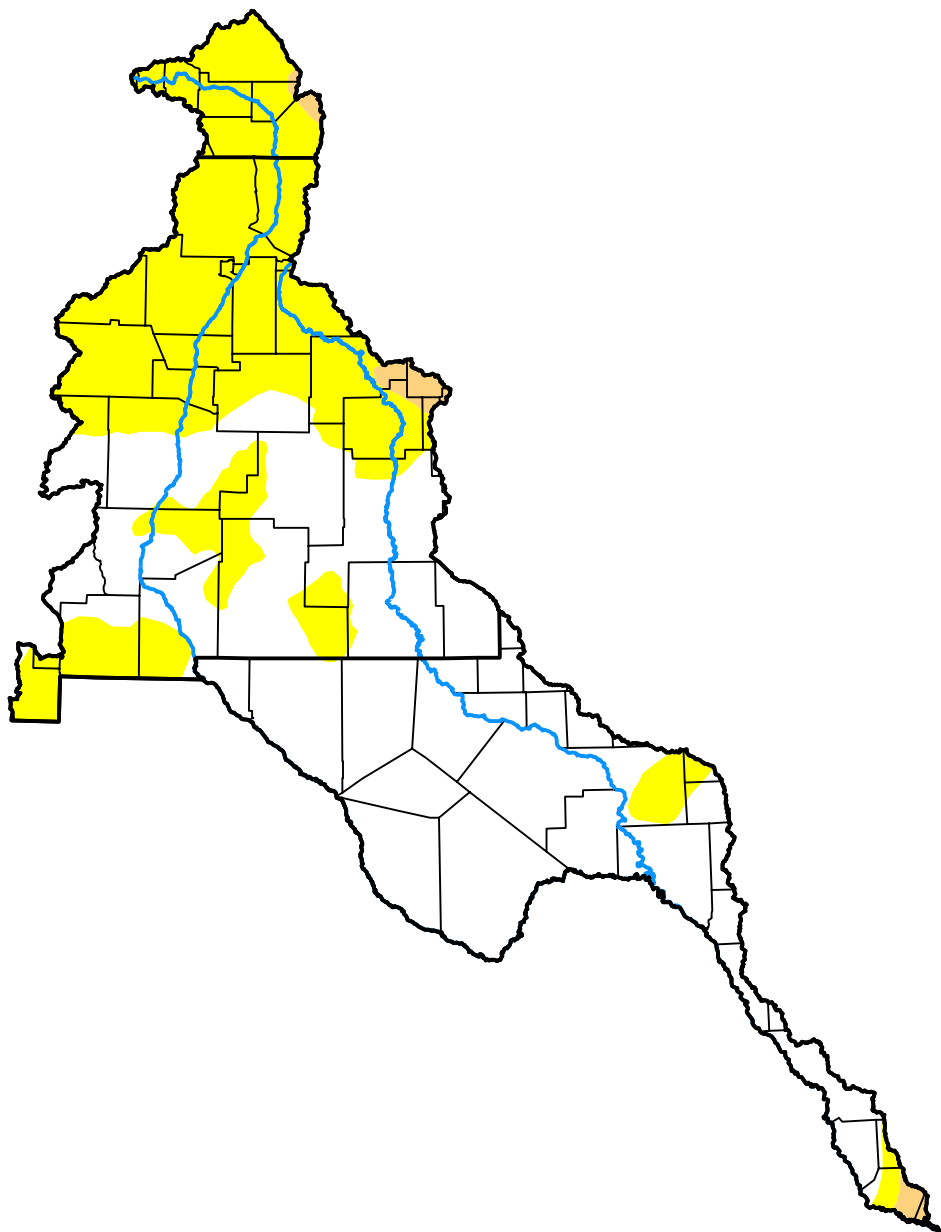


U.S. Drought Monitor

Rio Grande Watershed

November 8, 2016
 (Released Thursday, Nov. 10, 2016)

Valid 7 a.m. EST



Drought Conditions (Percent Area)

	None	D0-D4	D1-D4	D2-D4	D3-D4	D4
Current	60.27	39.73	1.49	0.00	0.00	0.00
Last Week <i>11-03-2016</i>	59.09	40.91	1.24	0.00	0.00	0.00
3 Months Ago <i>08-11-2016</i>	33.40	66.60	15.03	0.00	0.00	0.00
Start of Calendar Year <i>12-31-2015</i>	85.78	14.22	0.00	0.00	0.00	0.00
Start of Water Year <i>09-29-2016</i>	75.04	24.96	0.86	0.00	0.00	0.00
One Year Ago <i>11-12-2015</i>	83.73	16.27	0.06	0.00	0.00	0.00

Intensity:

- None
- D0 Abnormally Dry
- D1 Moderate Drought
- D2 Severe Drought
- D3 Extreme Drought
- D4 Exceptional Drought

The Drought Monitor focuses on broad-scale conditions. Local conditions may vary. For more information on the Drought Monitor, go to <https://droughtmonitor.unl.edu/About.aspx>

Author:

Deborah Bathke
 National Drought Mitigation Center



droughtmonitor.unl.edu