

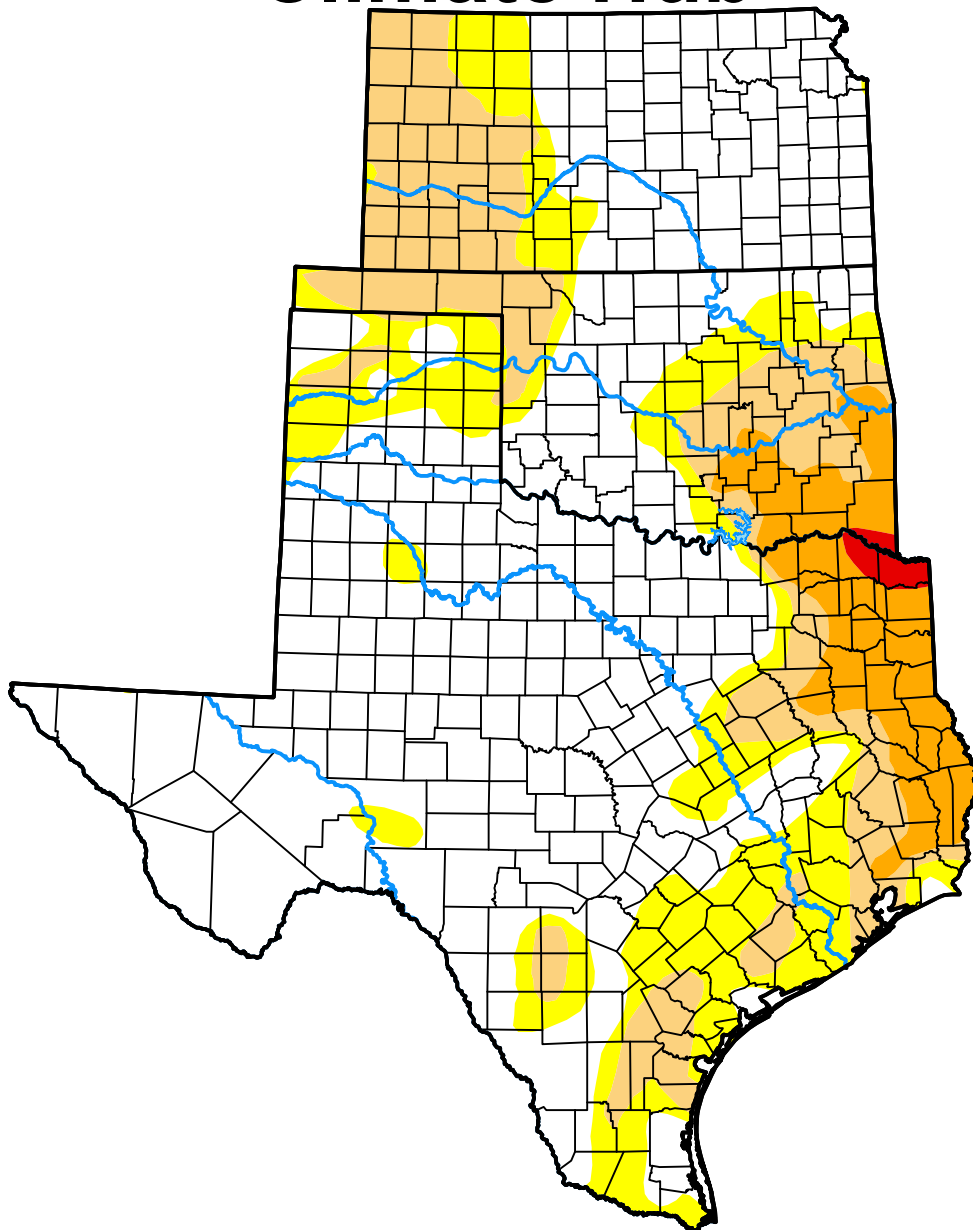
U.S. Drought Monitor

USDA Southern Plains Climate Hub

November 15, 2016
 (Released Thursday, Nov. 17, 2016)
 Valid 7 a.m. EST

Drought Conditions (Percent Area)

	None	D0-D4	D1-D4	D2-D4	D3-D4	D4
Current	60.01	39.99	23.00	7.33	0.51	0.00
Last Week <i>11-08-2016</i>	60.94	39.06	17.43	5.17	0.00	0.00
3 Months Ago <i>08-16-2016</i>	73.03	26.97	4.77	0.50	0.00	0.00
Start of Calendar Year <i>12-29-2015</i>	96.70	3.30	0.00	0.00	0.00	0.00
Start of Water Year <i>09-27-2016</i>	89.65	10.35	3.58	0.51	0.00	0.00
One Year Ago <i>11-17-2015</i>	75.01	24.99	5.51	0.00	0.00	0.00



Intensity:

- None
- D0 Abnormally Dry
- D1 Moderate Drought
- D2 Severe Drought
- D3 Extreme Drought
- D4 Exceptional Drought

The Drought Monitor focuses on broad-scale conditions. Local conditions may vary. For more information on the Drought Monitor, go to <https://droughtmonitor.unl.edu/About.aspx>

Author:

Richard Heim
 NCEI/NOAA

