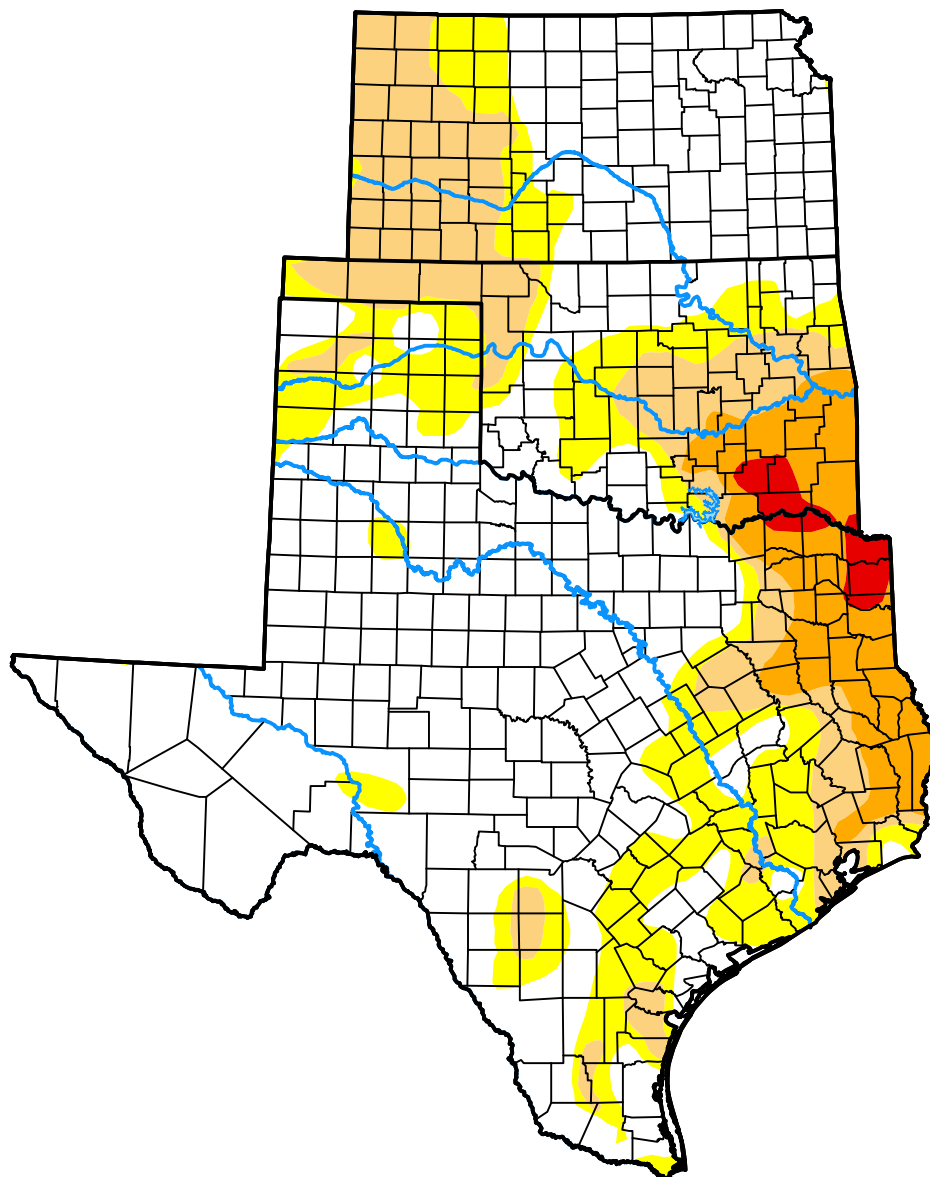


U.S. Drought Monitor
**USDA Southern Plains
Climate Hub**

November 22, 2016
(Released Wednesday, Nov. 23, 2016)
Valid 7 a.m. EST



Intensity:



The Drought Monitor focuses on broad-scale conditions. Local conditions may vary. For more information on the Drought Monitor, go to <https://droughtmonitor.unl.edu/About.aspx>

Author:

Richard Heim
NCEI/NOAA



droughtmonitor.unl.edu