

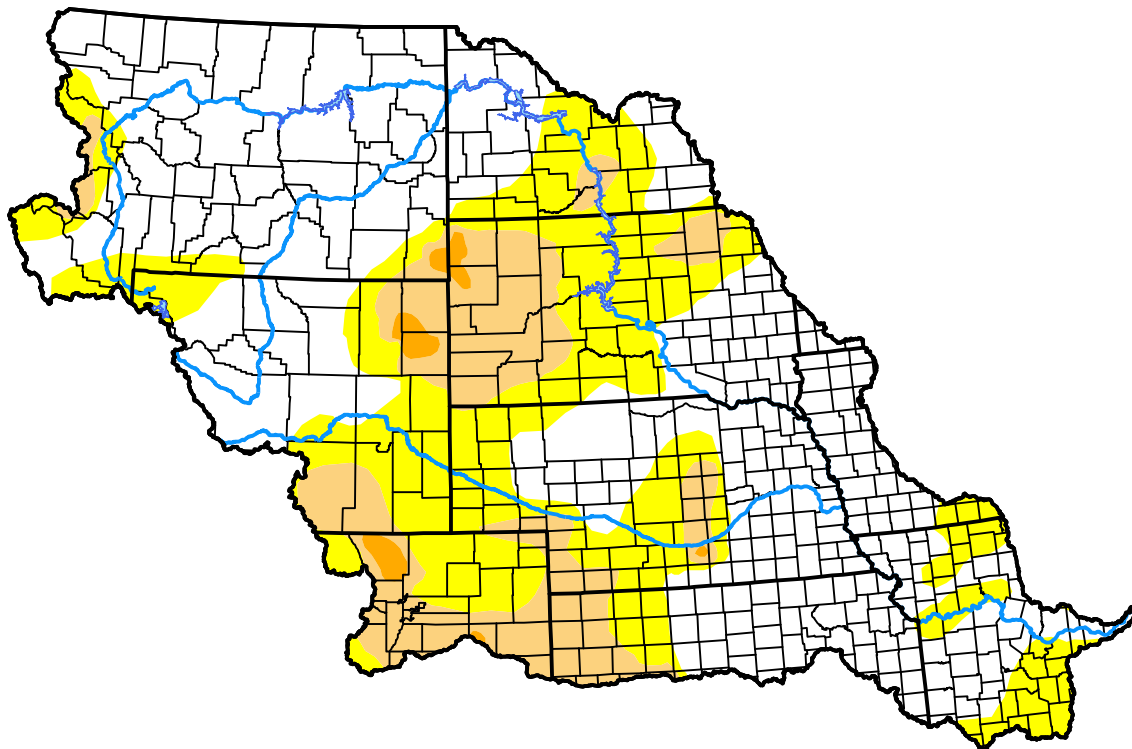
# U.S. Drought Monitor

## Missouri Watershed

**November 22, 2016**  
 (Released Wednesday, Nov. 23, 2016)  
 Valid 7 a.m. EST

### Drought Conditions (Percent Area)

	None	D0	D1	D2	D3	D4
<b>Current</b>	56.40	28.58	14.03	0.99	0.00	0.00
<b>Last Week</b> <i>11-17-2016</i>	60.74	24.63	13.64	0.99	0.00	0.00
<b>3 Months Ago</b> <i>08-25-2016</i>	56.87	27.48	10.51	4.32	0.82	0.00
<b>Start of Calendar Year</b> <i>12-31-2015</i>	76.59	18.01	4.27	1.14	0.00	0.00
<b>Start of Water Year</b> <i>09-29-2016</i>	68.17	19.59	8.59	3.39	0.26	0.00
<b>One Year Ago</b> <i>11-25-2015</i>	66.00	27.36	4.19	2.45	0.00	0.00



### Intensity:



The Drought Monitor focuses on broad-scale conditions. Local conditions may vary. For more information on the Drought Monitor, go to <https://droughtmonitor.unl.edu/About.aspx>

### Author:

Richard Heim  
 NCEI/NOAA



[droughtmonitor.unl.edu](https://droughtmonitor.unl.edu)