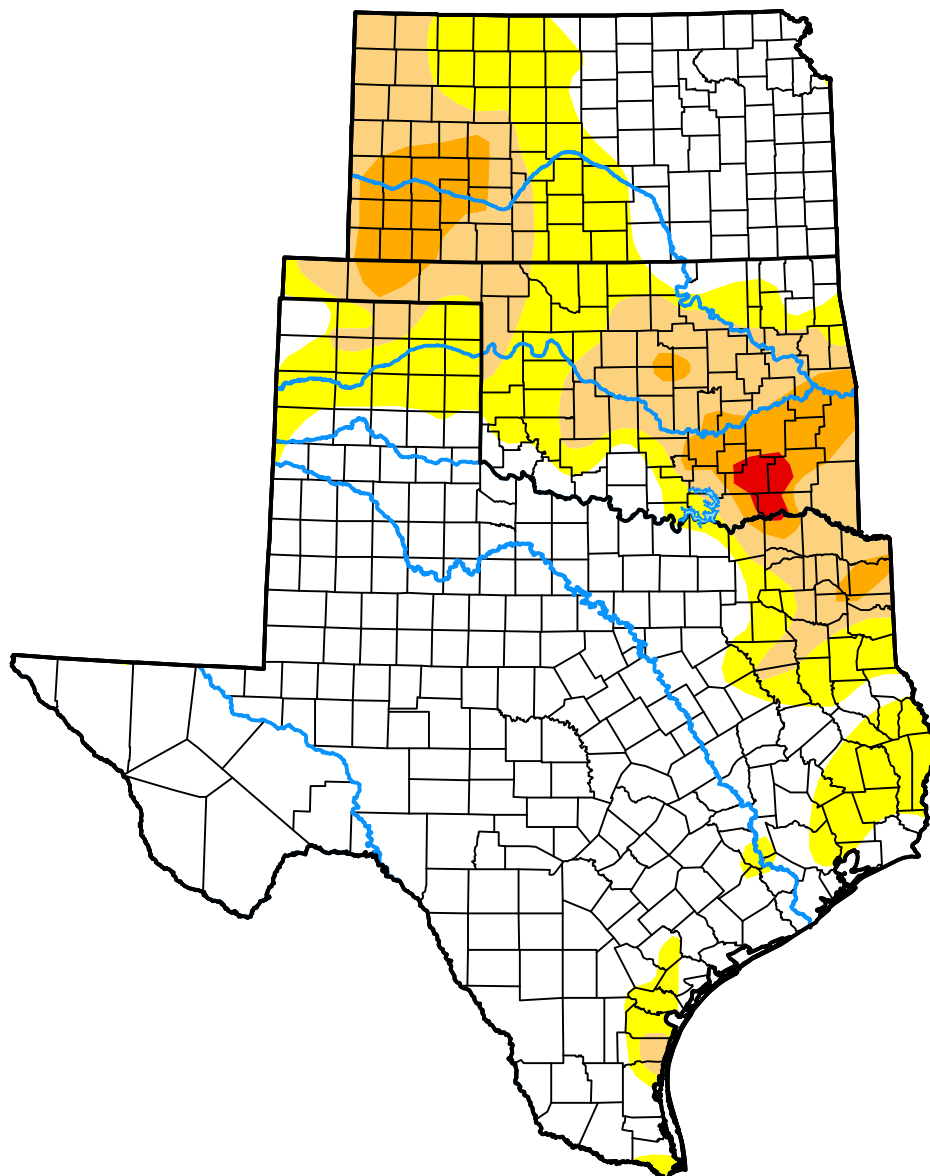


*U.S. Drought Monitor*  
**USDA Southern Plains  
Climate Hub**

**December 6, 2016**  
*(Released Thursday, Dec. 8, 2016)*  
Valid 7 a.m. EST



*Intensity:*

-  None
-  D0 Abnormally Dry
-  D1 Moderate Drought
-  D2 Severe Drought
-  D3 Extreme Drought
-  D4 Exceptional Drought

*The Drought Monitor focuses on broad-scale conditions. Local conditions may vary. For more information on the Drought Monitor, go to <https://droughtmonitor.unl.edu/About.aspx>*

*Author:*

Anthony Artusa  
NOAA/NWS/NCEP/CPC



**droughtmonitor.unl.edu**