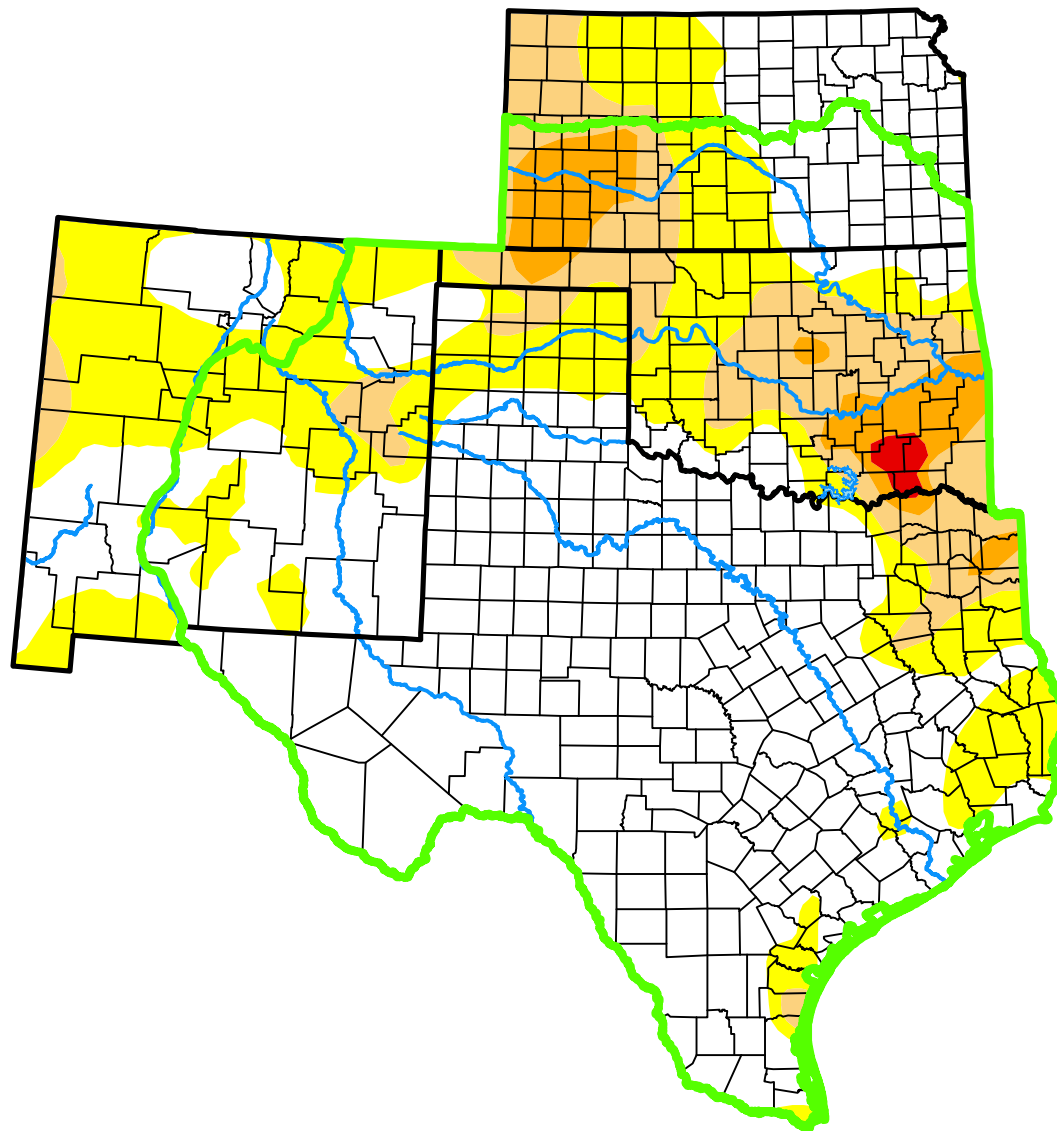








U.S. Drought Monitor

Southern Plains DEWS and Surrounding Areas

December 6, 2016
(Released Thursday, Dec. 8, 2016)
Valid 7 a.m. EST



Intensity:

-  None
-  D0 Abnormally Dry
-  D1 Moderate Drought
-  D2 Severe Drought
-  D3 Extreme Drought
-  D4 Exceptional Drought

The Drought Monitor focuses on broad-scale conditions. Local conditions may vary. For more information on the Drought Monitor, go to <https://droughtmonitor.unl.edu/About.aspx>

Author:

Anthony Artusa
NOAA/NWS/NCEP/CPC



droughtmonitor.unl.edu