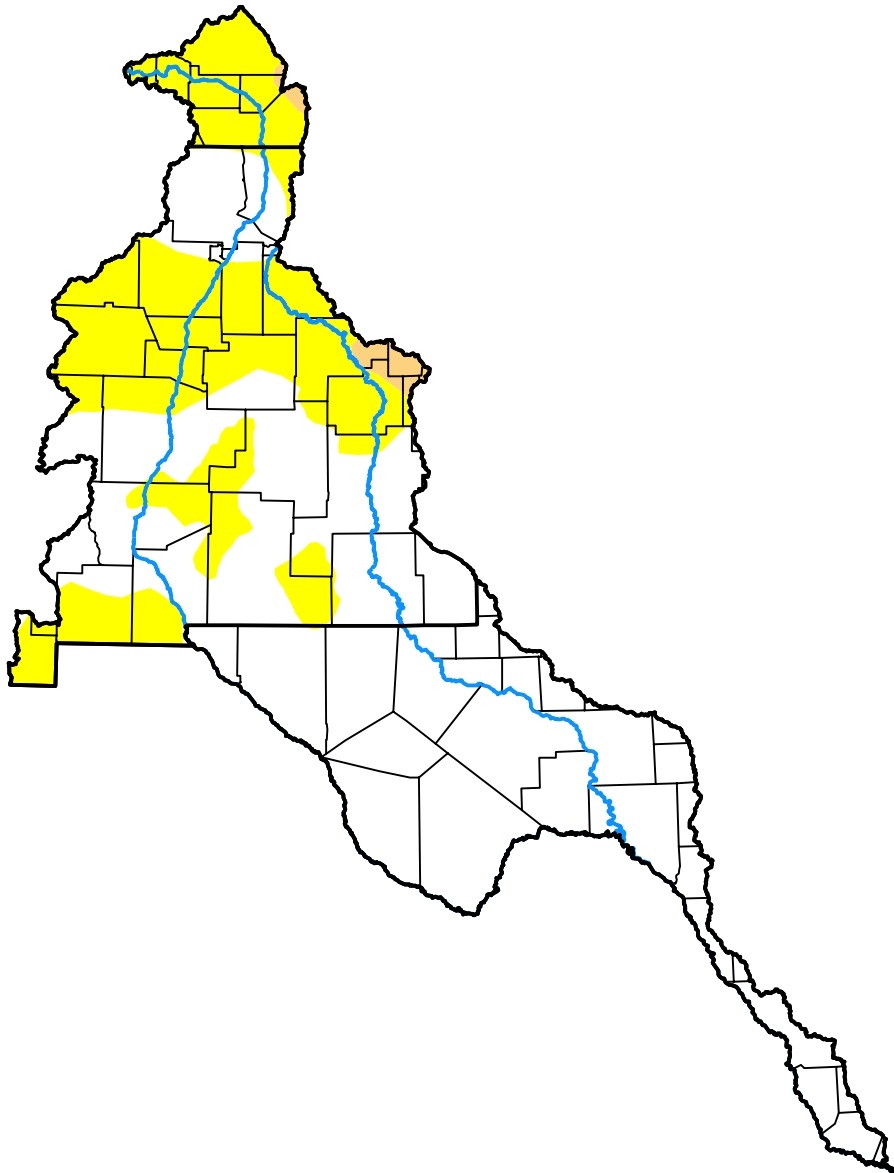
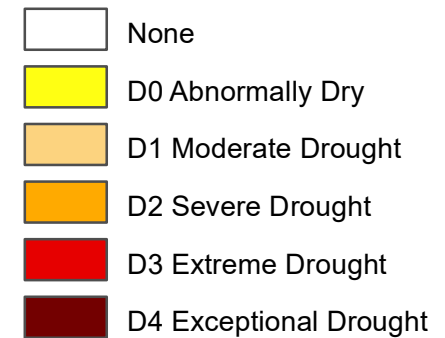


# U.S. Drought Monitor Rio Grande Watershed

**December 13, 2016**  
(Released Thursday, Dec. 15, 2016)  
Valid 7 a.m. EST



## Intensity:



*The Drought Monitor focuses on broad-scale conditions. Local conditions may vary. For more information on the Drought Monitor, go to <https://droughtmonitor.unl.edu/About.aspx>*

## Author:

Anthony Artusa  
NOAA/NWS/NCEP/CPC



**droughtmonitor.unl.edu**