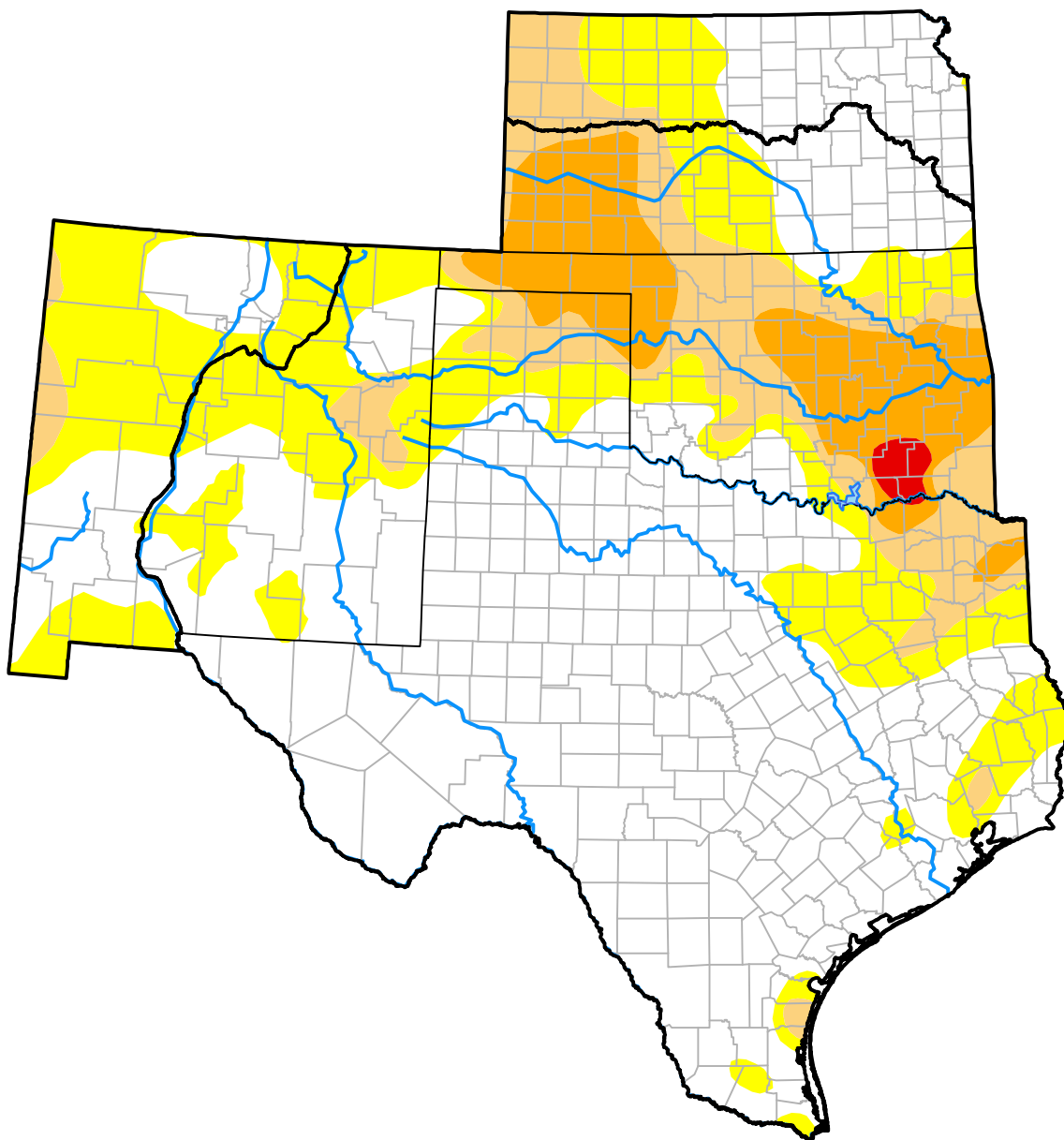


# U.S. Drought Monitor

## Southern Plains RDEWS

**December 20, 2016**  
*(Released Thursday, Dec. 22, 2016)*  
 Valid 7 a.m. EST



*Drought Conditions (Percent Area)*

	None	D0	D1	D2	D3	D4
<b>Current</b>	60.25	22.91	9.22	7.12	0.50	0.00
<b>Last Week</b> <i>12-15-2016</i>	61.19	22.14	9.96	6.20	0.50	0.00
<b>3 Months Ago</b> <i>09-22-2016</i>	78.06	18.34	3.16	0.44	0.00	0.00
<b>Start of Calendar Year</b> <i>12-31-2015</i>	90.39	9.61	0.00	0.00	0.00	0.00
<b>Start of Water Year</b> <i>09-29-2016</i>	78.11	17.59	3.83	0.47	0.00	0.00
<b>One Year Ago</b> <i>12-24-2015</i>	90.73	9.27	0.00	0.00	0.00	0.00

### Intensity:

None	D2 Severe Drought
D0 Abnormally Dry	D3 Extreme Drought
D1 Moderate Drought	D4 Exceptional Drought

*The Drought Monitor focuses on broad-scale conditions. Local conditions may vary. For more information on the Drought Monitor, go to <https://droughtmonitor.unl.edu/About.aspx>*

### Author:

Brad Rippey  
 U.S. Department of Agriculture



**droughtmonitor.unl.edu**