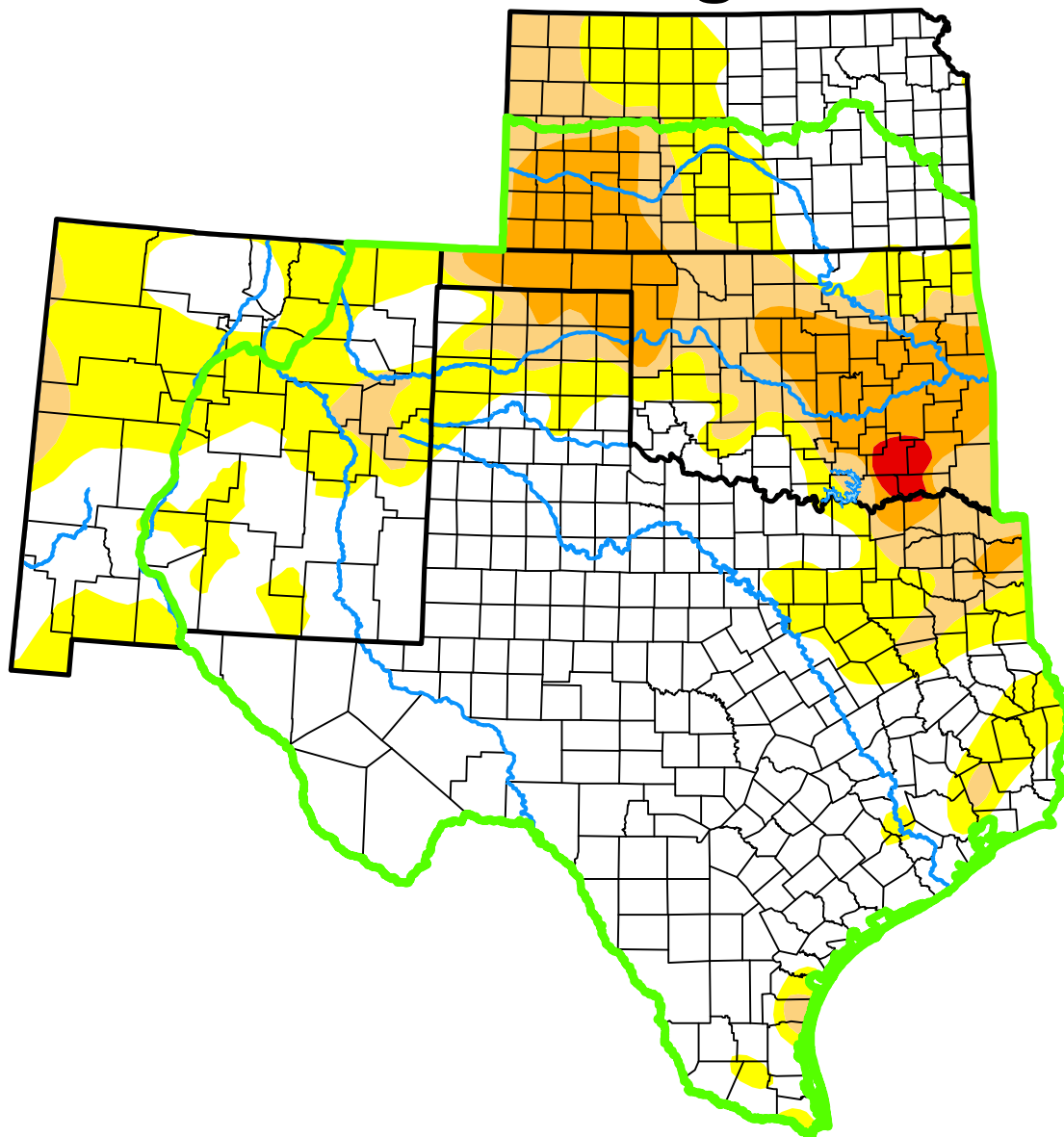


U.S. Drought Monitor

Southern Plains DEWS and Surrounding Areas



December 20, 2016
(Released Thursday, Dec. 22, 2016)
Valid 7 a.m. EST

Drought Conditions (Percent Area)

	None	D0	D1	D2	D3	D4
Current	61.00	18.15	10.39	9.93	0.52	0.00
Last Week <i>12-13-2016</i>	62.00	17.34	11.17	8.97	0.52	0.00
3 Months Ago <i>09-20-2016</i>	85.82	11.07	2.67	0.45	0.00	0.00
Start of Calendar Year <i>12-29-2015</i>	96.54	3.46	0.00	0.00	0.00	0.00
Start of Water Year <i>09-27-2016</i>	85.87	10.28	3.37	0.48	0.00	0.00
One Year Ago <i>12-22-2015</i>	96.46	3.54	0.00	0.00	0.00	0.00

(Statistics for area highlighted in green)

Intensity:

None	D2 Severe Drought
D0 Abnormally Dry	D3 Extreme Drought
D1 Moderate Drought	D4 Exceptional Drought

The Drought Monitor focuses on broad-scale conditions. Local conditions may vary. For more information on the Drought Monitor, go to <https://droughtmonitor.unl.edu/About.aspx>

Author:

Brad Rippey
U.S. Department of Agriculture



droughtmonitor.unl.edu